

State University of New York at Oswego

Program Study – Penfield Library Renovations

September 18, 2009

S A S A K I

V.I.P. Structures
ARCHITECTS WHO BUILD

Our Team

1

Introduction

2

Team and Process

Your Project / Our Approach

3

Library Issues and Opportunities

4

Thoughts and Observations on
the Penfield Library

Questions and Answers

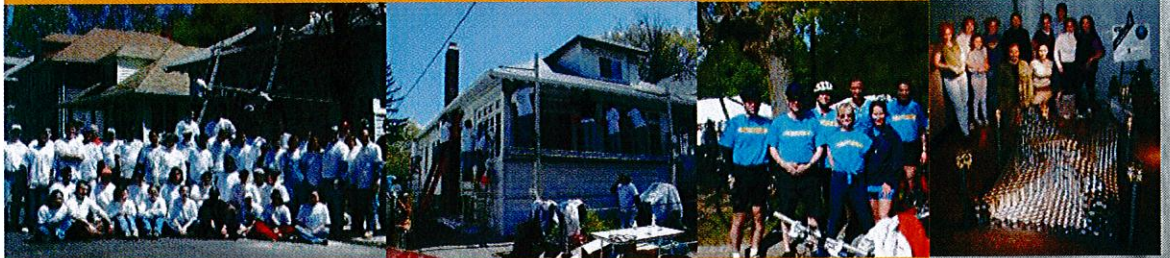
Our Team

- 1 Introduction
- 2 Team and Process

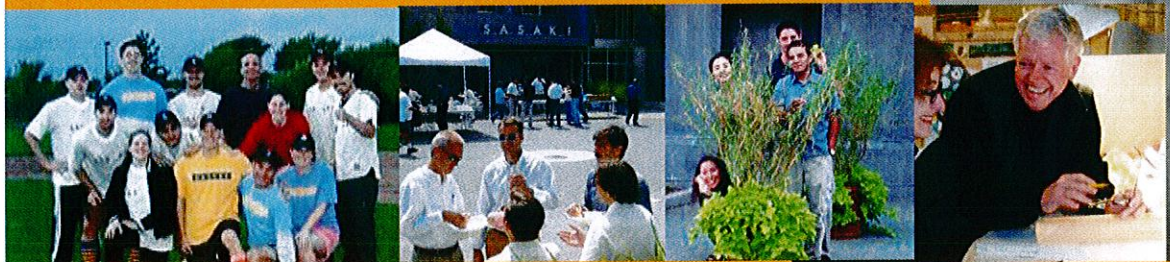
COLLABORATION



COMMUNITY



SPIRIT



Sustainable Design

SASAKI
GREEN LAB

stewardship

PAYING TRIBUTE TO THE CHARLES RIVER

Sasaki has developed an Exterior Site Management and Restoration Plan to protect and restore land along the Charles River owned by the Massachusetts Department of Conservation and Recreation. The plan includes four components: inventory and mapping, priority and goal setting, action, and monitoring. The general goals of the plan are to keep this area free of debris and trash, reduce invasive plants, and establish native plantings in the area.



How we are being inspired by the Charles River landscape



Charles River - View from the Riverfront

CHARLES RIVER WATERFRONT PLANTS

INVASIVE
 Norway Maple *Acer platanoides*
 Tree of Heaven *Ailanthus altissima*
 Dutch Elm *Ulmus glabra*
 Multiflora Rose *Rosa multiflora*
 Japanese Knotweed *Polygonum japonicum*
 Oriental Bittersweet *Sarcocolla auriculata*
 Buckthorn *Rhamnus typhalo*

NON-INVASIVE
 White Birch *Betula papyrifera*
 Slippery Elm *Ulmus glabra*
 American Elm *Ulmus americana*

RATONAT / ZED
 Red Elder *Aquilegia*
 European Alder *Alnus glutinosa*

The Red Elder is a non-invasive species that is present in the Charles River watershed.

The Alder is a non-invasive species that is present in the Charles River watershed.



The Red Elder is a non-invasive species that is present in the Charles River watershed.

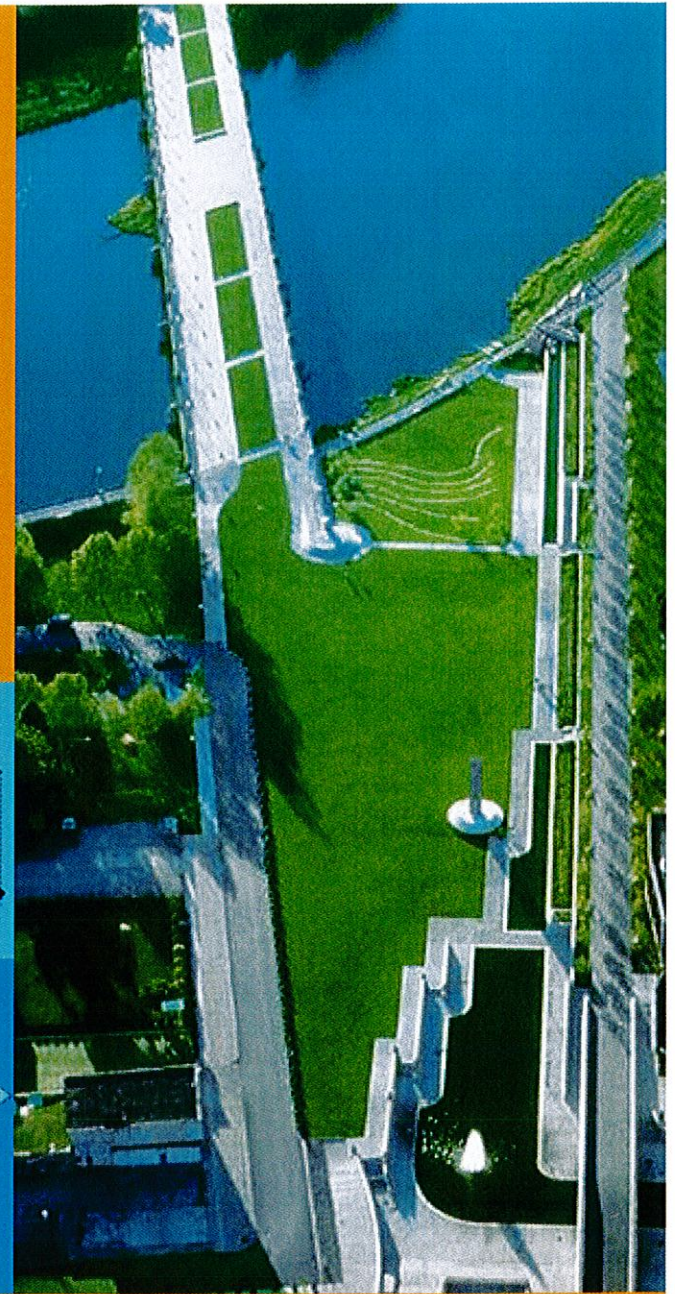
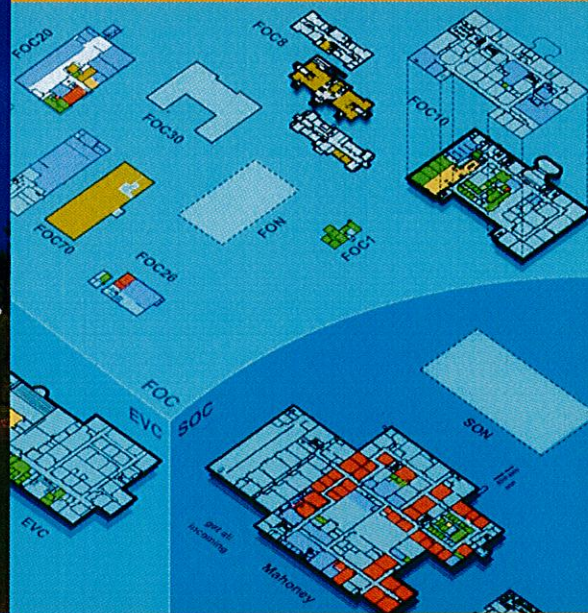


- International Facility Management Association
Award for Best Practices in Sustainability / Existing Building LEED Principles
May 2009
- USGBC
Innovation in Green Design Award
March 2009

LEED EB Gold
Watertown
LEED CI Certified
San Francisco

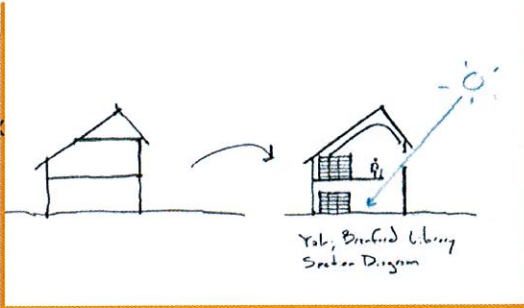
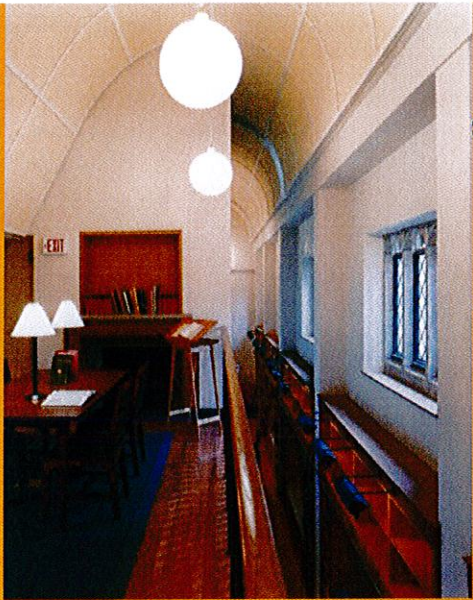
Excellence in Higher Education

- Founder's Award for Distinguished Achievement in Higher Education Planning; Society for College & University Planning 2008
- Honor Award for Excellence in Planning; Society for College & University Planning 2009
- 6 AIA Awards in 2008

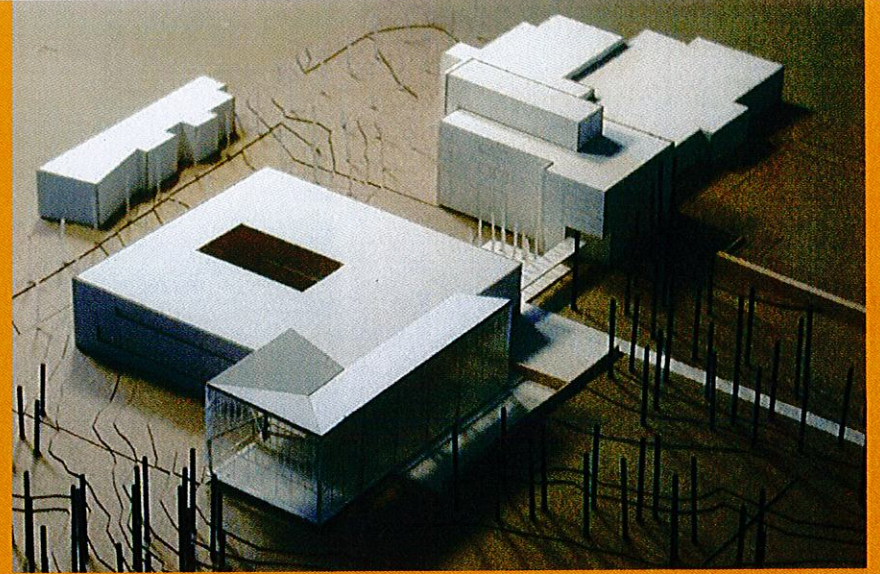


2008 "Best of the Best"
Best Higher Education Building in North America

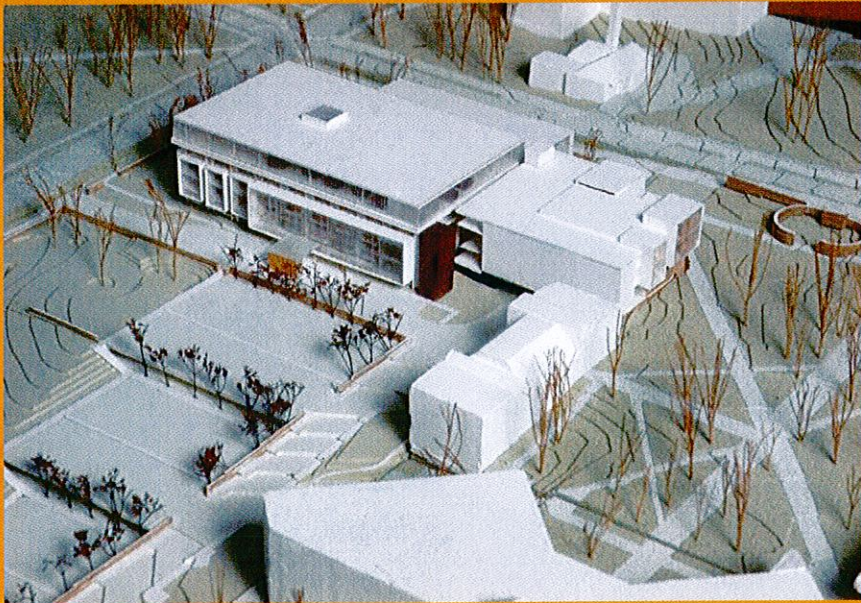
2007 Landscape Architecture
Firm of the Year Award



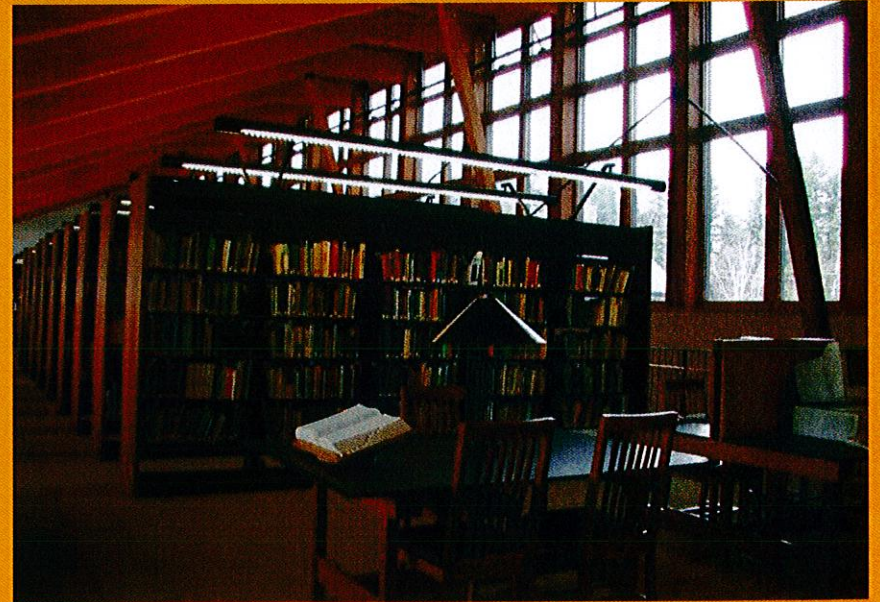
Branford College, Yale University
New Haven, Connecticut



University of New Brunswick
Saint John, New Brunswick



University of Missouri at Kansas City
Kansas City, Missouri



Adirondack Library at Paul Smiths College
Paul Smiths, New York



Missouri State University
Springfield, Missouri



Morgan State University
Baltimore, Maryland



Lorain County Community College
Cleveland, Ohio

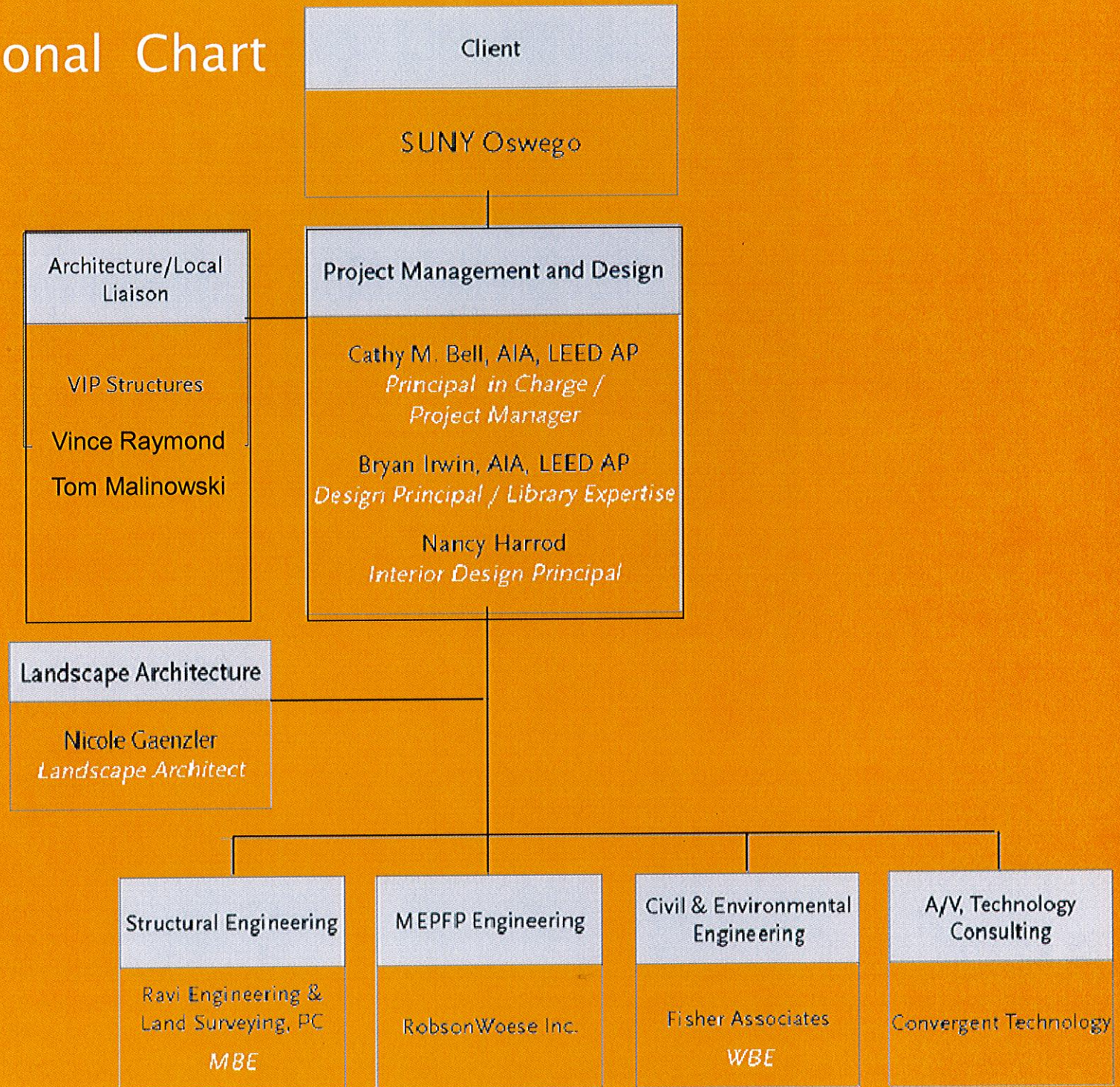


University of Balamand
Khoura Valley, Lebanon

Recent Speaking Engagements

- **International Federation of Library Associations (IFLA), “Designing an Academic Library as a Place and a Space”, Torino, Italy, Summer 2009**
- **Computers in Libraries Conference, “Library Transformation with Robotics”, Washington, D.C. Spring 2009**
- **Canadian Learning Commons Conference; “An Architect’s Perspective...”, Fredericton, NB Spring 2008**
- **American Library Association; “Re-Invented By A Robot”, Los Angeles, CA Spring 2008**
- **North Central SCUP (Society of College and University Planners) Conference; “Planning Hybrid Buildings to Reduce Cost, Build Community, and Improve Learning”, Fall 2006**
- **International SCUP (Society of College and University Planners) Conference; “The Library as a Transformative Community Focus in an Urban University”, Summer 2005**
- **Learning Communities and Collaboration Annual Conference; “Designing Interdisciplinary and Collaborative Environments”, Fall 2004**

Organizational Chart



Penfield Library Study Process

Phase 1 Inventory & Analysis

- Project Initiation
 - Kick-off
 - Establish Protocol
 - Goal Setting
 - Sustainability Overlay
- Refine Program
 - Interviews
 - Focus Groups
 - Space Data Review
 - Confirm Planning Objectives
- Existing Conditions Evaluation
 - Building Assessment
 - Regulatory review
 - Circulation Systems
 - Vehicle · Pedestrian · Service
 - Parking
 - Utilities Issues
 - Campus Image
 - Visual Character
 - Landscape & Open Space
 - Special Conditions

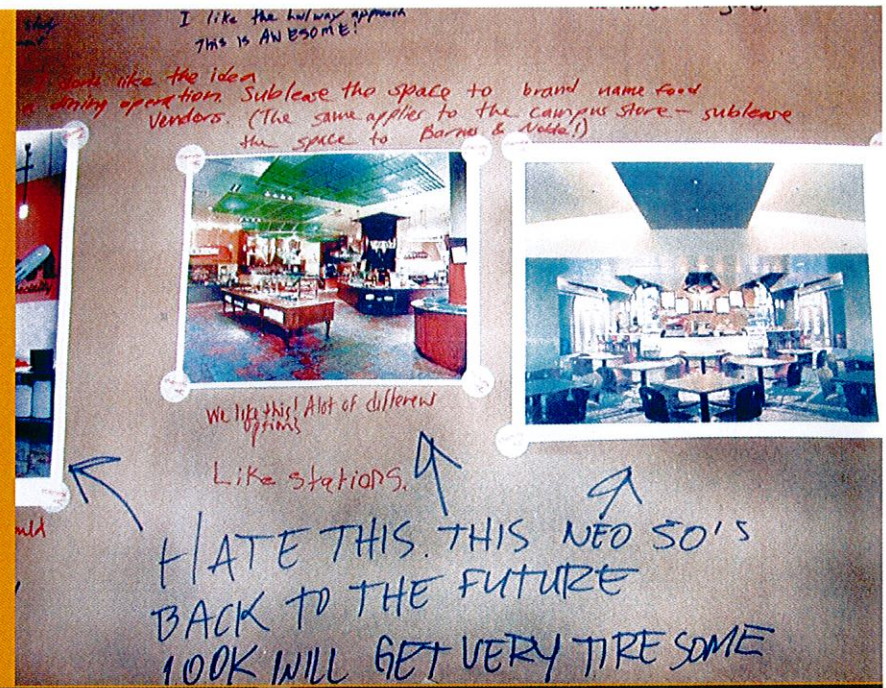
Phase 2 Concept Alternatives

- Program Evaluation
- Test Strategic Concepts for:
 - Program Accommodation
 - Building systems
 - Exterior regeneration
 - Circulation
 - Open Space
 - Design

Phase 3 Synthesis/Concept Development

- Develop Preferred Concept:
 - Exterior Interventions
 - Interior Architecture
 - Finishes
 - Building Systems
 - Sustainability
 - Site Circulation
 - Parking
 - Open Space Organization
 - Utilities
 - Phasing & Costs

Approach/Process



Penfield Library Study Process: Workshops

Phase 1 Inventory & Analysis

2.5 Months

- Interviews with constituencies
- Collection and verification of resource information
- Review of all relevant documents
- Review of preliminary space and facility programs
- Identify site-related limitations and opportunities

Workshop #1
Project Initiation
Reconnaissance

Workshop #2
Program alternatives
Reports on reconnaissance

Phase 2 Concept Alternatives

3 Months

- Progress workshops with key committee
- Review and selection of preferred conceptual alternatives

Workshop #3
Program Development
Early concepts

Workshop #4
Statement of Program
Concept Development with systems, sustainability cost and phasing implications

Phase 3 Synthesis/Concept Development

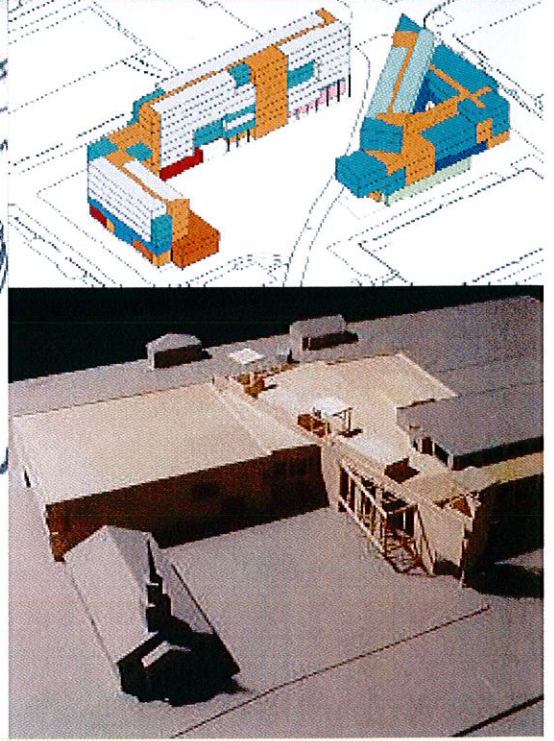
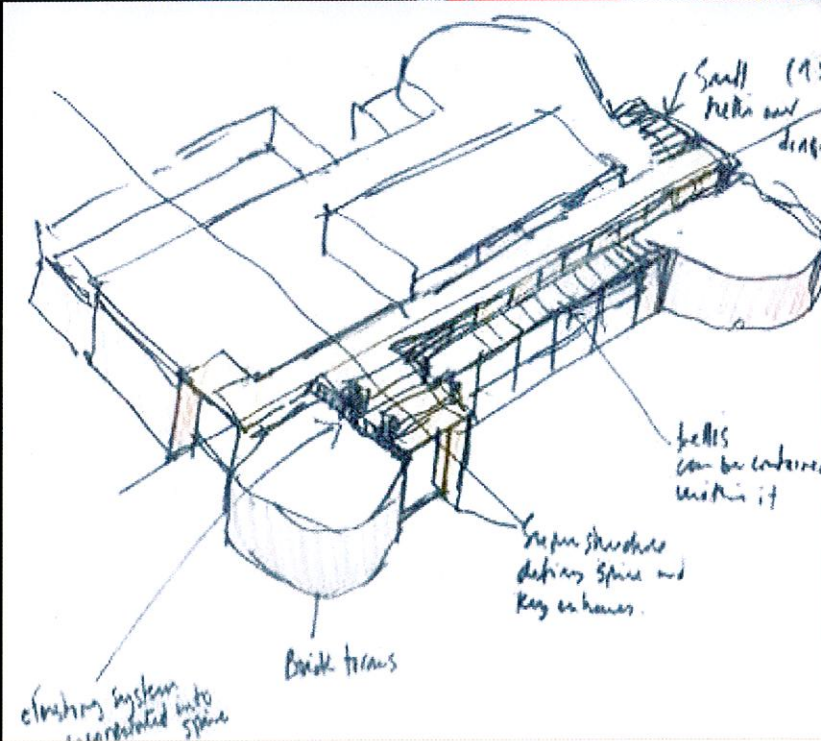
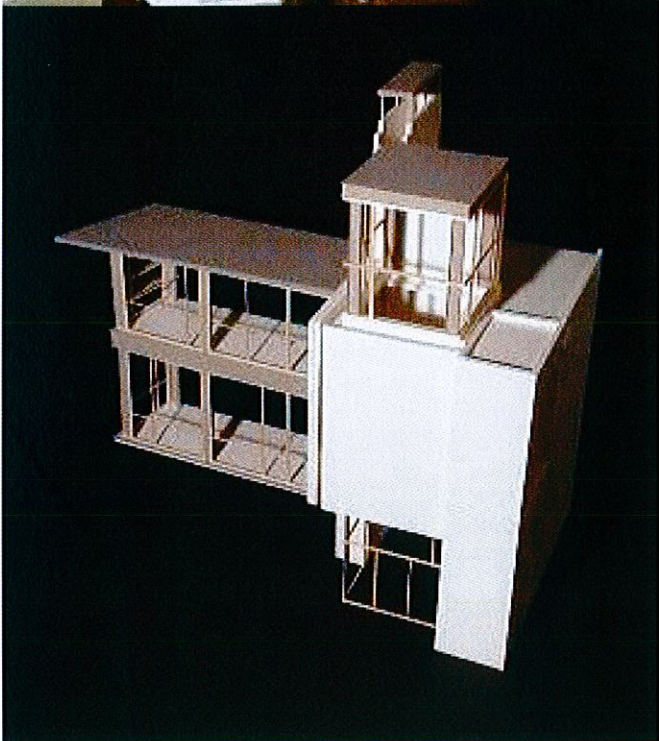
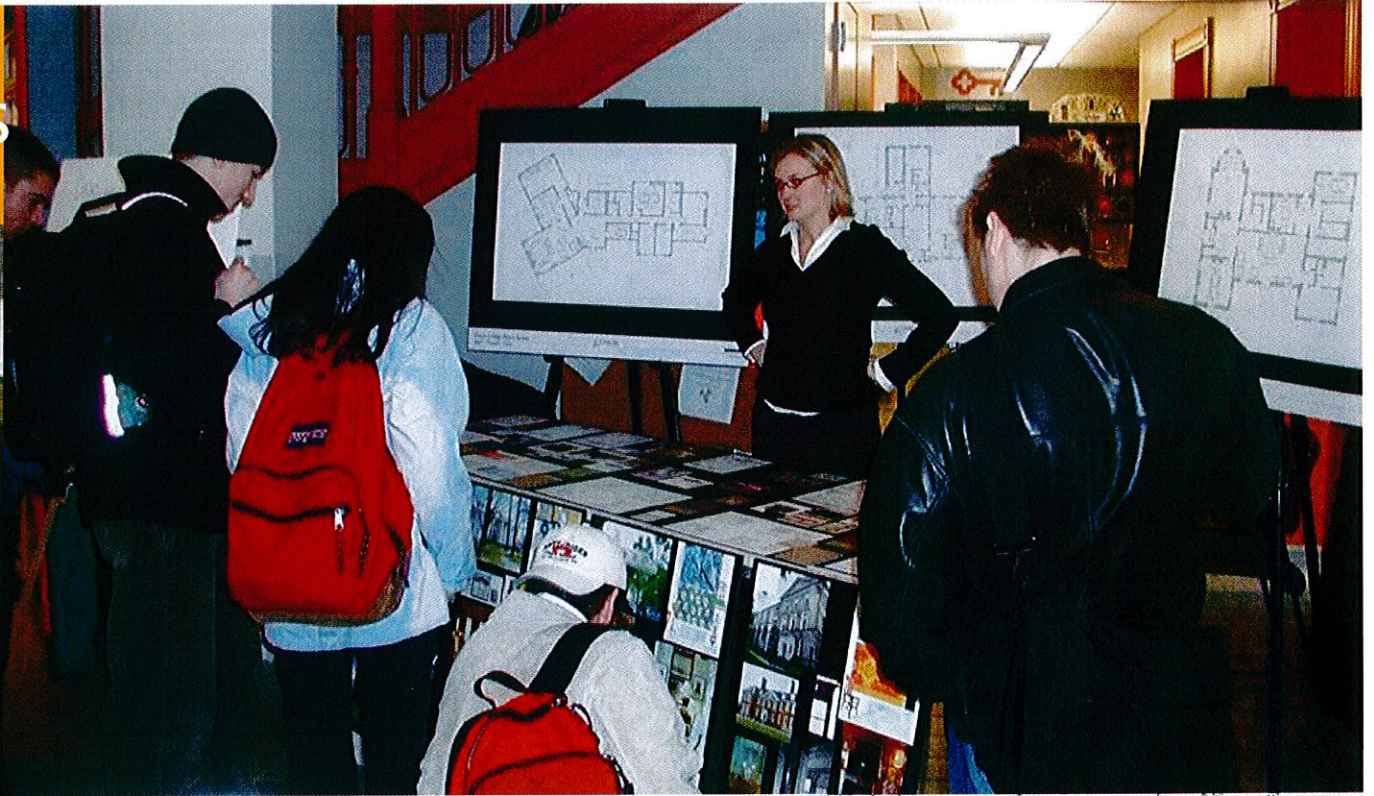
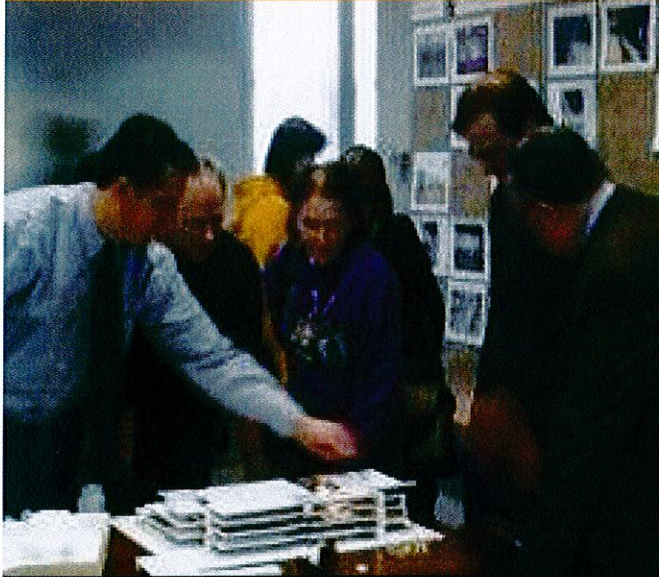
2.5 Months

- Working meetings
- Development of selected option
- Presentation to trustees
- Report documentation

Workshop #5
Design concept

Workshop #6
Final Presentation

Approach/Process

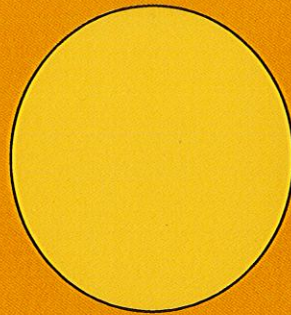
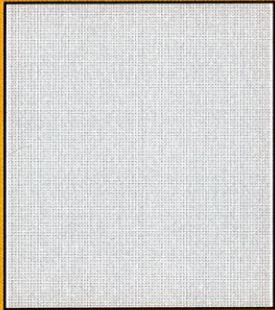


Your Project / Our Approach

- 3 Library Issues and Opportunities
- 4 Thoughts and Observations on
the Penfield Library

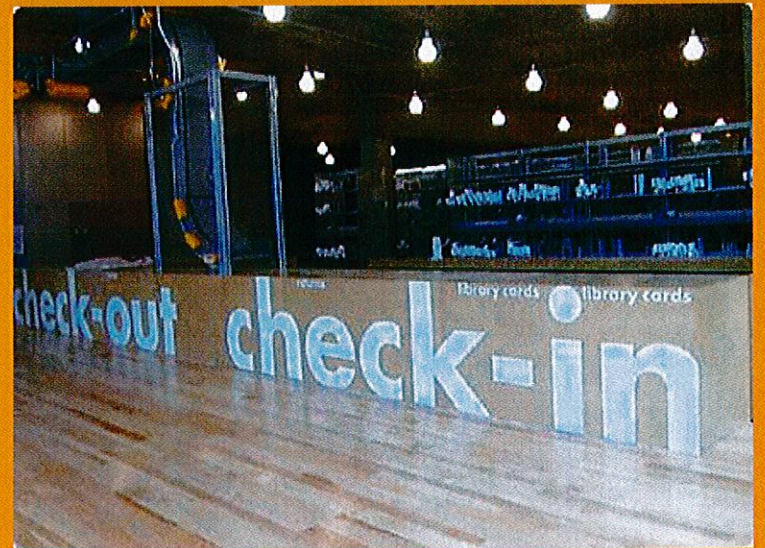
How we think about these things.....

Today and Tomorrow

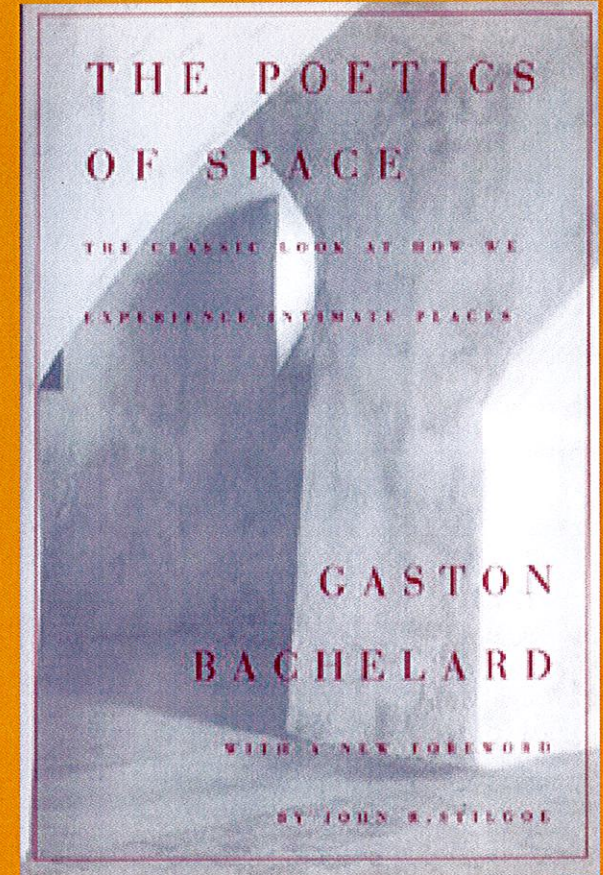
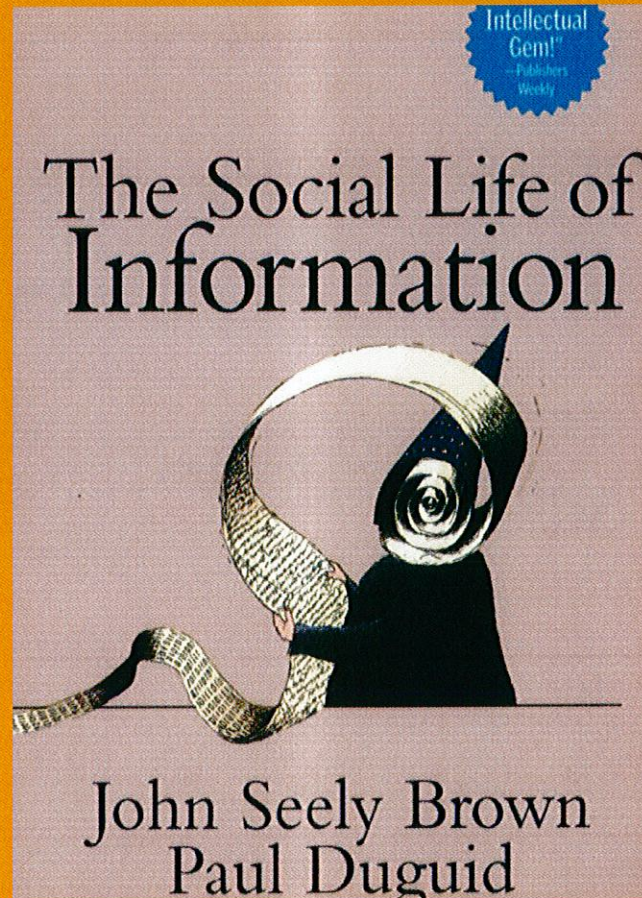
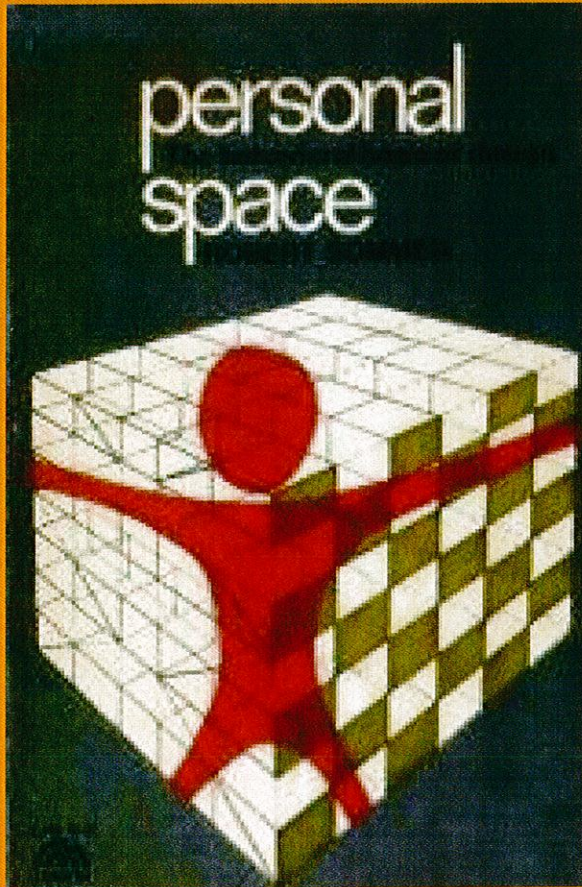


- Vault
- Hierarchy
- Closed
- Solitary
- Linear
- Intimidating

- Beacon
- Democracy
- Open
- Participatory
- Non-linear
- Welcoming

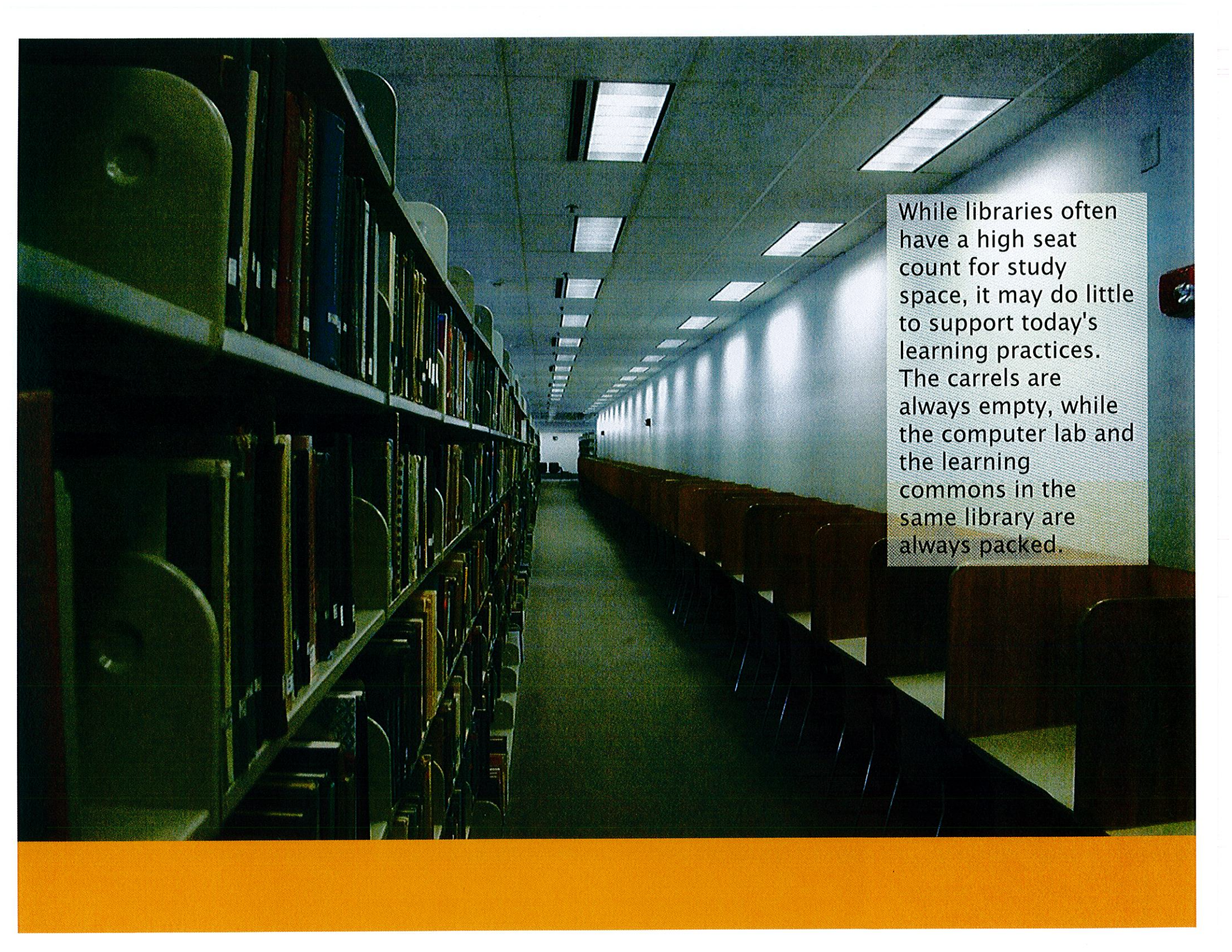


Provocative ideas about space & human behavior




The library as a sensory experience





While libraries often have a high seat count for study space, it may do little to support today's learning practices. The carrels are always empty, while the computer lab and the learning commons in the same library are always packed.

A long, brightly lit school hallway with a polished floor. Numerous students are sitting on the floor, some leaning against the walls, reading books or papers. The hallway is lined with doors and has recessed ceiling lights. The scene depicts a common area where students might study or relax.

Where students hang out before or after class is potentially an ideal learning environment, but is often more like this.

Evolving learning styles

NEW LEARNING STYLES

- Peer-to-peer learning
- Collaborative
- Value engagement and experience
- Visual and kinetic
- Experiential learning
- Service learning

NEW LEARNING ENVIRONMENTS

- Flexible learning spaces
- Self-directed learning spaces
- Informal learning spaces
- Interdisciplinary spaces
- Multi-purpose spaces
- Learning commons
- Virtual spaces

Evolving learning styles

ROLE OF THE LIBRARY

- Information Commons → Digital Commons
- Increasingly caters to collaborative learning
- Repurposing of desktop computer labs
- New library elements include:
 - Social spaces
 - Informal spaces
 - Teaching spaces / smart classrooms
 - Group study spaces
 - Collaboration spaces
 - Technology centers
 - Coffee shops and cafes



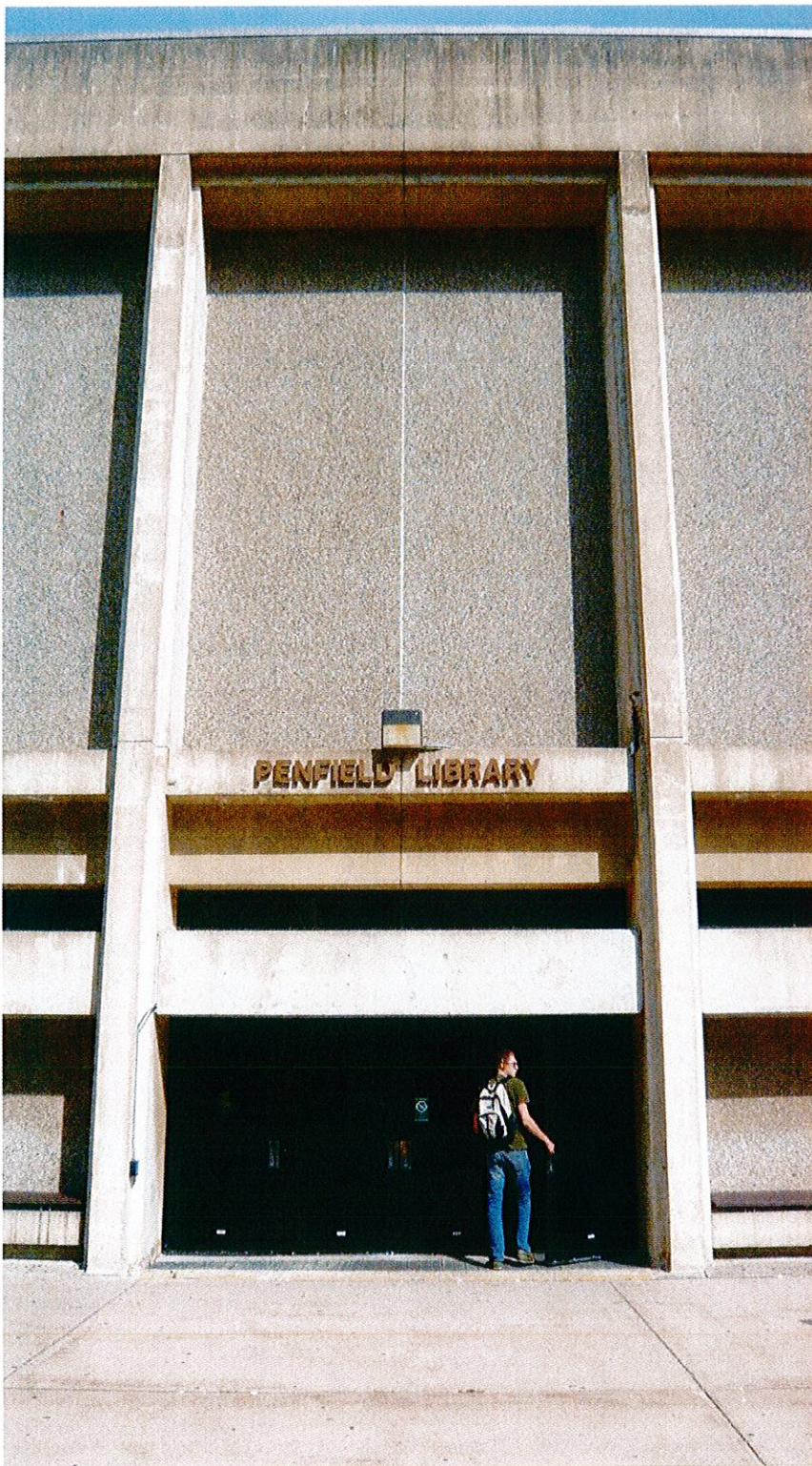
UMKC Miller Nichols Library

Vision

- Have an infrastructure that will support a technologically advanced, comfortable, functional, and inviting 21st century library;
- Provide efficient, coordinated, inviting "one-stop" service areas to meet the needs of all library users;
- Provide comfortable and efficient workplaces for staff;
- Have a variety of attractive and flexible spaces for research, teaching, and study that will meet varying user needs and learning styles;
- Include services dedicated to the academic success and professional development;
- Create spaces for activities that build connections, partnerships, and student-faculty interactions in support of the College mission and goals and of informal literacy;
- Ensure preservation and accessibility of its physical and virtual resources, especially those that are unique to Penfield Library.

Your Project / Our Approach

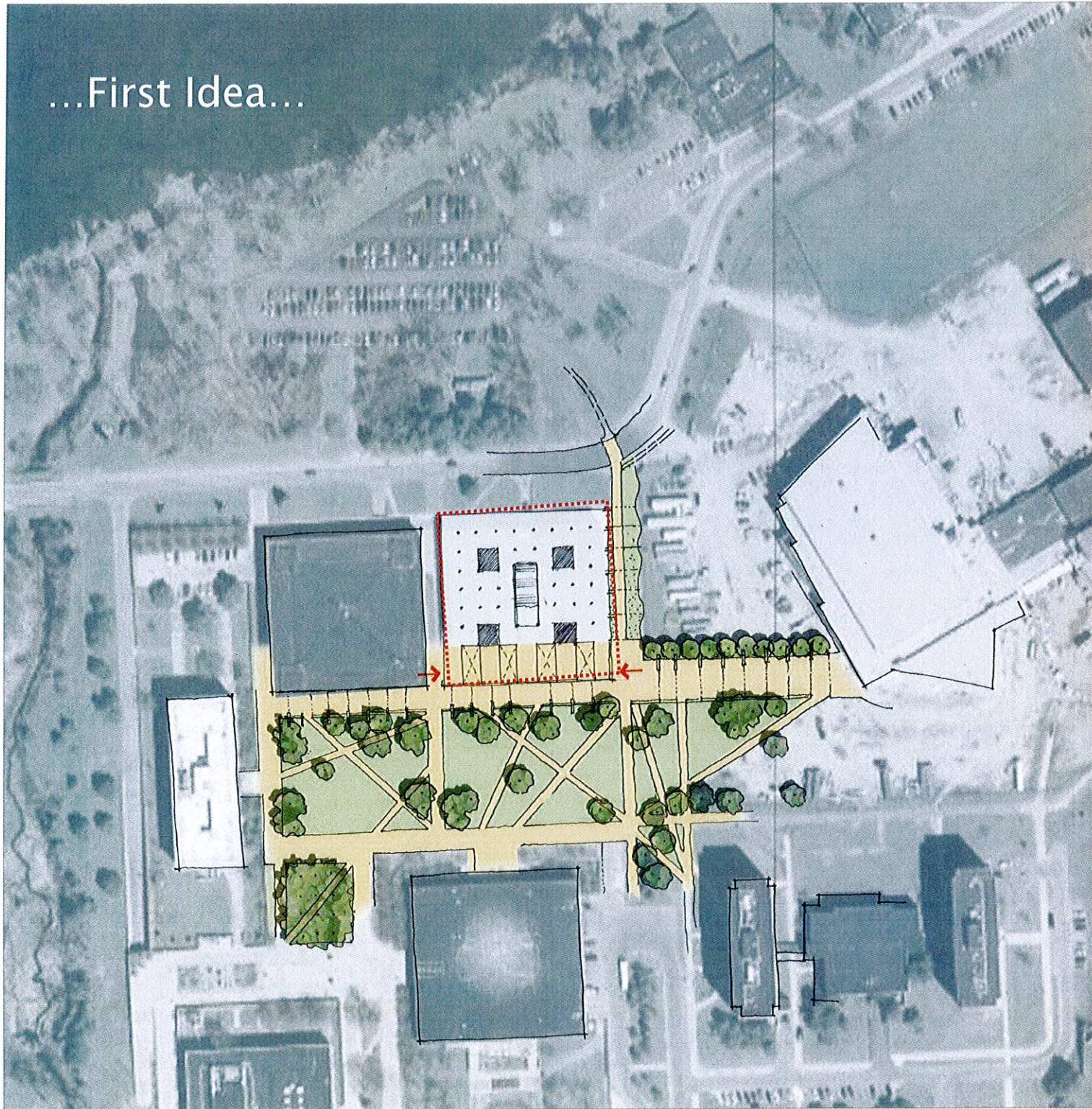
- 3 Library Issues and Opportunities
- 4 Thoughts and Observations on
the Penfield Library



- Not a clear front door
- Lack of transparency / visual connection from campus
- Stratified floors, limited connectivity
- Limited range of study seats
- Major Upgrades for Staff Areas
- Missing program spaces
- Need to update all systems and infrastructure



...First Idea...



- Pull Campus circulation into Library

Transparency from Quad

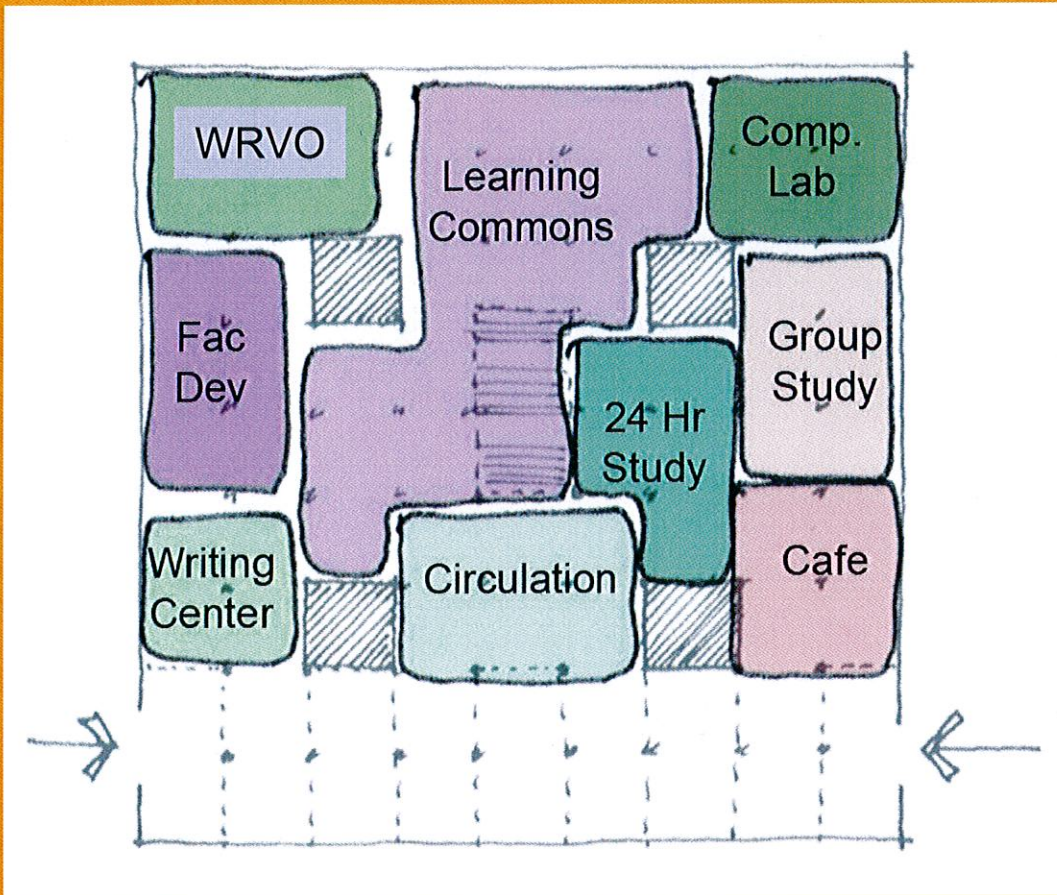
- Activated First Floor

- Connectivity of Upper Floors

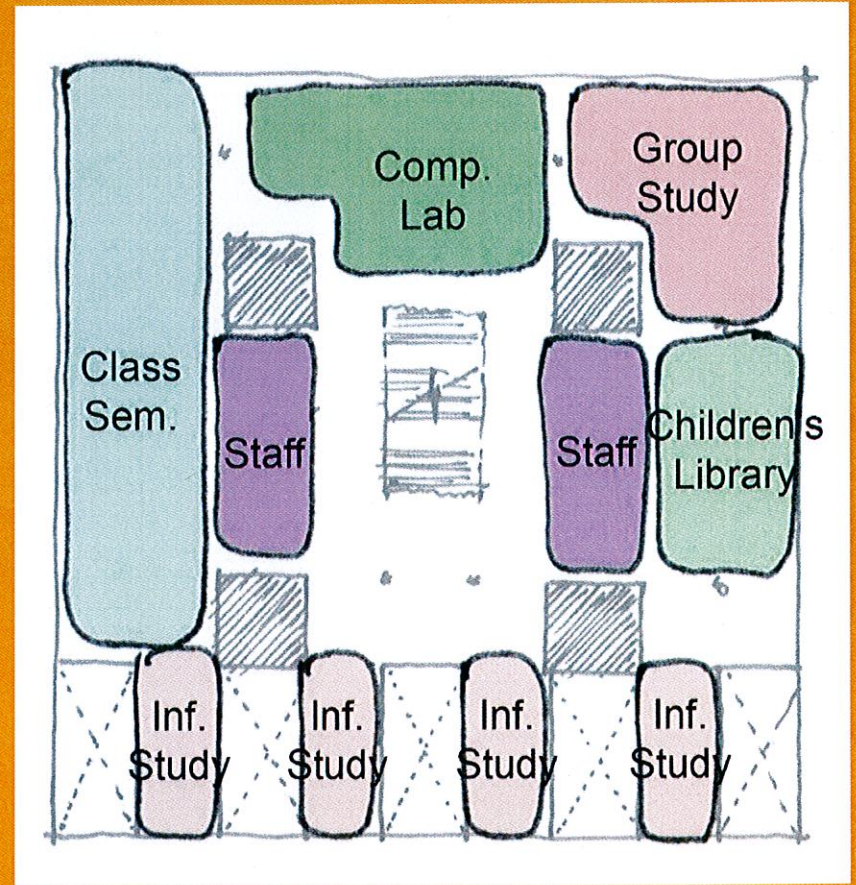
- Green Quad



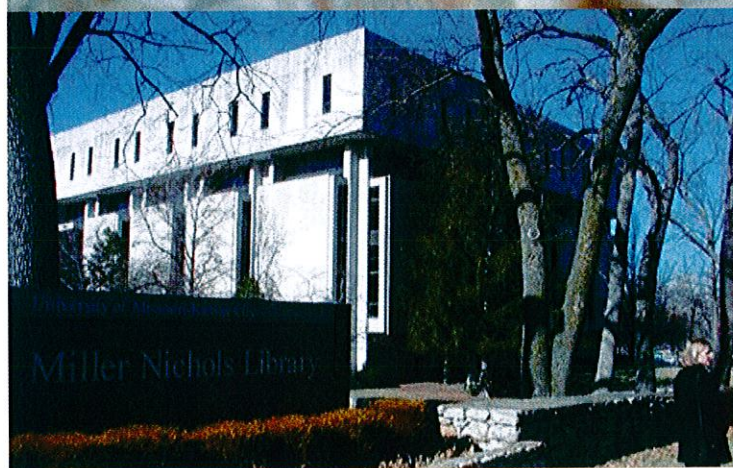
...First Idea...

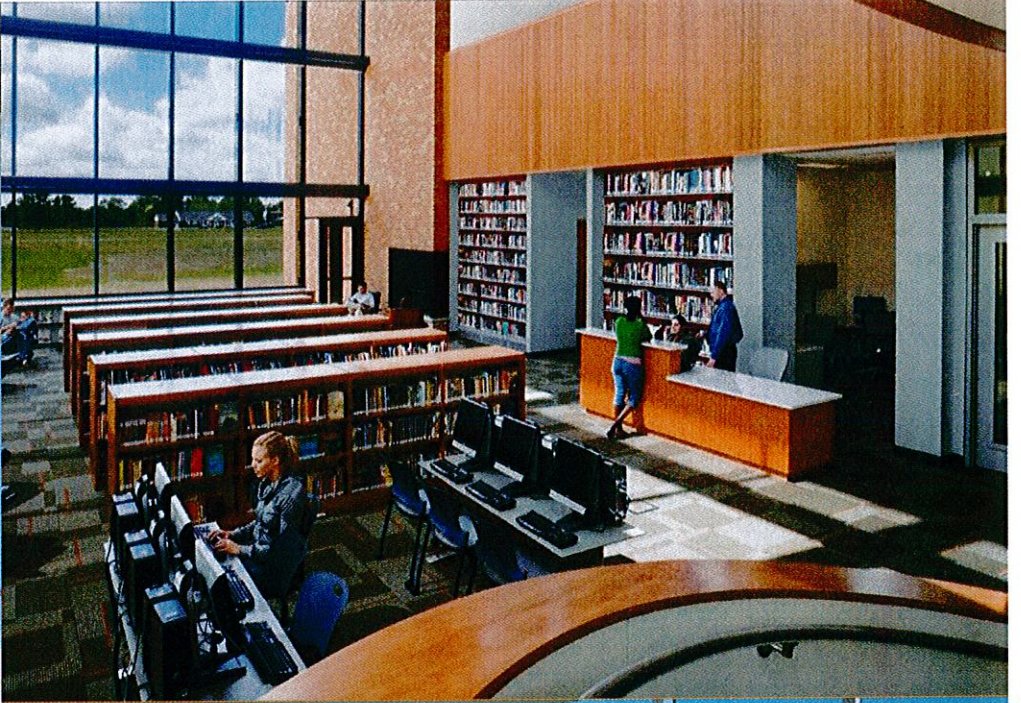


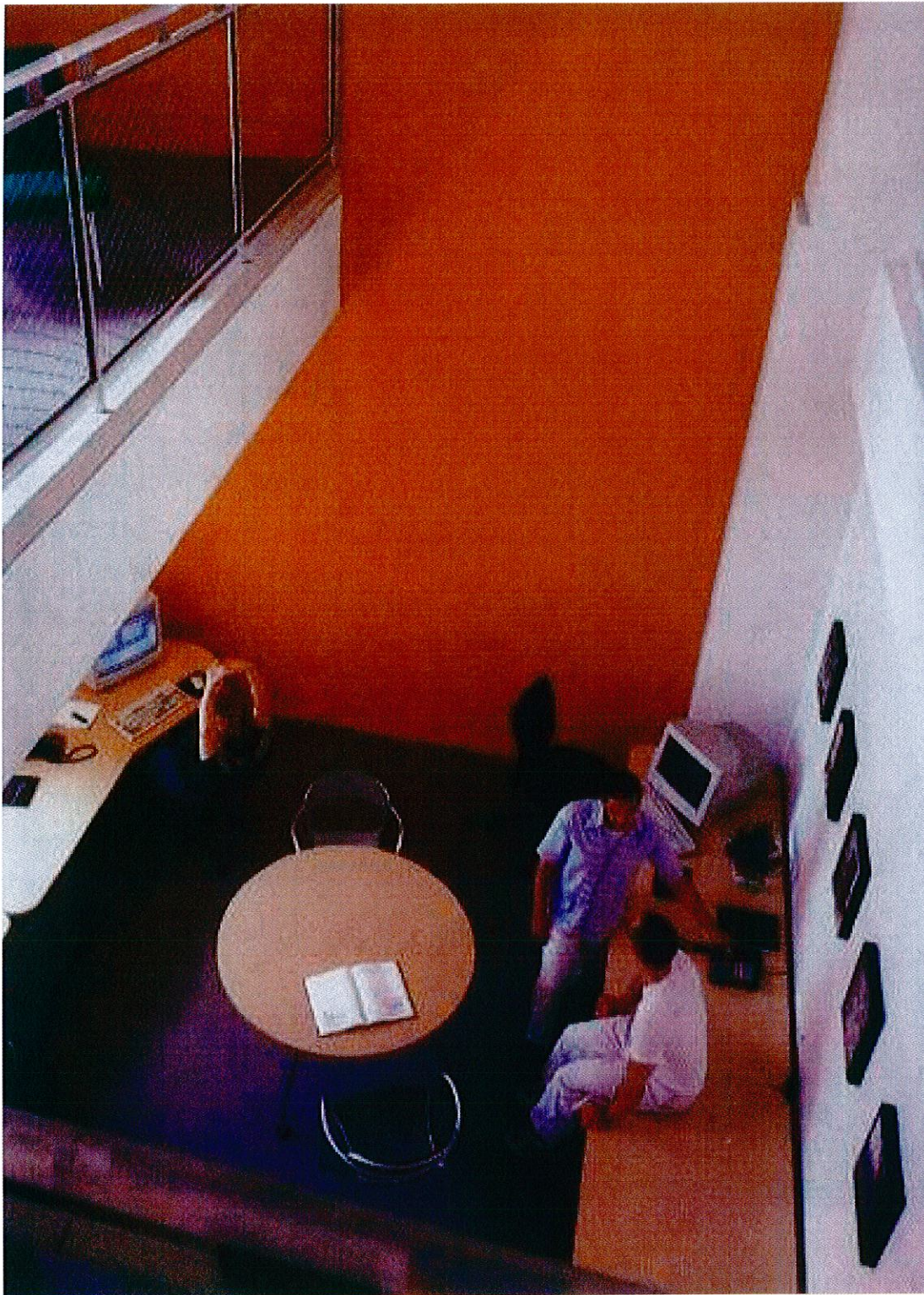
First Floor



Second Floor









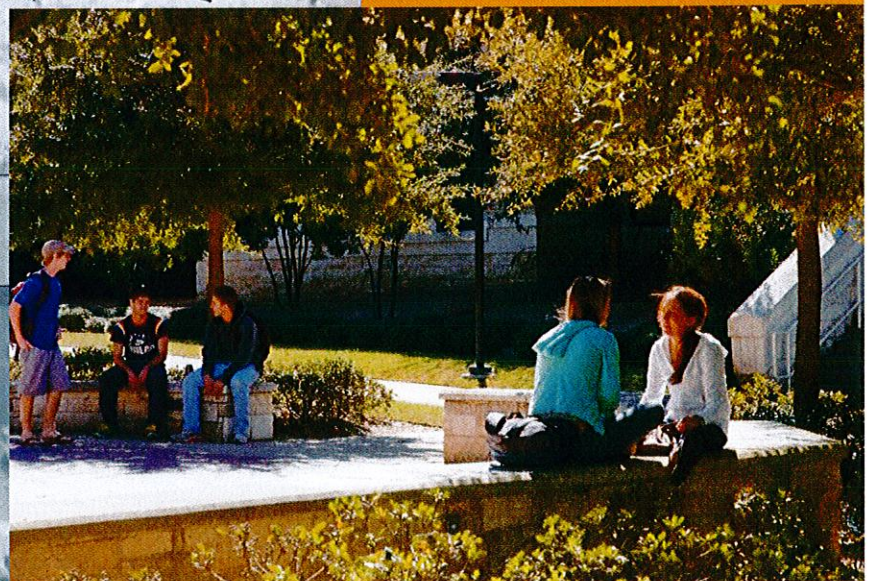
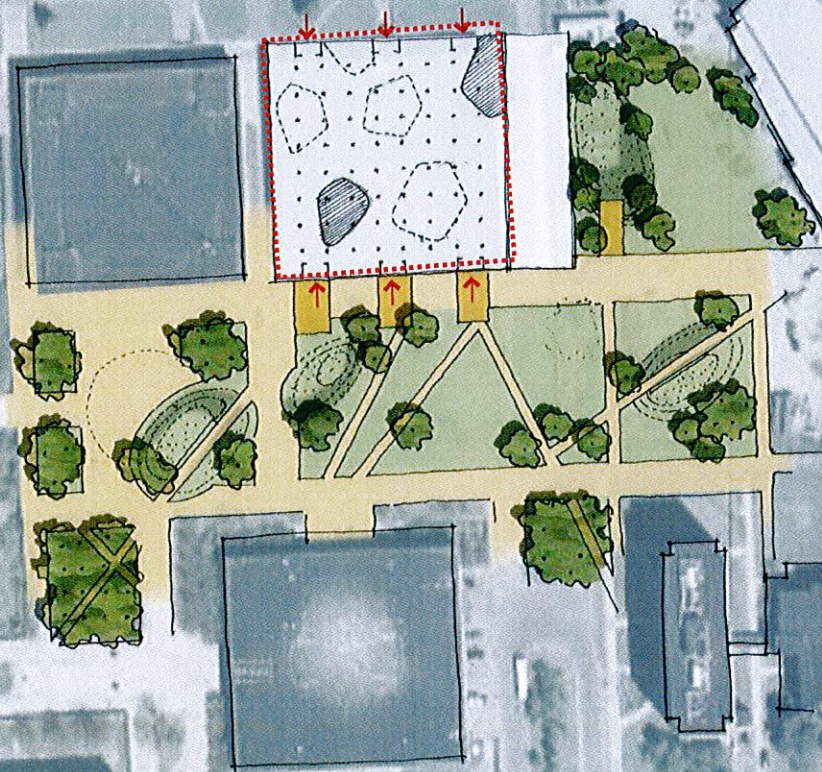
...Second Idea...

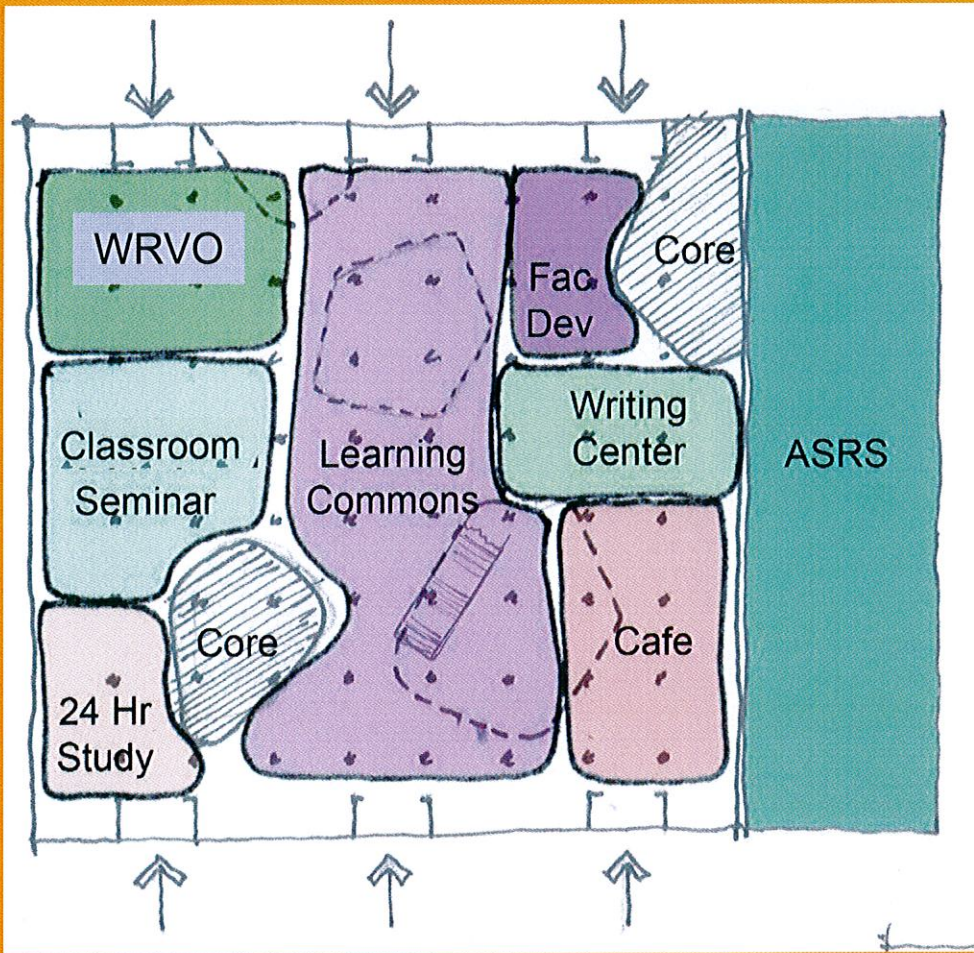
- Permeability of First Floor

- ASRSystem

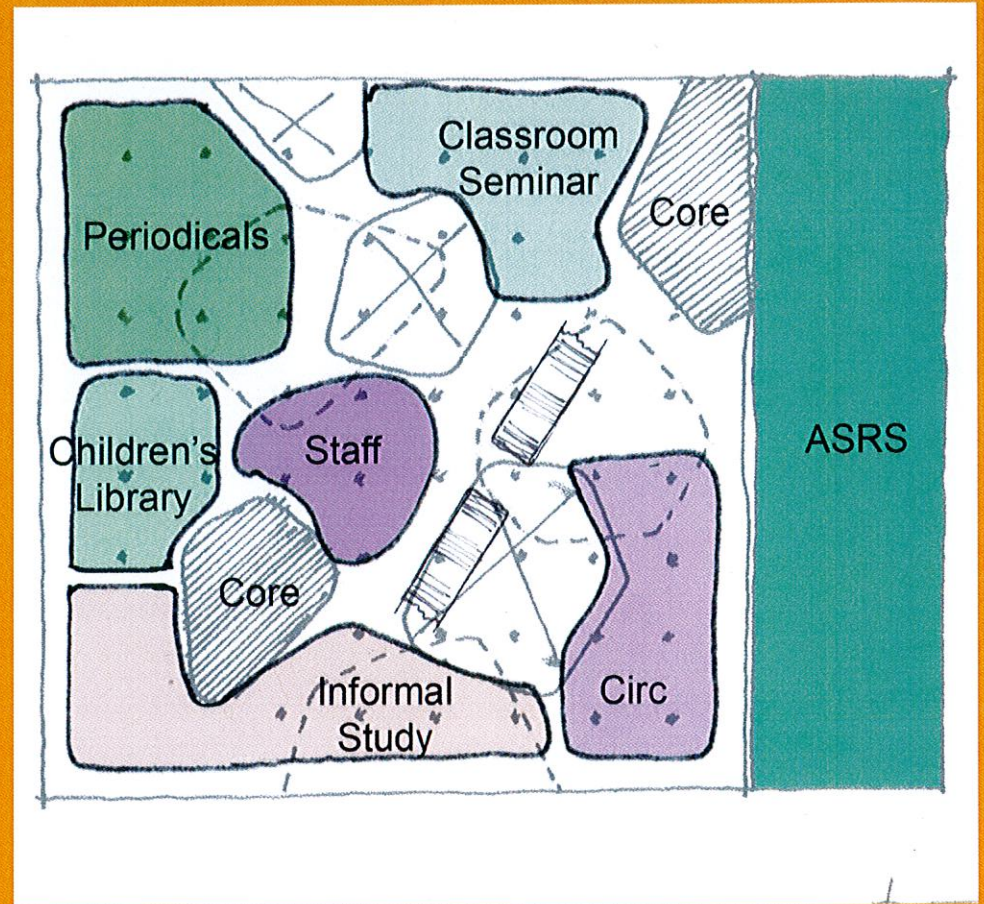
- Connectivity of Floors

- Green/Plaza Quad





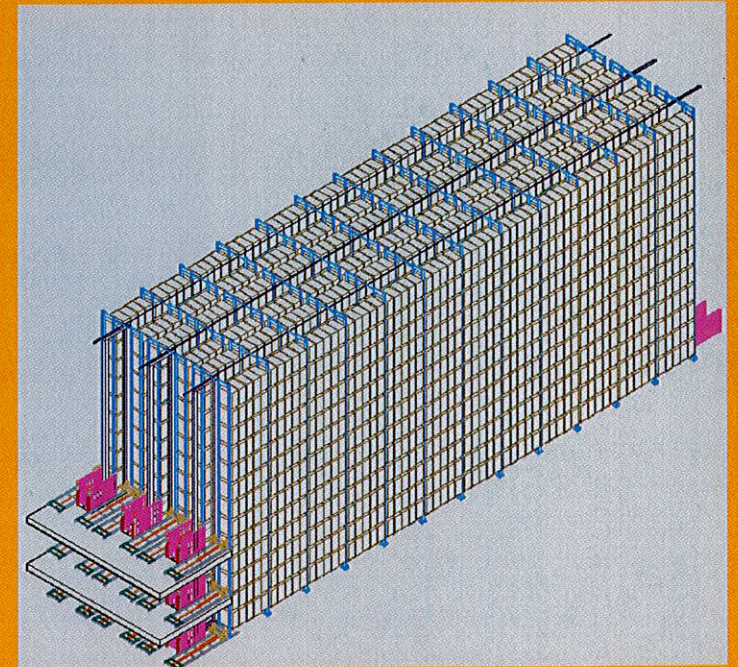
First Floor

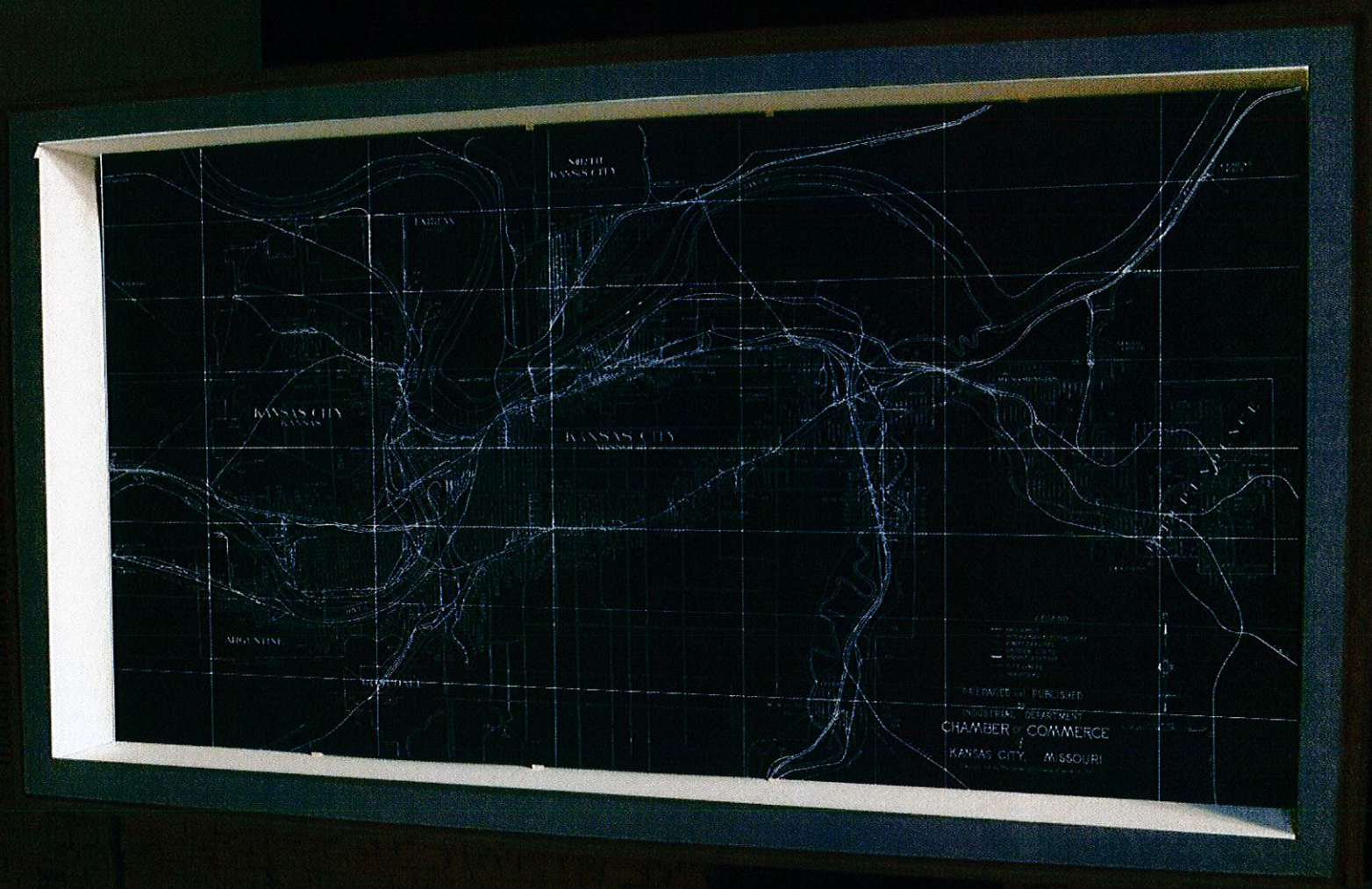


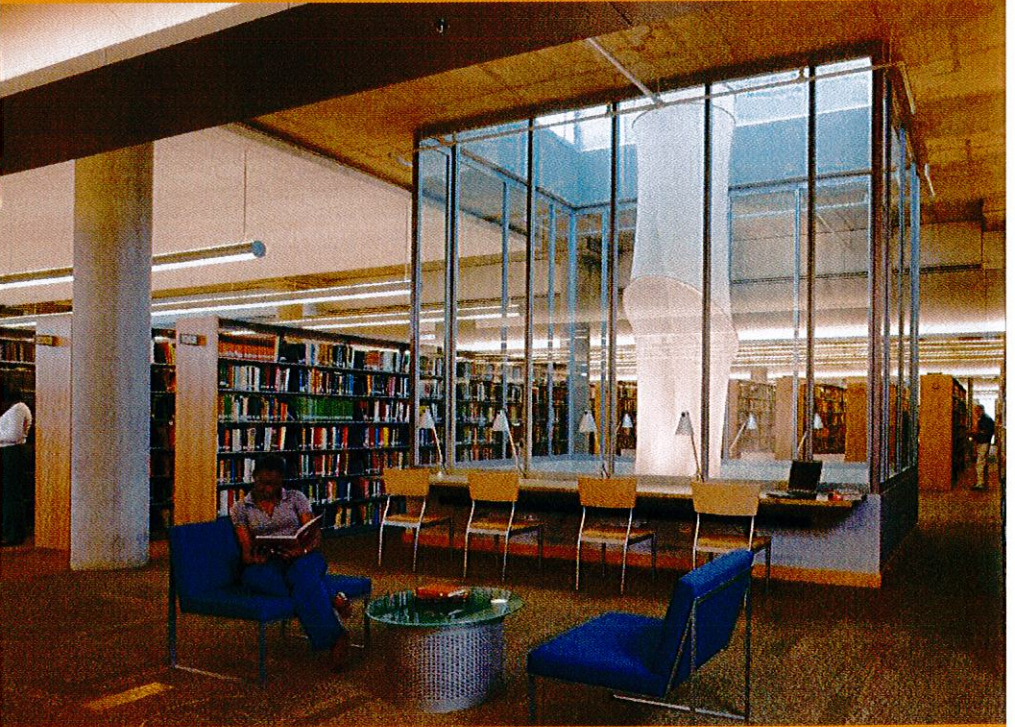
Second Floor

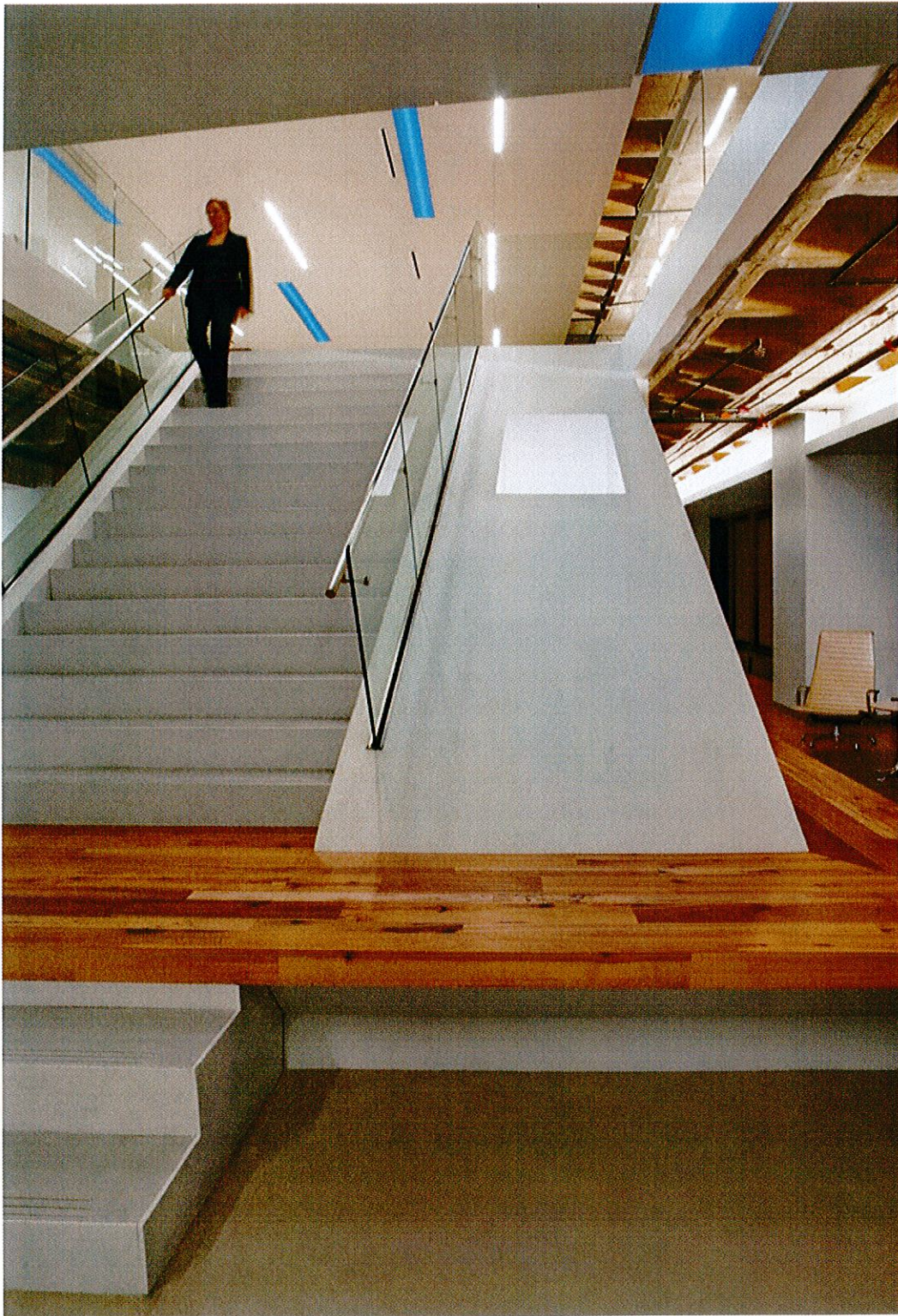


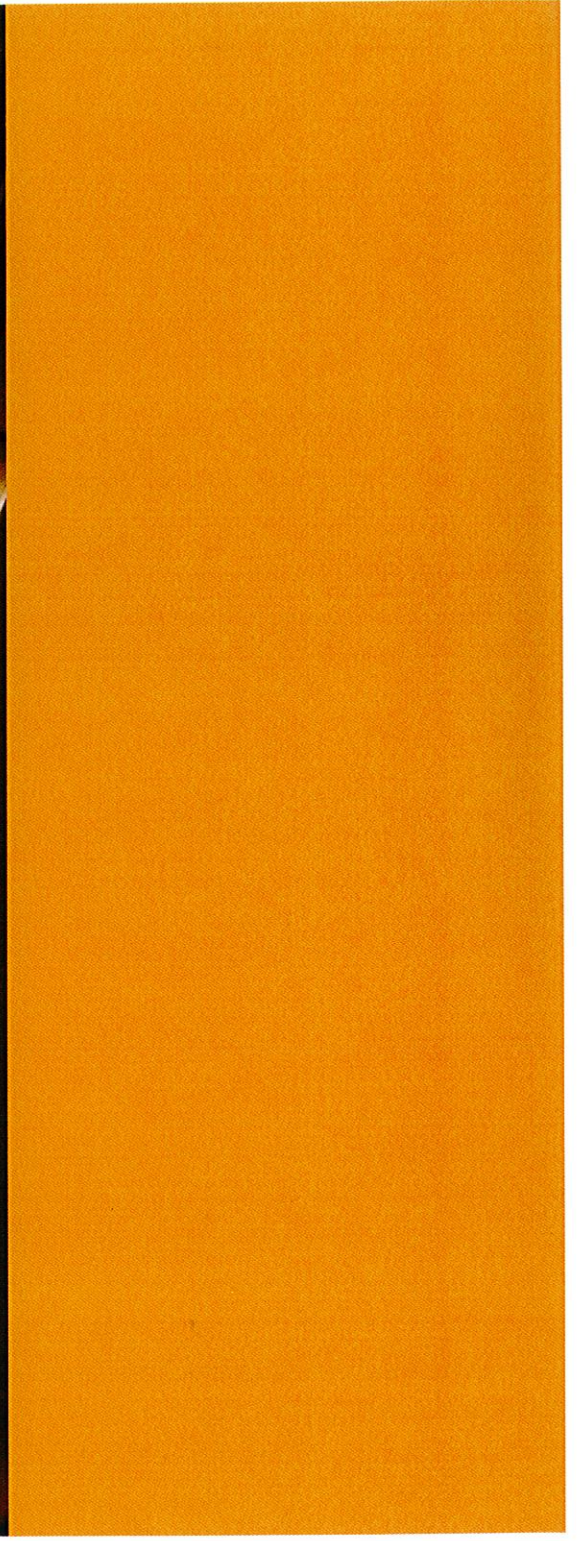
ASRS System



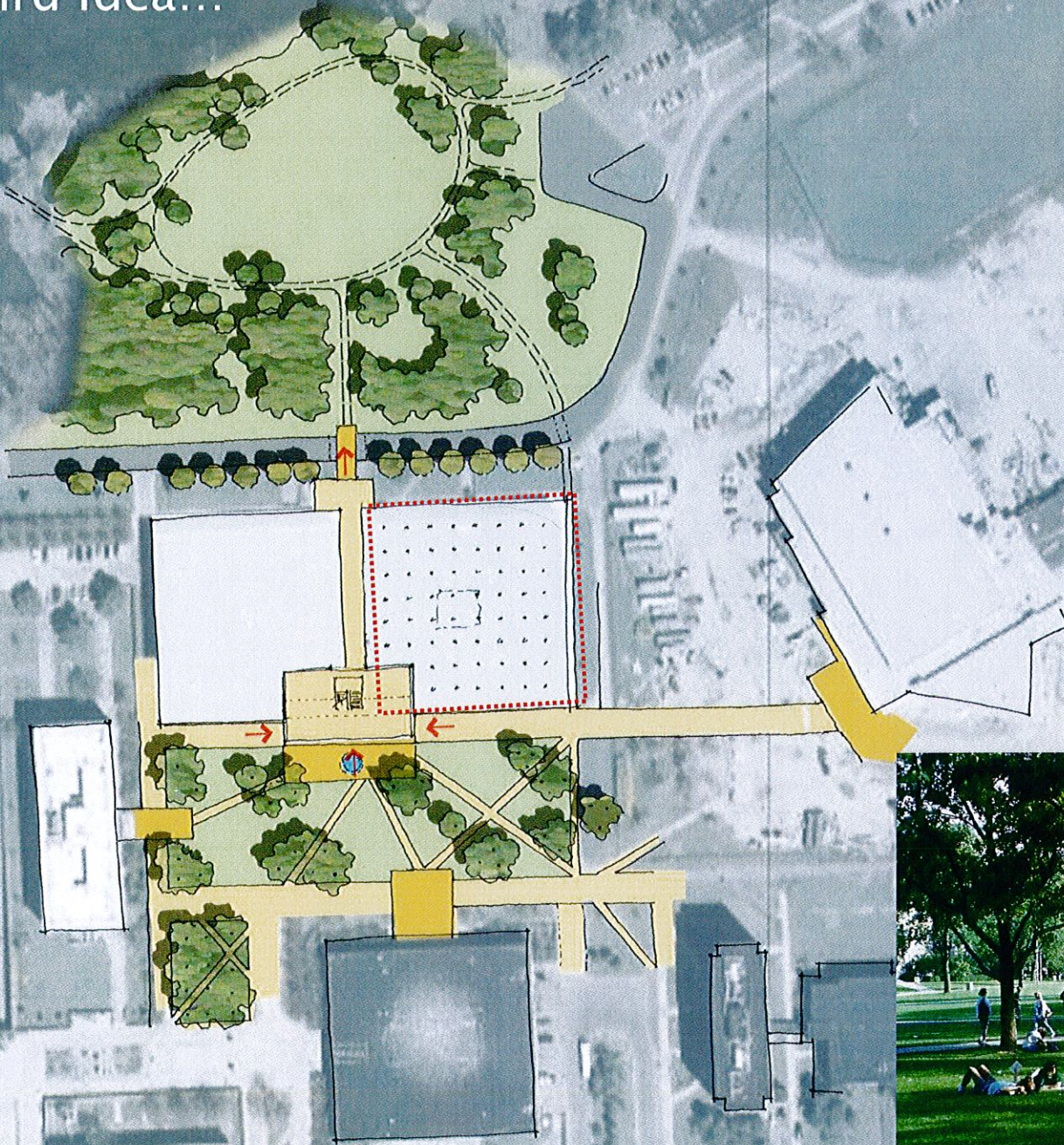






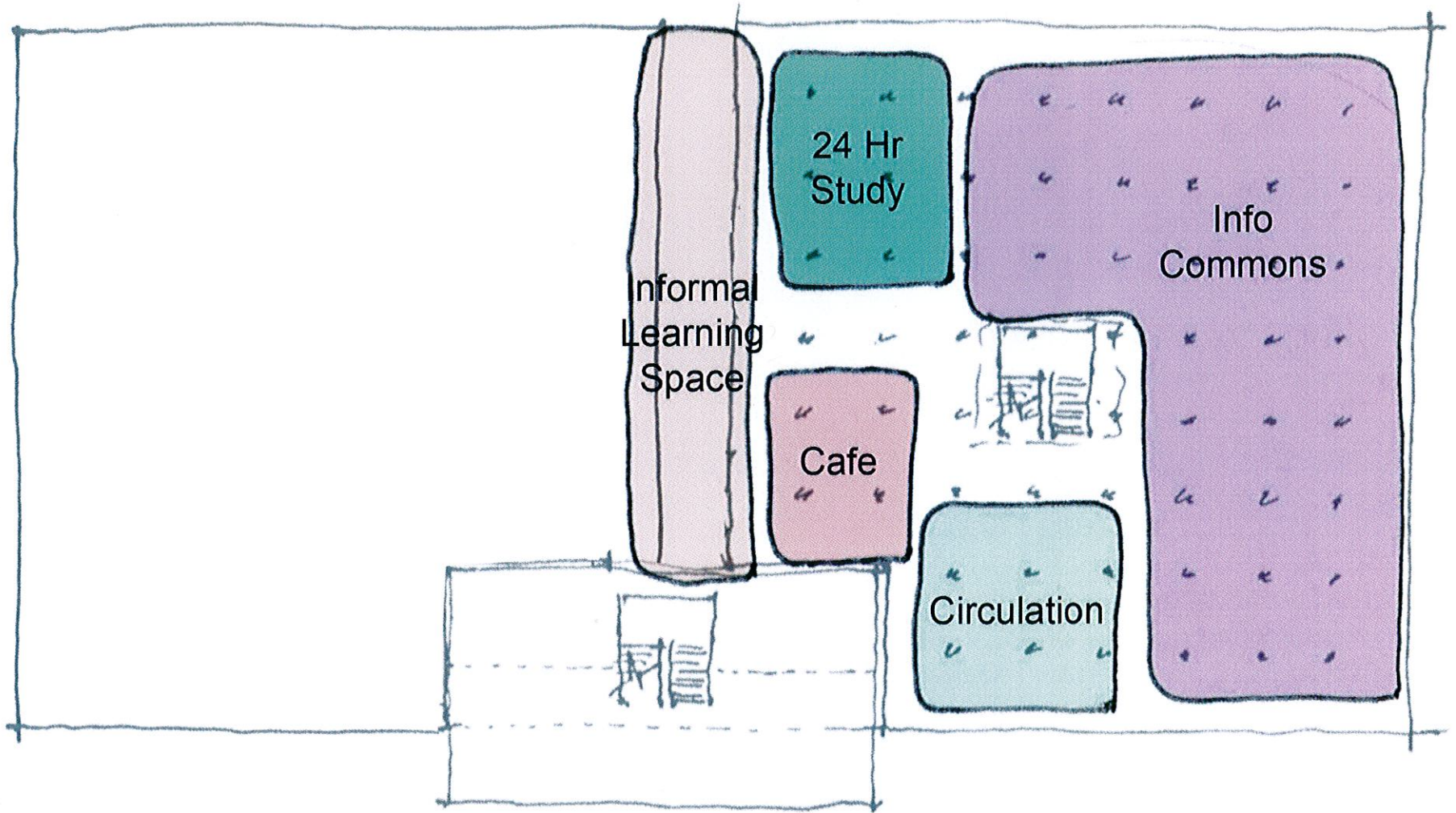


...Third Idea...

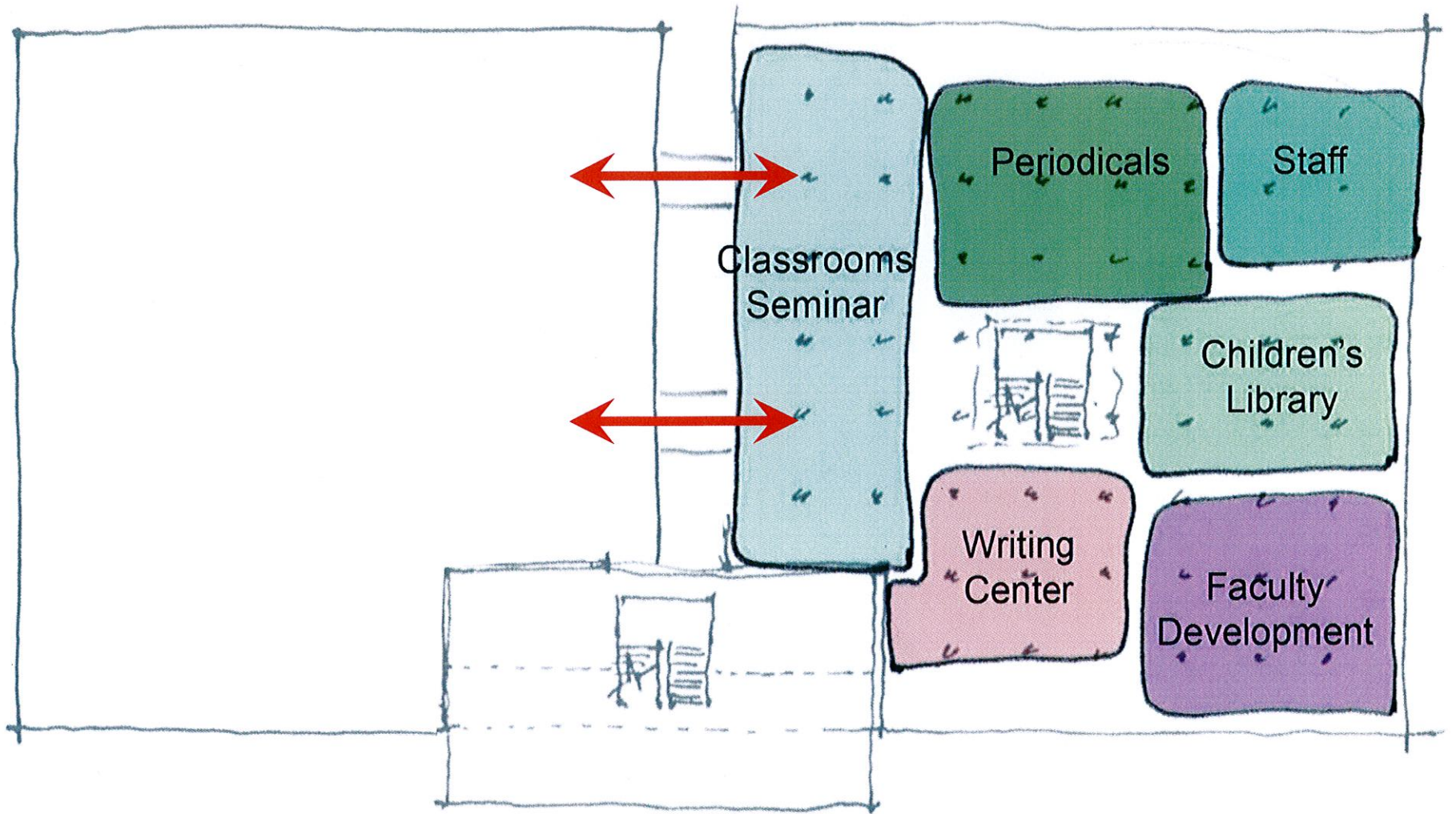


- New Entry
- Connection to Lanigan
- Green Quad
- Lake Connection

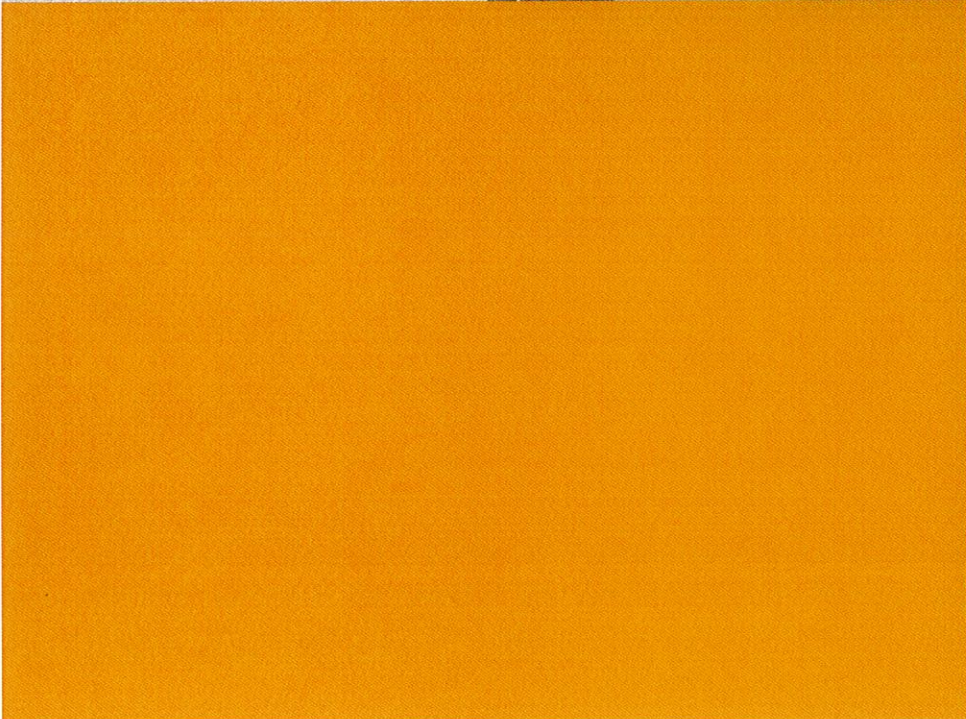


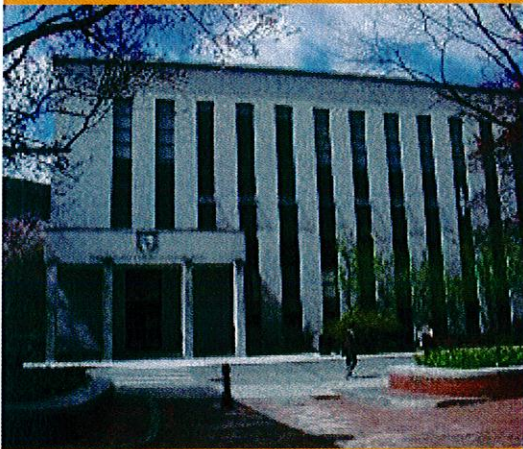


First Floor



Second Floor





Before



After

Creating a New Identity

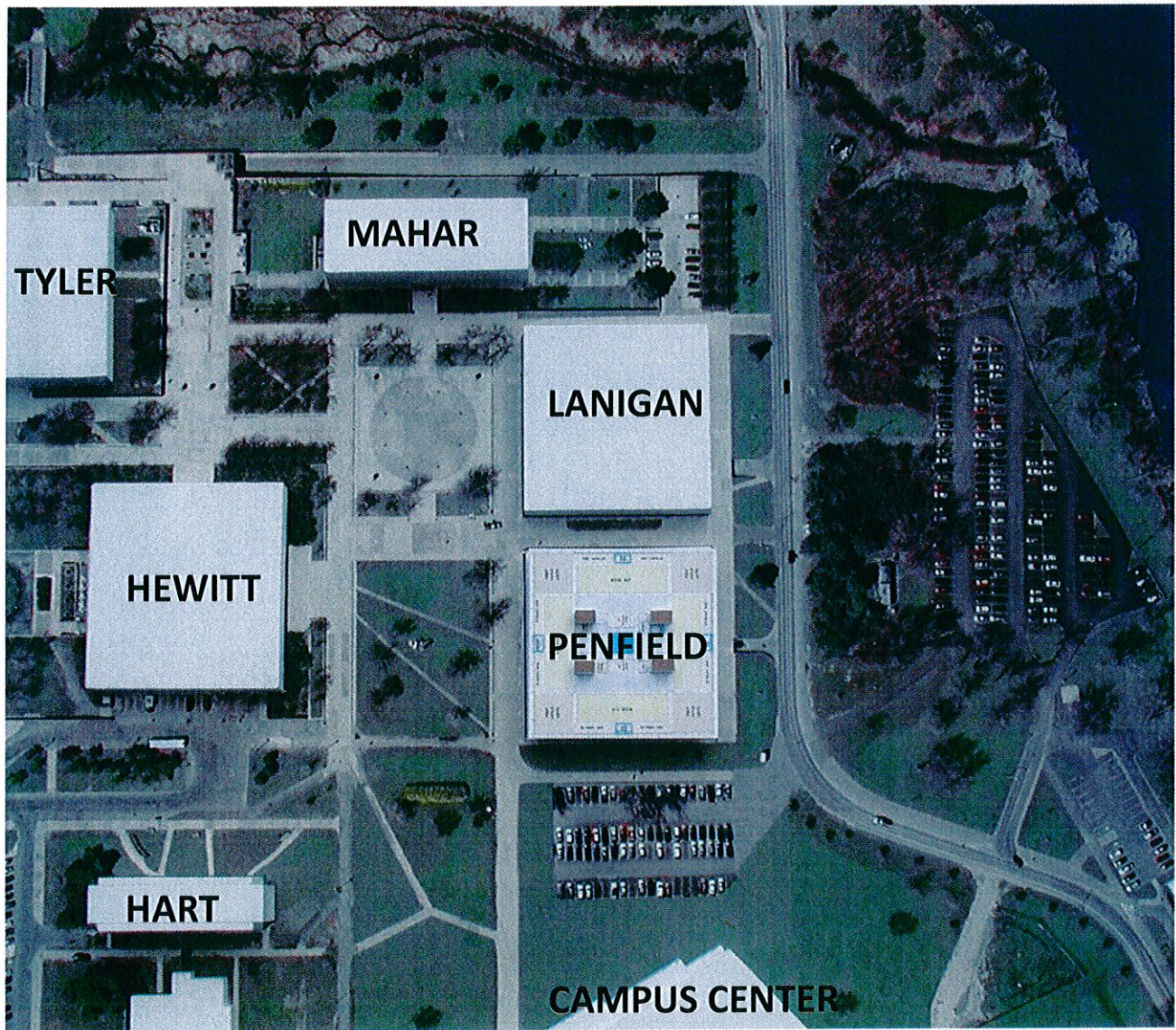
Northeastern University



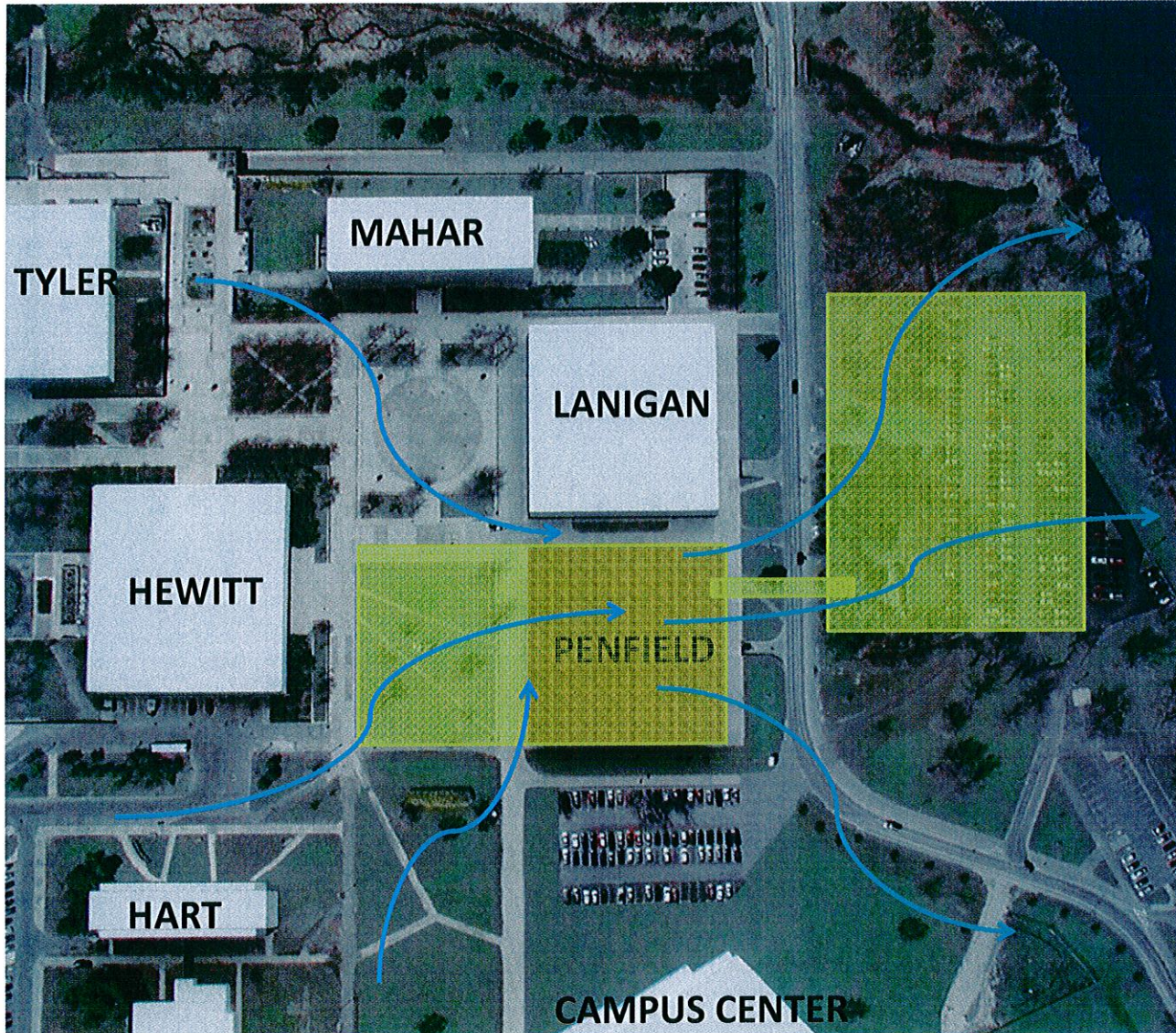




end



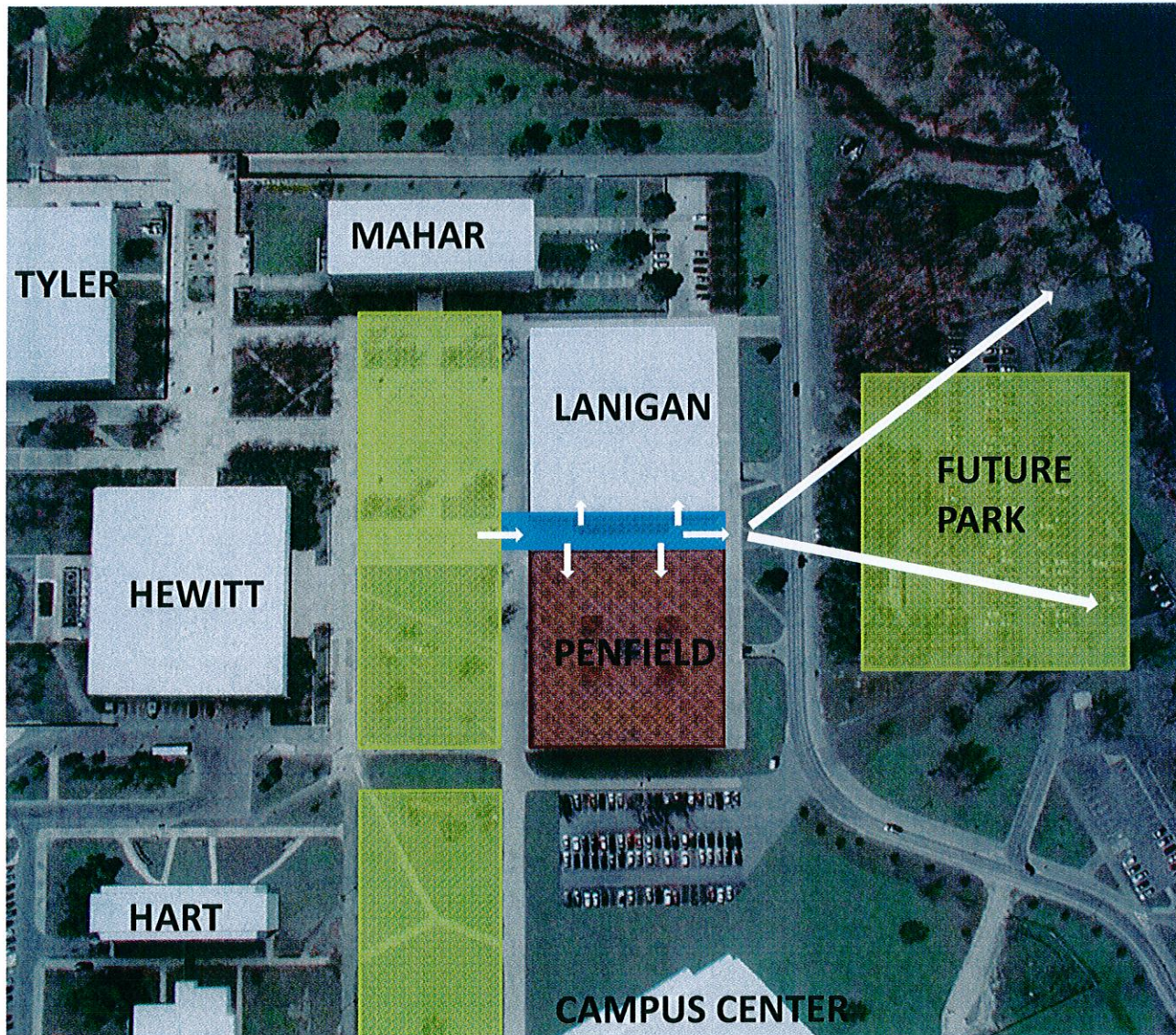
Existing Site



LAKE ONTARIO

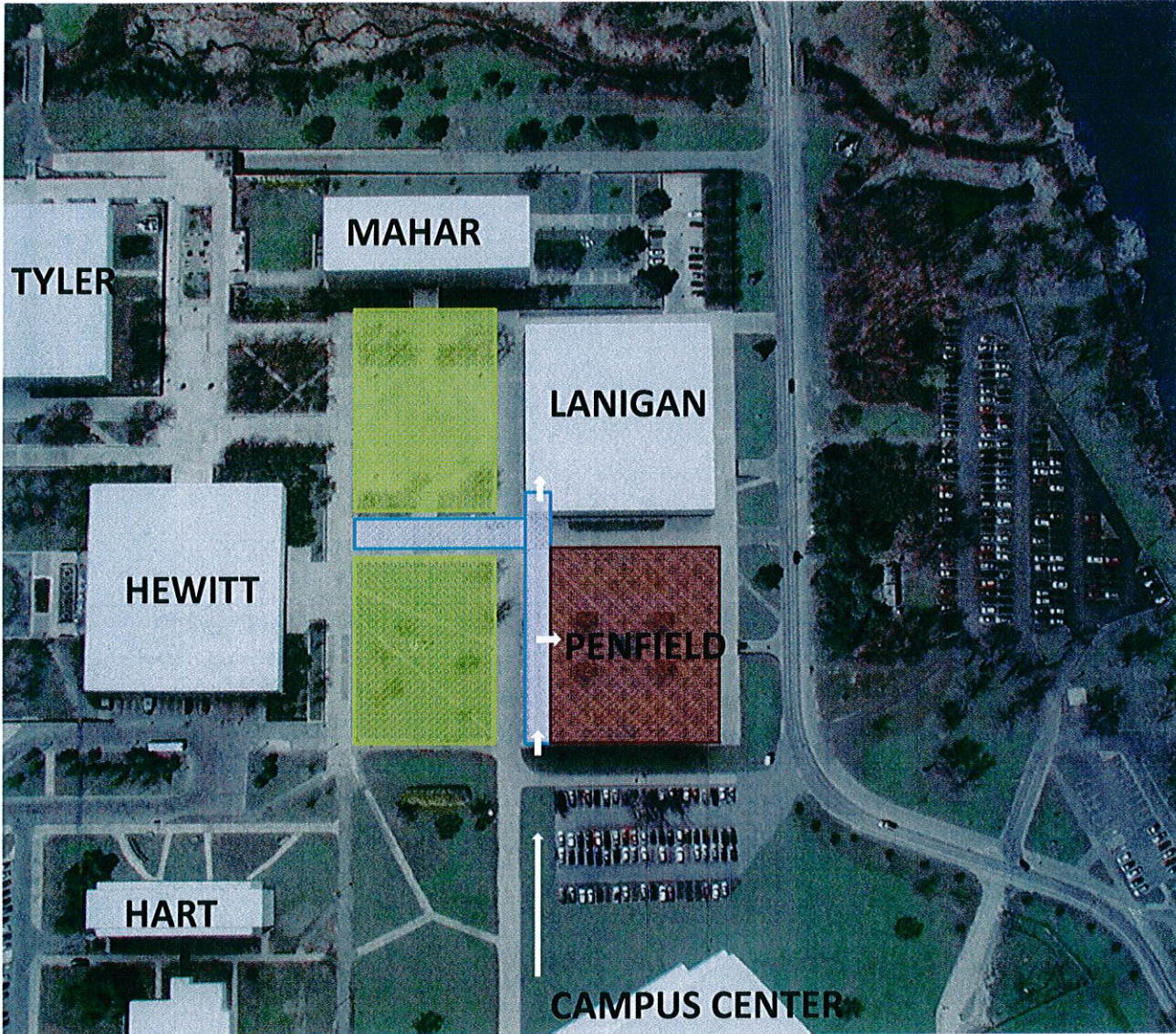
1

**Elevate Library
Create Ground Floor
Academic Services**



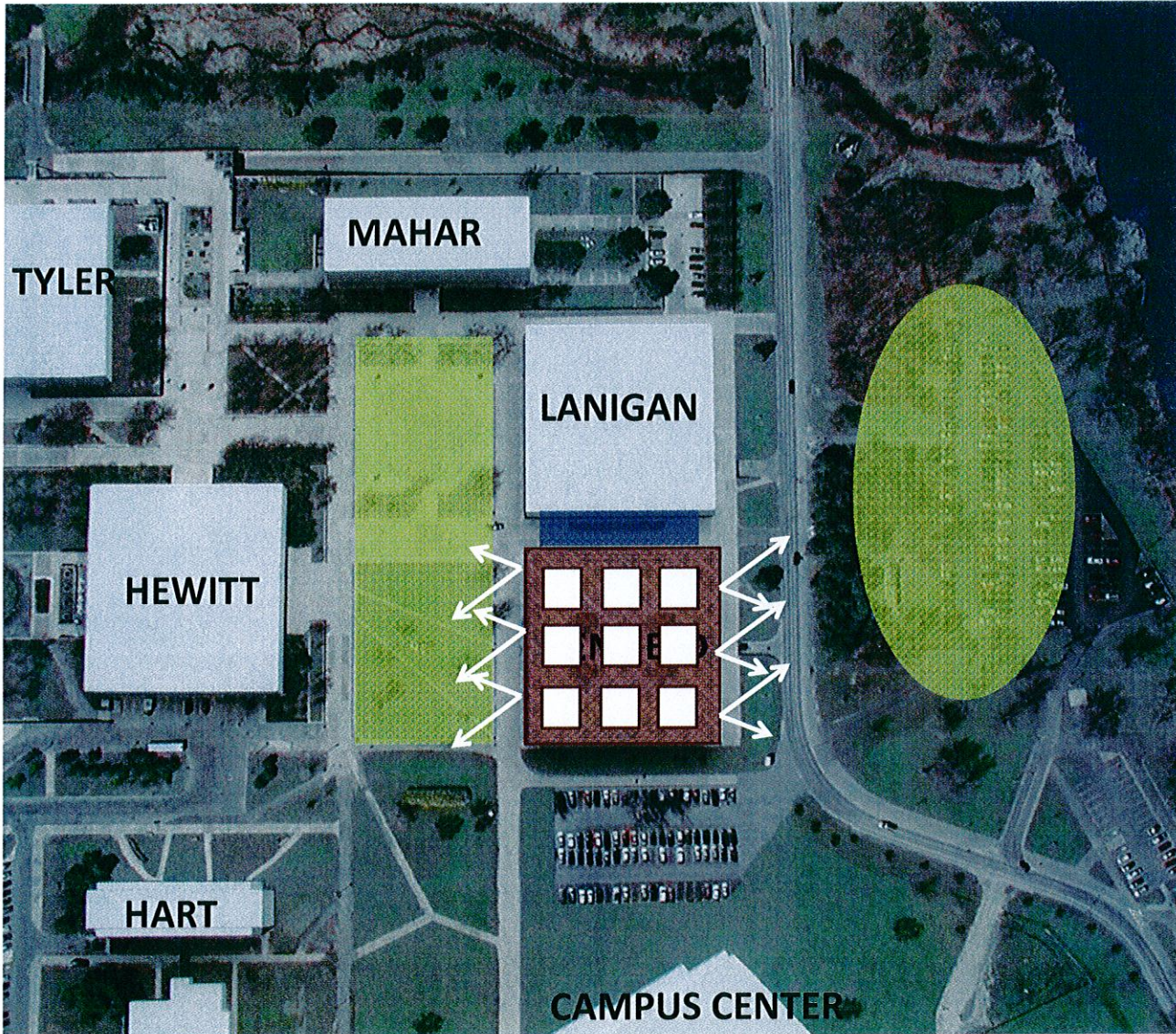
2

**Create Learning
Commons
Connection
between Lanigan
and Penfield**



3

Create Arcade Connection



4

Create Ubiquitous Library

1

OPENS UP THE GROUND PLANE

UTILIZE BASEMENT FOR COMPACT SHELVING, STORAGE, & MEP

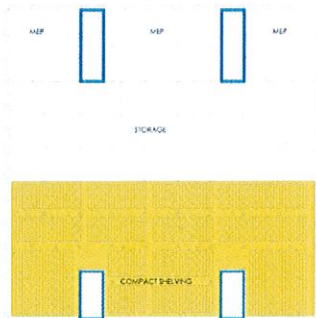
MAINTAIN 100,000 VOLUMES IN BROWSABLE COLLECTION

43, 000 GSF OF PROGRAM OPPORTUNITIES

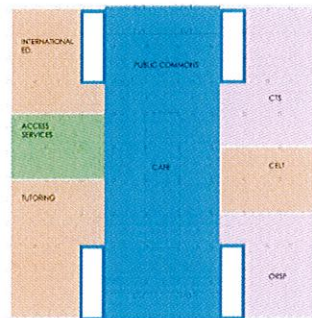
4 CORNERS OF PENFIELD BECOME 2 STORY LIGHT BEACONS



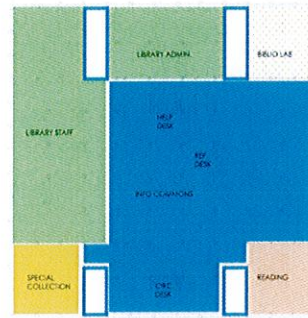
Elevate Library Create Ground Floor Academic Services Program



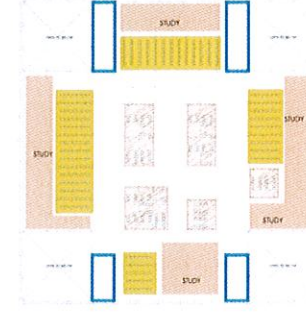
L



G



2



3

2

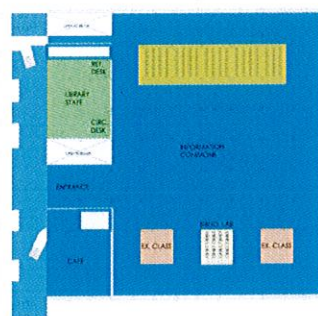
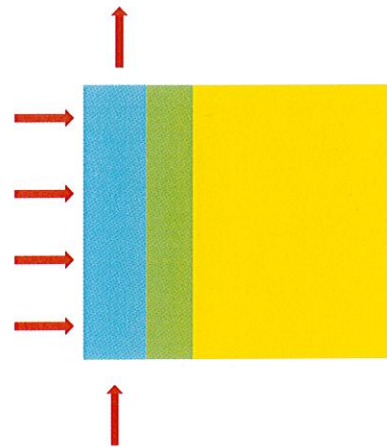
Create Learning Commons Connection between Lanigan and Penfield Program

CONDENSE STAFF AND TEACHING SPACES VERTICALLY – CLEAR ORGANIZATION OF PROGRAM

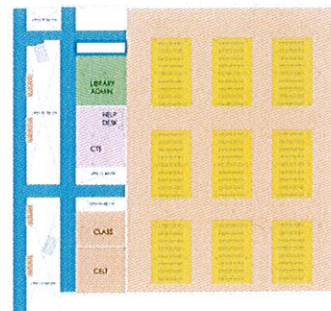
LIBRARY STAFF AND FACULTY ARE ACCESSIBLE FROM TWO SIDES - THE PUBLIC AND THE LIBRARY

OPENS UP LANIGAN WITH NEW STUDY SPACES

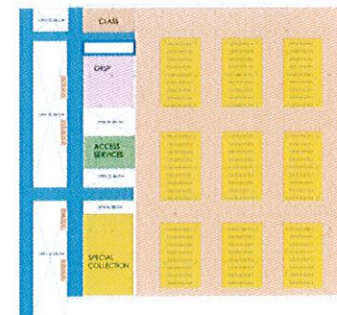
NEW PUBLIC CIRCULATION SPINE PROVIDES CONDITIONED ENTRY TO LAKE AND PARK BEYOND



G



2



3

3

Create Arcade Connection Program

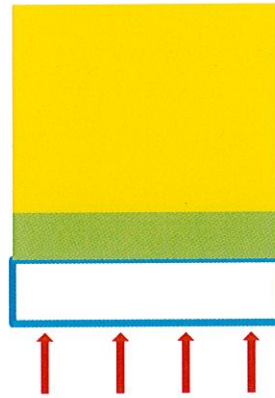
NEW ARCADE ENGAGES QUAD

OPPORTUNITY FOR "SHOPFRONT" PROGRAMS ON QUAD / CAMPUS CIRCULATION SYSTEM

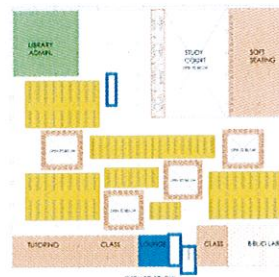
POSSIBLE MULTI-STORY STUDY COURT FACING LAKE

CREATES A NEW FACE FOR PENFIELD

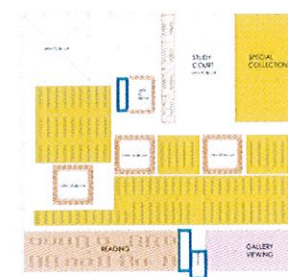
BASEMENT FOR STORAGE, MEP, SOME COMPACT SHELVING



G



2



3

4

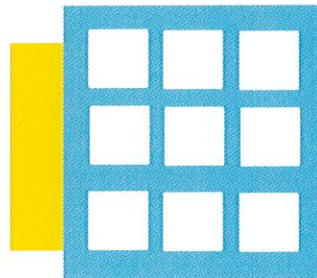
THE BOOKLESS LIBRARY

THE LIBRARY WITHOUT WALLS

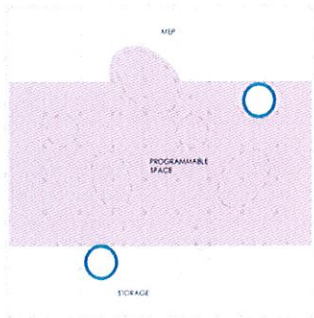
FULLY OPENS UP PENFIELD TO STUDENTS, LIGHT, STUDY AREAS

UBIQUITOUS INFORMATION COMMONS

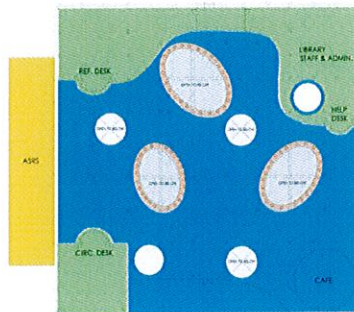
NO SECURE ZONE



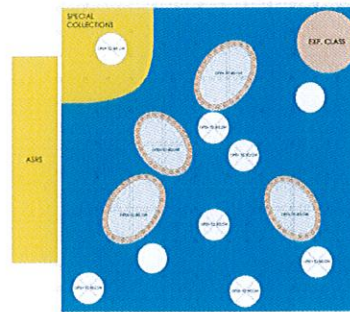
Create Ubiquitous Library Program



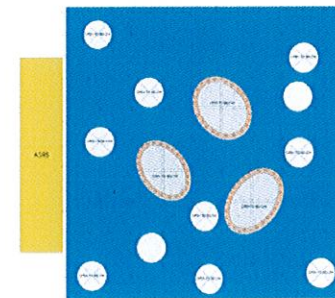
L



G

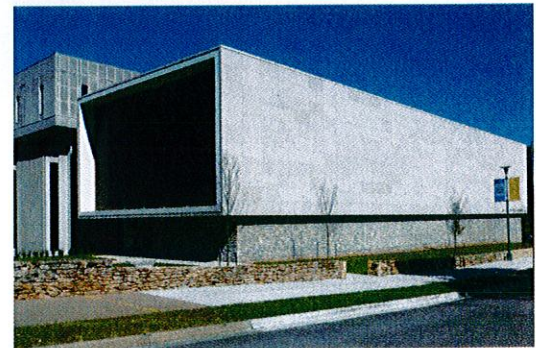
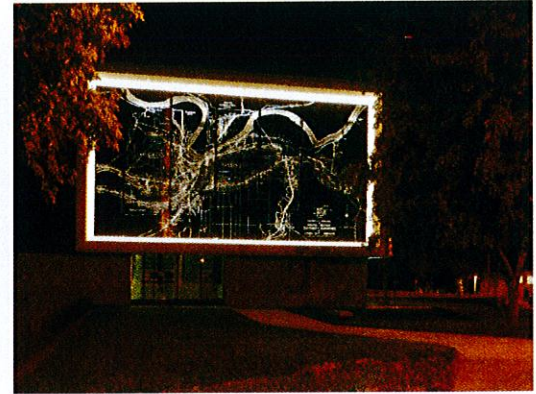
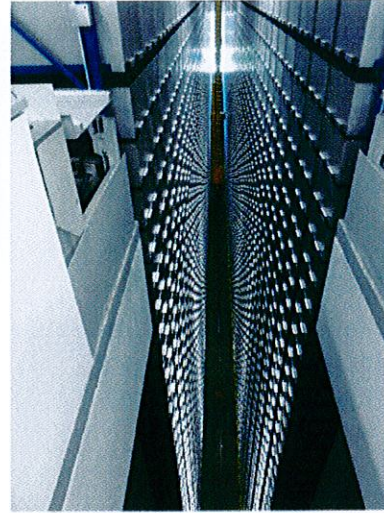


2



3

ASRS



UMKC = 1.2 MILLION VOLUMES

A PENFIELD ASRS COULD HOLD APPROX. 532, 800 VOLUMES

SIZE OF CURRENT PENFIELD COLLECTION: 570, 000 VOLUMES

Thank you
&
Discussion



