

DD Phase – Client Coordination Meeting – Finishes & Site

MCC Student Activity Space, SUNY Oswego

The following report was prepared by the Architect and will be assumed to be correct unless written exceptions are received within two weeks of the publication date, 10/03/17.

Meeting Date: October 03, 2017

Meeting Location: 201 MCC

HOLT #2016007

Attendees:

SUNY Oswego	Mitch Fields Scott DuBois Michael Lotito Holli Stone Earnest Washington Lori Cook Mark Dixon Barbara St. Michel Jennifer Wescott Tedra Marshall	mitch.fields@oswego.edu scott.dubois@oswego.edu michael.lotito@oswego.edu holli.stone@oswego.edu earnest.washington@oswego.edu lori.cook@oswego.edu mark.dixon@oswego.edu barbara.stmichel@oswego.edu jennifer.wescott@oswego.edu tedra.marshall@oswego.edu	
HOLT Architects	Quay Thompson Cate Blakemore Ryan Ball	agt@holt.com crb@holt.com rab@holt.com	607-273-7600
Appel Osborne	Katy Jacobs	kjacobs@appelosborne.com	315-312-6602

Discussion

Action

1. Meeting objective:
 - a. Review each space in terms of function and review finish options
 - b. Discuss site improvements and requirement for catering access and use of outdoor plaza space
2. Presentation (attached)
 - a. Gerflor Saga LVT flooring has been used in other campus buildings. Maintenance is familiar with manufacturer and product line. Cate/Ryan to investigate Gerflor LVT flooring
<http://www.gerflorusa.com/product-ranges/lvt.html> HOLT
3. Vestibule:
 - a. Change doors from single to double doors.
 - b. Wall paint should be a darker gray, but not as gray as event space
 - c. Walk-off mat with drain is preferred if connection to sanitary is nearby
4. Lobby:
 - a. Flooring should be a medium gray, quarry embossing
 - b. Columns to match walls
5. Event Space:
 - a. Change exterior doors to double doors.
 - b. Darker floor with homogenous tone/pattern, quarry embossing
6. Kitchen:
 - a. Change exterior and interior doors to double doors.
 - b. Add (2) 3-foot wall cabinets with doors
 - c. Counter: Stainless steel is preferred; no dishwasher
 - d. Power for hot boxes on separate circuits.
7. Event Toilet Rooms

- a. Omit door to toilet room corridor
 - b. Wall coverings difficult to maintain, omit
 - c. Ceramic floor tile and wall base, color can match corridor color
 - d. Full-height wall tile on wet wall, if budget allows. Tile should be something that has a contemporary, edgy aesthetic that speaks to both formal and dance party events.
 - e. Toilet Corridor: Consider adding graphic that covers entire wall
 - f. Add coat hooks to back of door
 - g. Add full-height mirror on side wall
 - h. Vanity mirror can be extended across entire back wall
 - i. Change rooms names to: *Toilet Room*.
 - j. Hardware: Provide push plate with key on exterior side; latch with lock interior side with closer
8. Coat Room: Consider omitting shelf above coat rod to prevent items from being stored in coat room. Shelf unit needs to be coordinated with existing piping.
9. Green Room
- a. Add power above counter or recessed countertop power/data
 - b. Add power to west wall between dressing room doors at 18" a.f.f.
 - c. No sink needed
 - d. Add blocking, power, data cable for wall-mounted TV at west wall.
10. Green Room Dressing: No comments offered
11. Green Room Toilets: Wait until MEP meeting to discuss shower control locations and adding second set of controls on end wall and if both will be designed for accessibility
12. 1st Floor: Corridor finishes to match existing; ceramic tile in shower rooms; Wall tile scope can be scaled back if needed to maintain budget
13. Site
- a. Use of Plaza Space: Can be used by students and also for specialized events
 - Add power for outdoor speakers/music: Discuss during AV meeting
 - b. Catering Kitchen is adjacent to plaza to allow for event staging of buffet and bar setup
 - c. 10-foot path access to all for truck access to catering kitchen and snow plowing along building
 - d. Built-ins (artwork bases & benches) should be kept away from sidewalk edges to allow for ease of sidewalk maintenance
 - e. Lighting: Ground lighting; pole lighting tends to be more expensive
 - f. Add Art/Sculpture Base: 6ft square or round concrete for student installation
 - g. Add bike rack mounted on concrete not grass
 - h. Benches: Wood (teak) or stone; removable with flush mounting hardware
 - i. Base Bid: Provide sidewalk to exterior doors to egress from basement spaces, should be open-ended at west end to allow for future connection of drive path
 - j. Alternate: Plaza Design

Respectfully Submitted by:

HOLT Architects, P.C.

Cate Blakemore, AIA, Project Architect

Prepared by: Cate Blakemore

Attachments: Presentation from 10/03/17

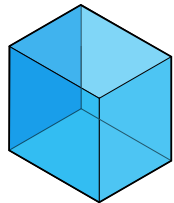
010 - EVENT SPACE

Neutral grey finishes create a blank canvas for individual event transformation. Uni-strut system provides frame work for custom lighting, projections, and hung-graphic displays.

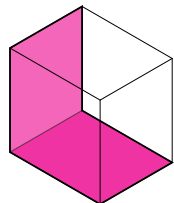
gerfloor
saga 2

014 - EVENT SPACE TOILET ROOMS

Vibrant color zones create unique and memorable experiences in toilet rooms without distracting from main event space.



full color enclosure



wrapping feature wall

CORRIDOR

Event space finishes extend into this transitional space. Low lighting provides for dramatic transition into vibrant toilet rooms.

double doors

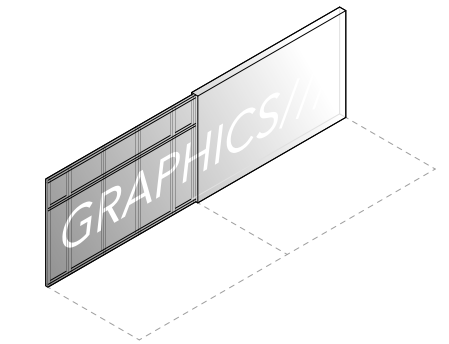
wind break if
budget allows

sidewalk with curb cut
connecting to parking

switch to
double doors

002 - ENTRY LOBBY

Clean, open and airy finishes create a fresh entry point into the building. The lighter hues of finishes contrast the neighboring event space and provide a neutral transition to the warmth of the dressing room.



015 - GREEN ROOM + DRESSING

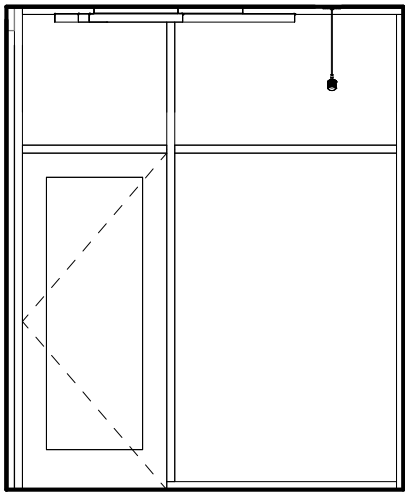
The green room is designed to be cozy and contemporary with feature accent wall and warmer finish palate.

- — — Proposed Graphic Zones
- Event Circulation
- Campus Circulation

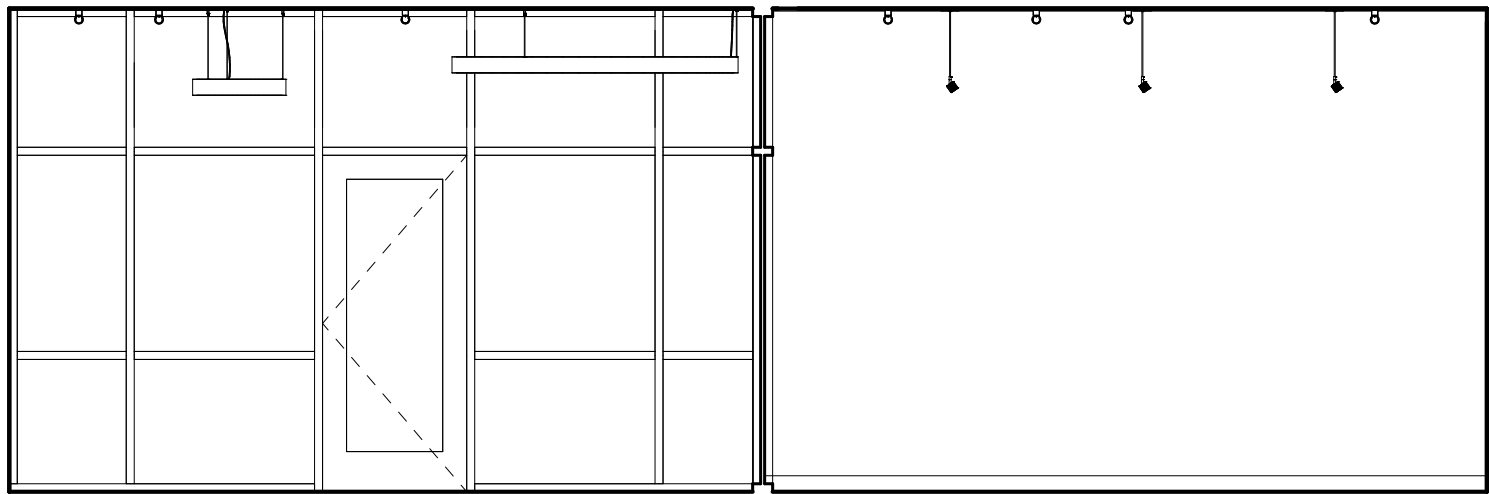
ENTRANCE VESTIBULE 001



2 VESTIBULE - 001 - EAST
1/4" = 1'-0"

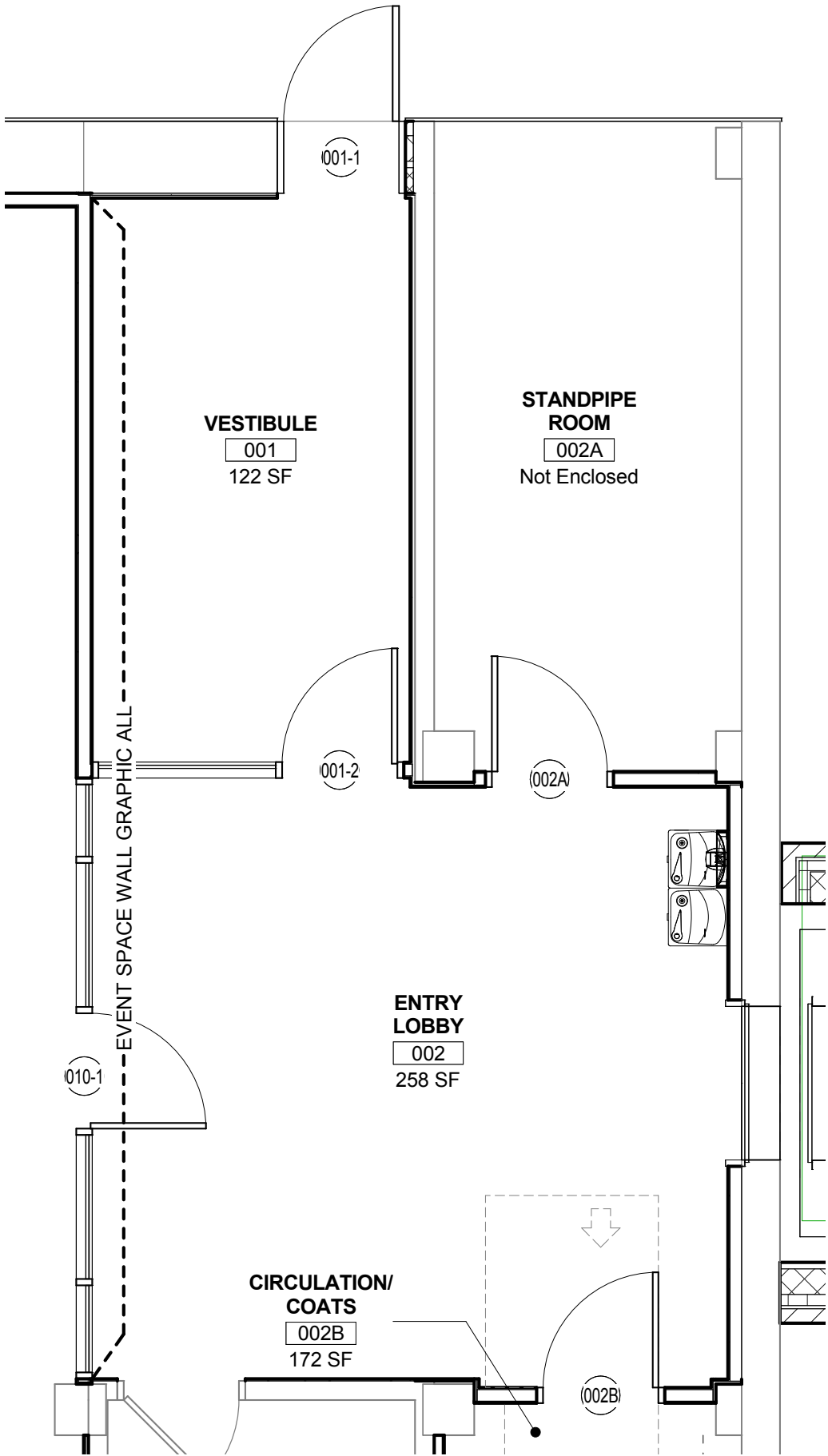


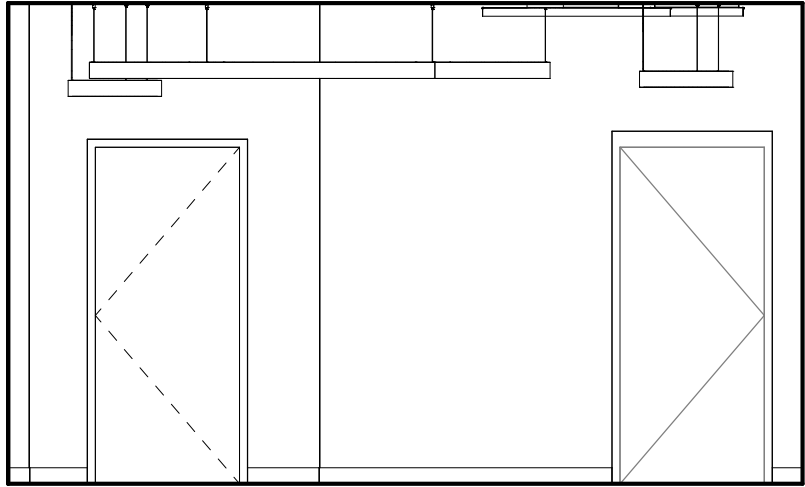
4 VESTIBULE - 001 - NORTH
1/4" = 1'-0"



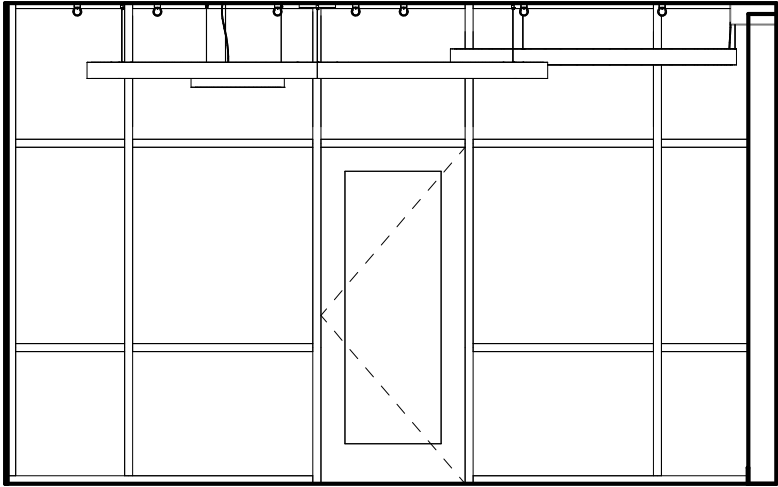
3 VESTIBULE - 001 - WEST
1/4" = 1'-0"

1 ENTRANCE VESTIBULE 001
1/4" = 1'-0"





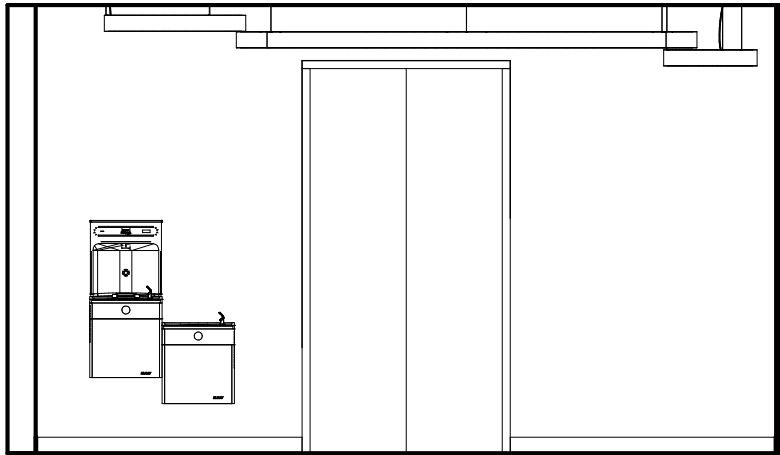
2 ENTRY LOBBY - 002 - SOUTH
1/4" = 1'-0"



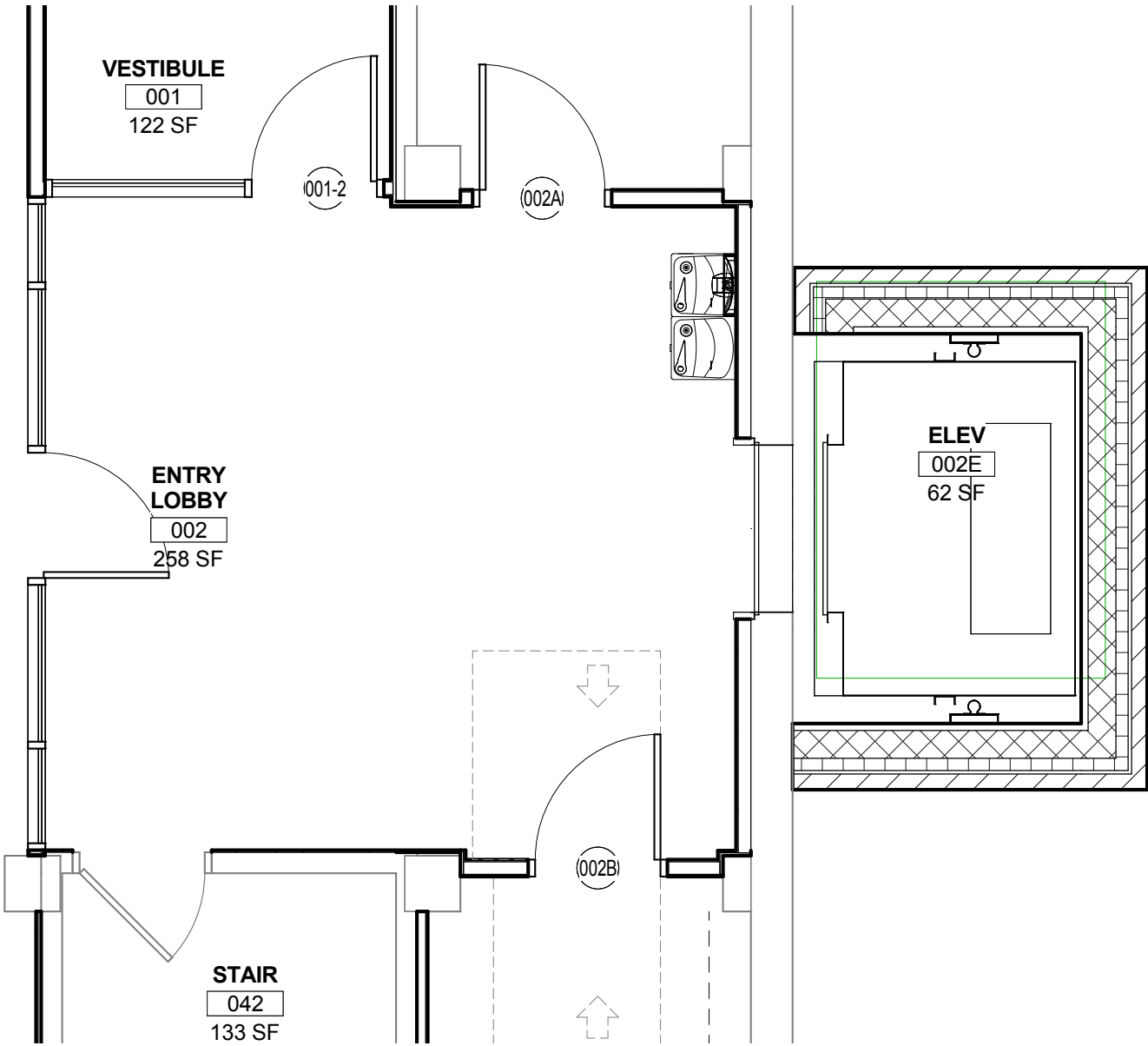
5 ENTRY LOBBY - 002 - WEST
1/4" = 1'-0"



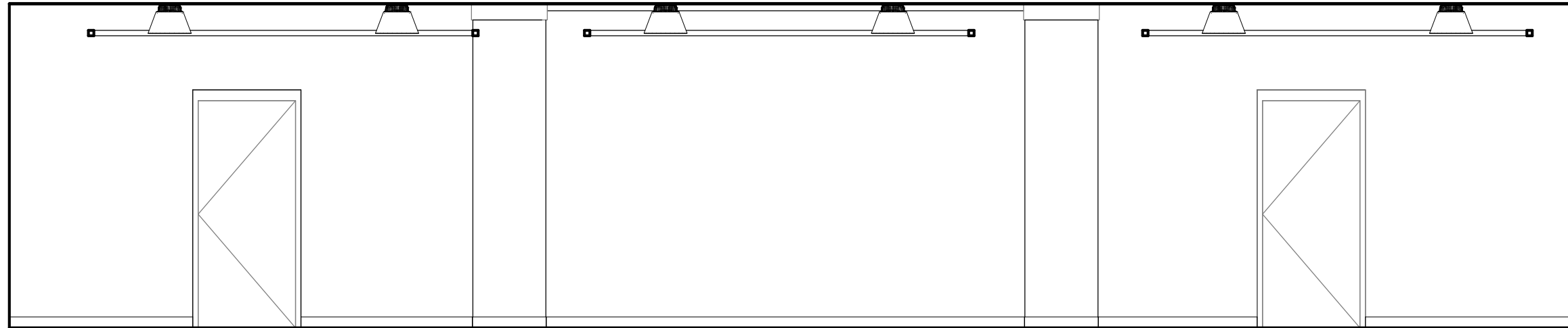
3 ENTRY LOBBY - 002 - NORTH
1/4" = 1'-0"



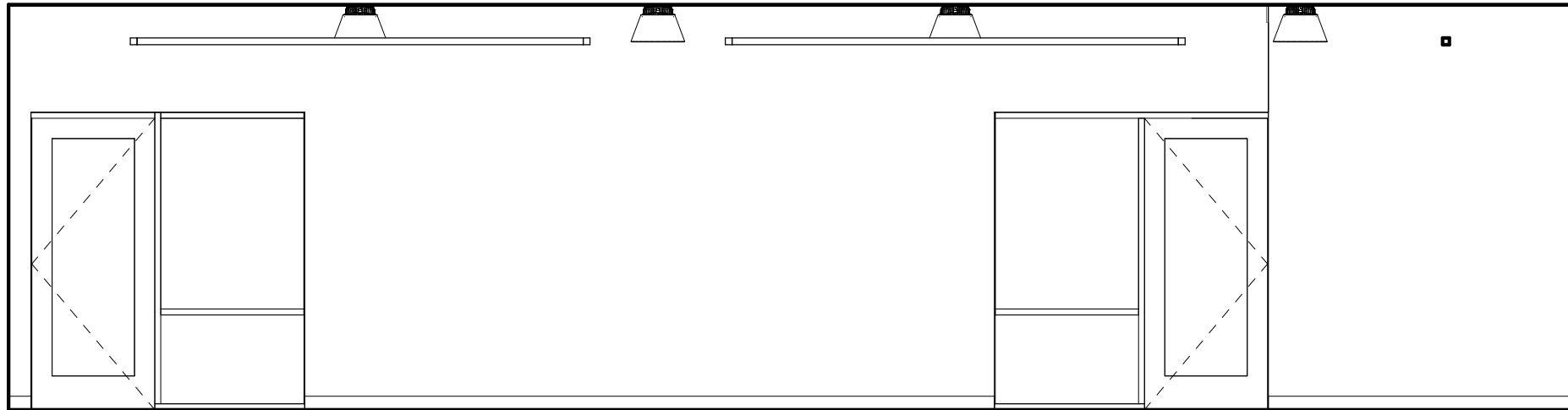
4 ENTRY LOBBY - 002
1/4" = 1'-0"



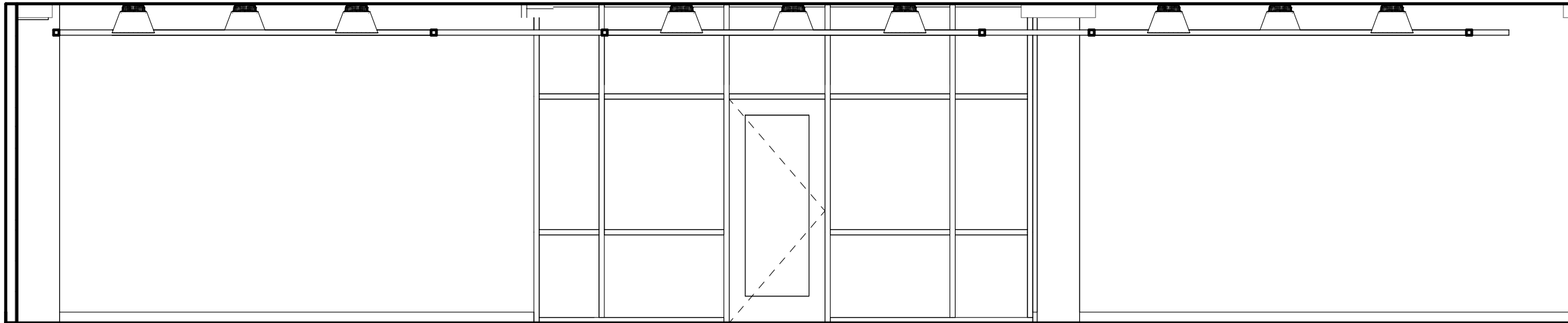
1 ENTRY VESTIBULE 002
1/4" = 1'-0"



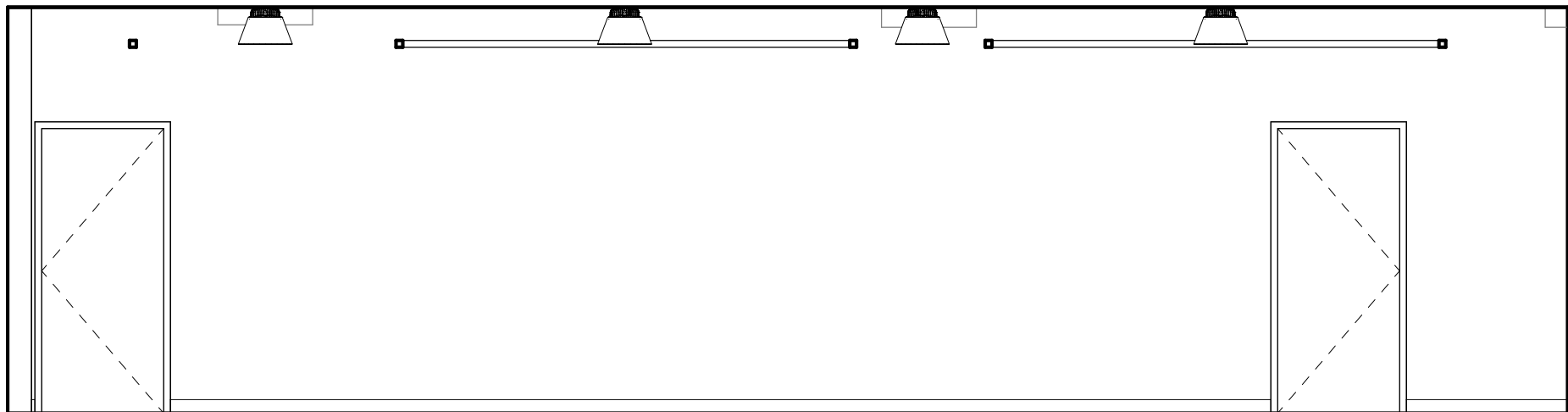
3 EVENT SPACE - 010 - WEST
1/4" = 1'-0"



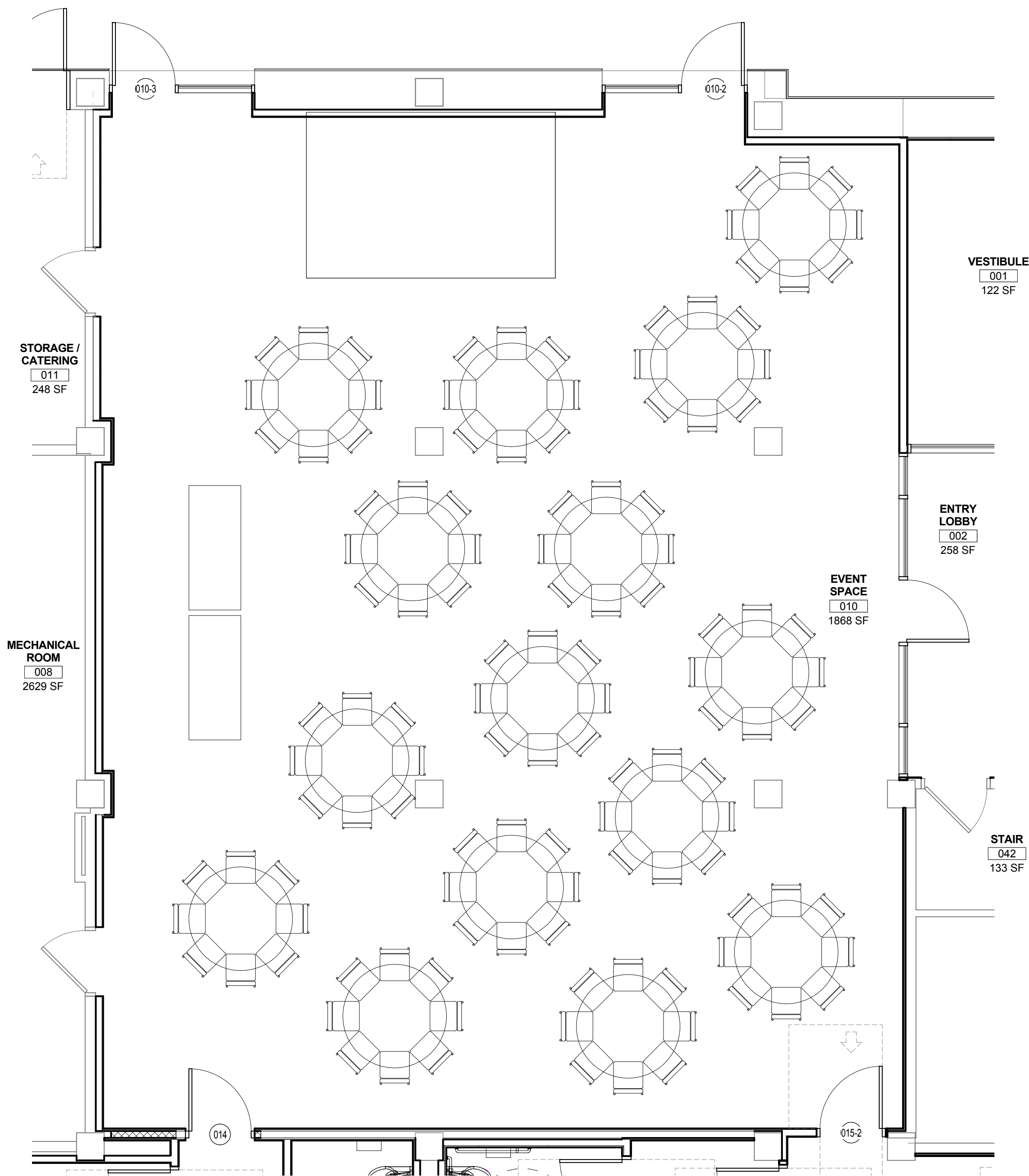
6 EVENT SPACE - 010 - NORTH
1/4" = 1'-0"



5 EVENT SPACE - 010 - EAST
1/4" = 1'-0"

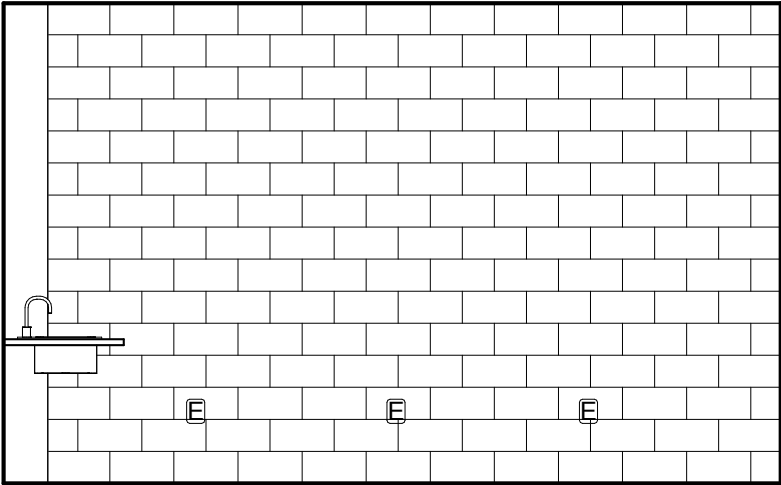


4 EVENT SPACE - 010 - SOUTH
1/4" = 1'-0"

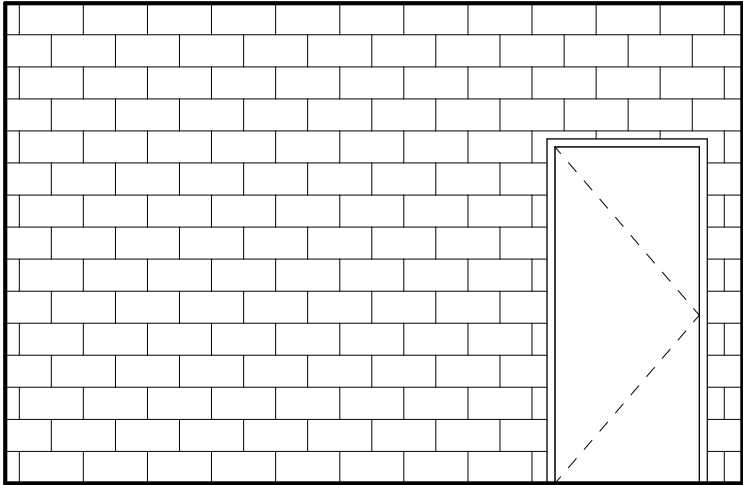


1 EVENT SPACE - 010
1/4" = 1'-0"

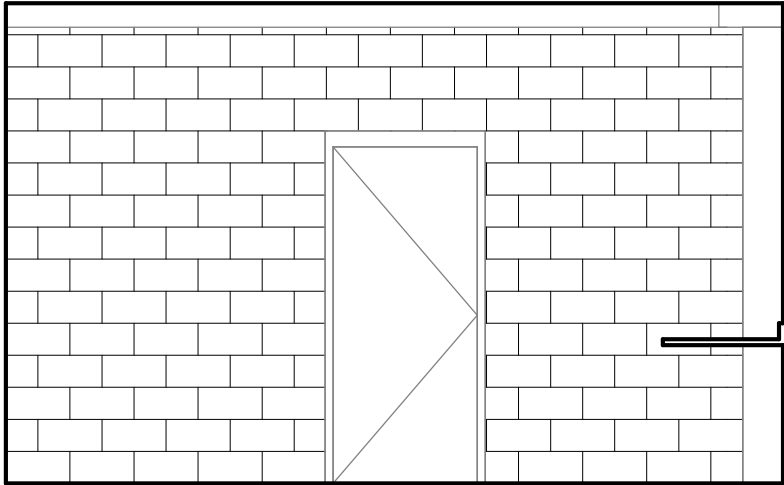
STORAGE / CATERING



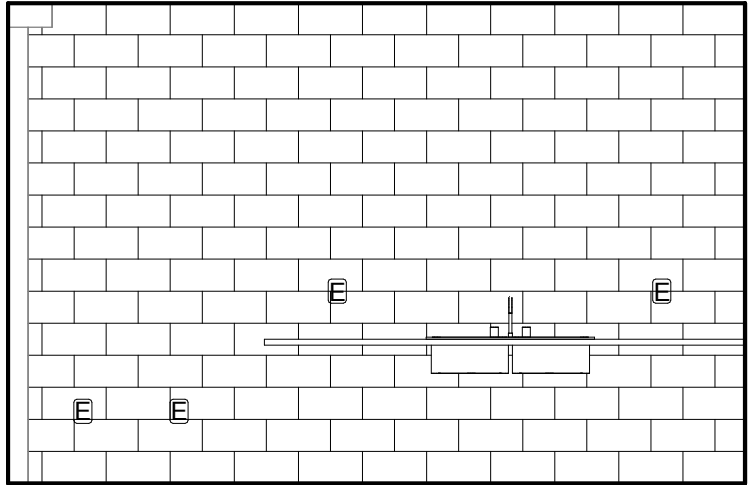
2 STORAGE / CATERING - 011 - WEST
1/4" = 1'-0"



3 STORAGE / CATERING - 011 - NORTH
1/4" = 1'-0"



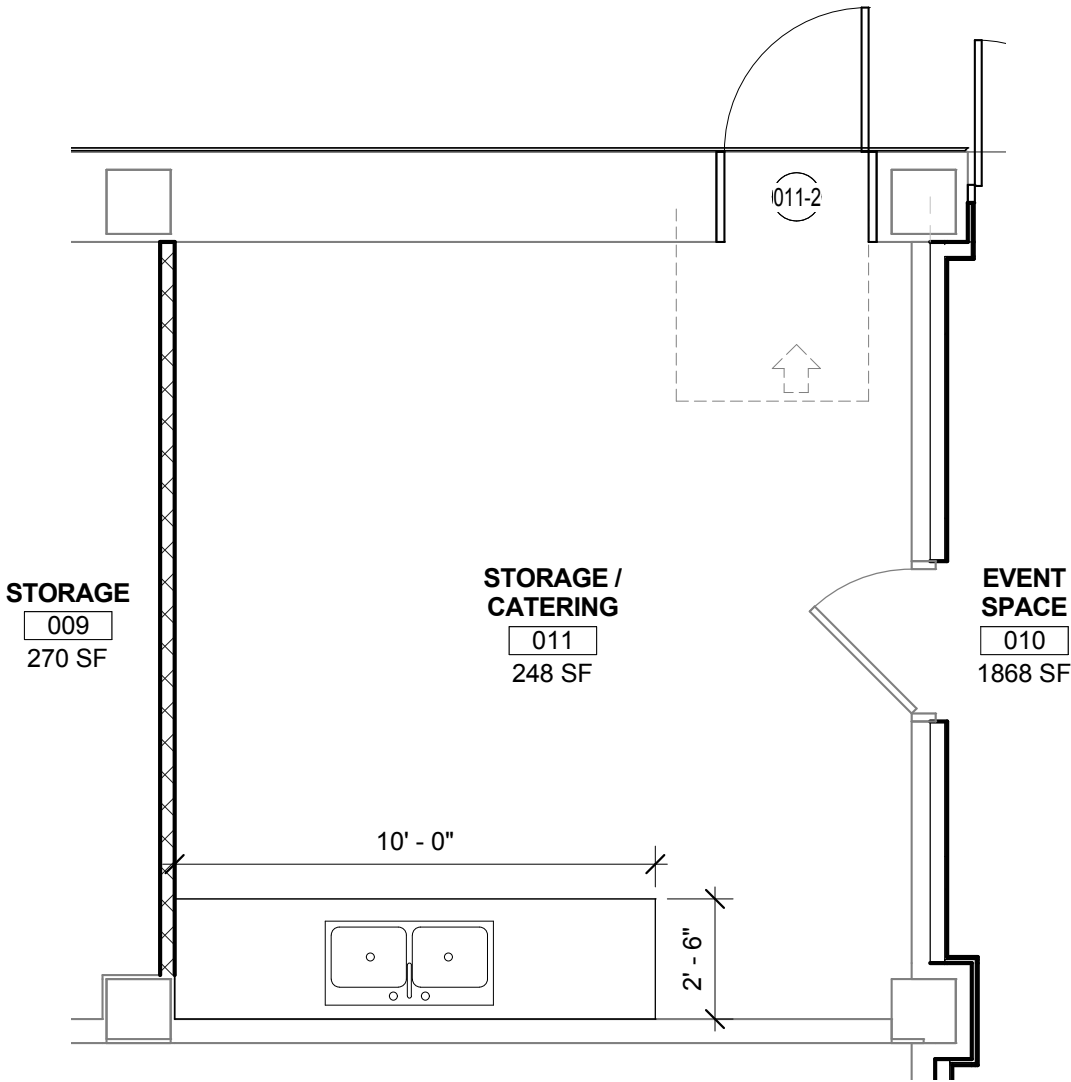
4 STORAGE / CATERING - 011 - EAST
1/4" = 1'-0"



5 STORAGE / CATERING - 011 - SOUTH
1/4" = 1'-0"

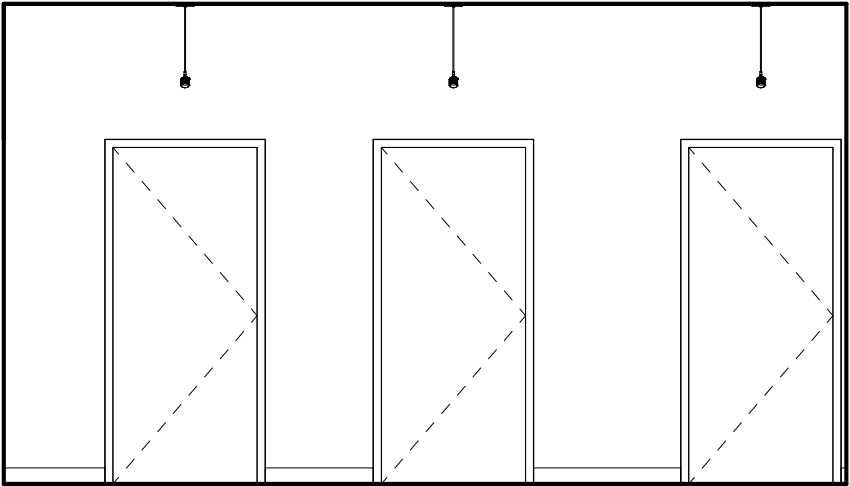


Image is for illustrative purposes only © F.E.D.

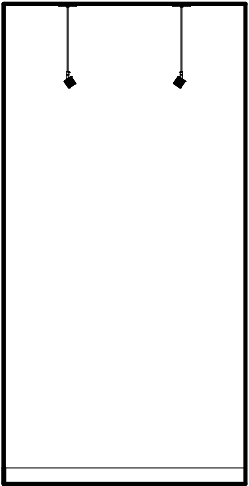


1 STORAGE / CATERING - 011
1/4" = 1'-0"

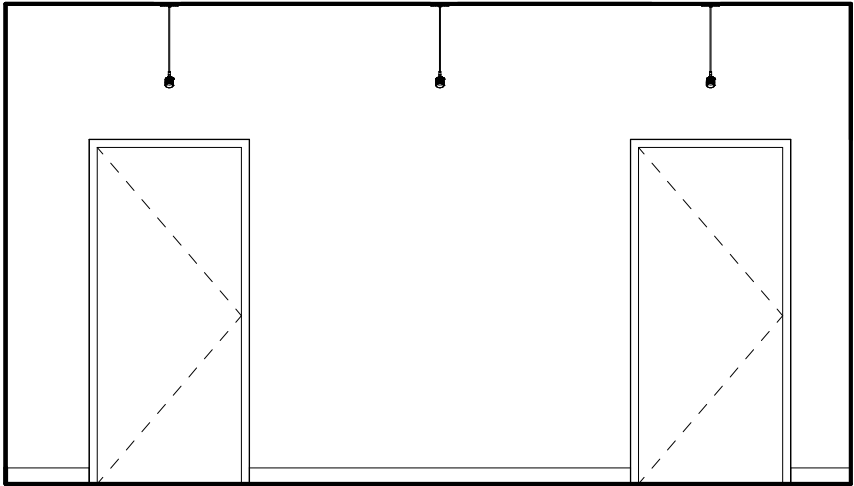
TYPICAL EVENT SPACE TOILET ROOMS



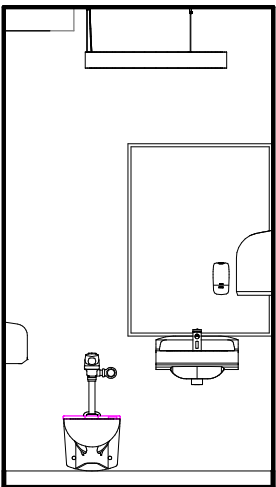
2 CORRIDOR - 014 - EAST
1/4" = 1'-0"



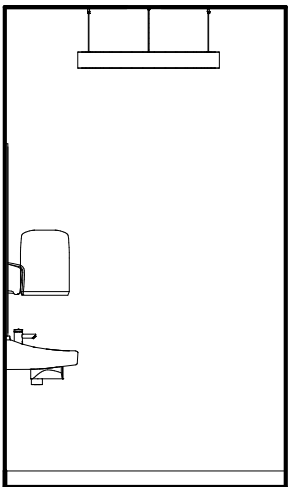
3 CORRIDOR - 014 - SOUTH
1/4" = 1'-0"



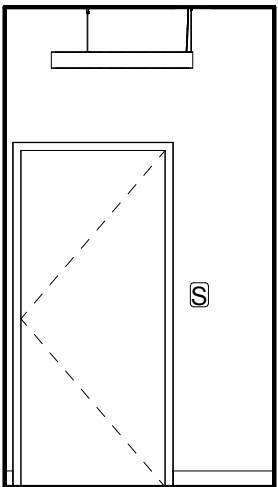
4 CORRIDOR - 014 - WEST
1/4" = 1'-0"



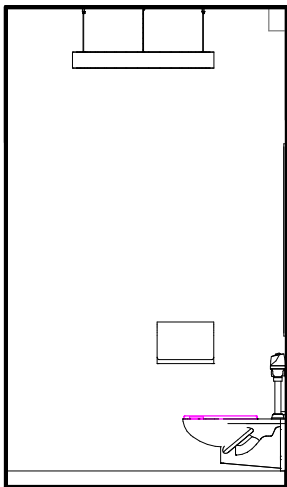
5 TOILET - EAST, TYP
1/4" = 1'-0"



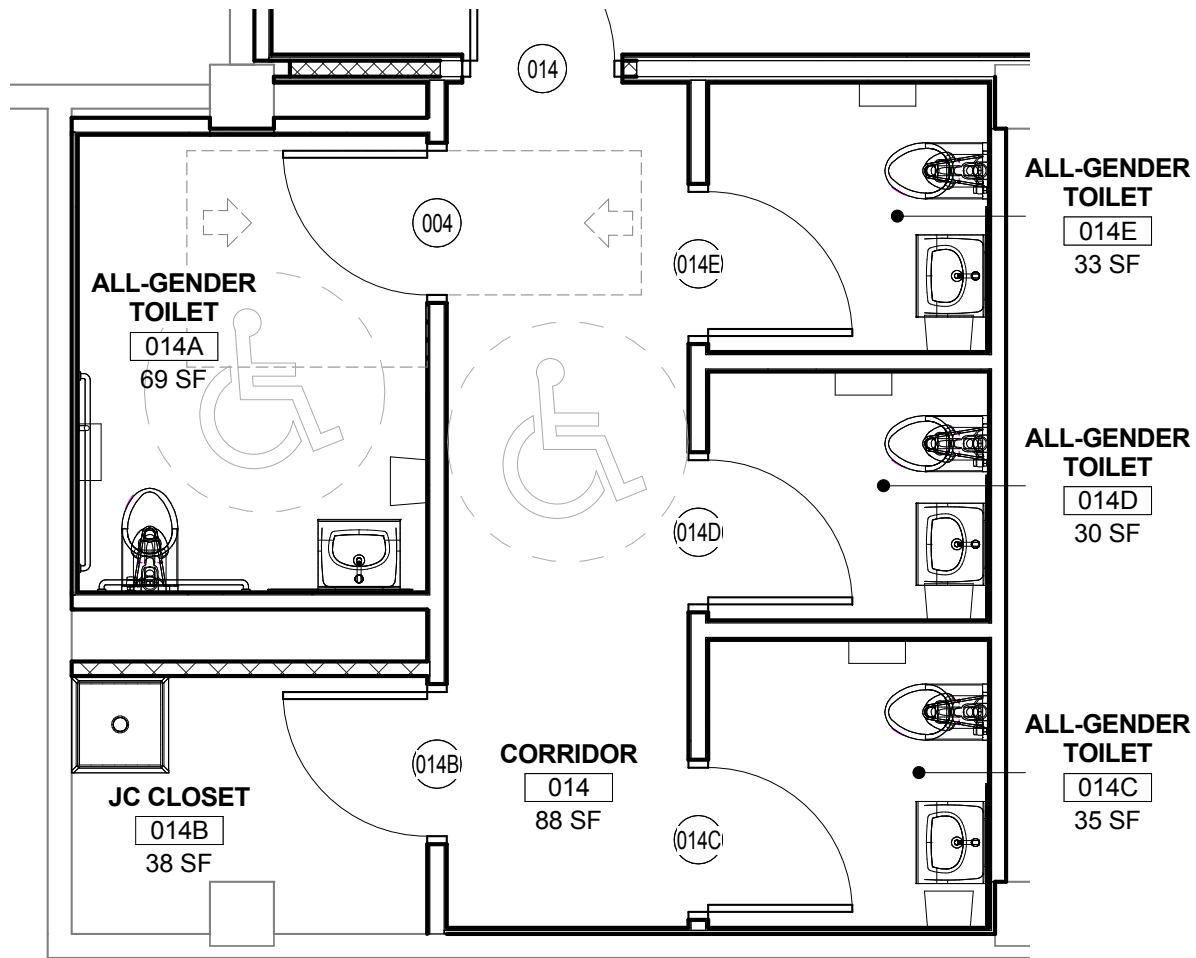
6 TOILET - SOUTH, TYP
1/4" = 1'-0"



7 TOILET - WEST, TYP
1/4" = 1'-0"



8 TOILET - NORTH, TYP
1/4" = 1'-0"



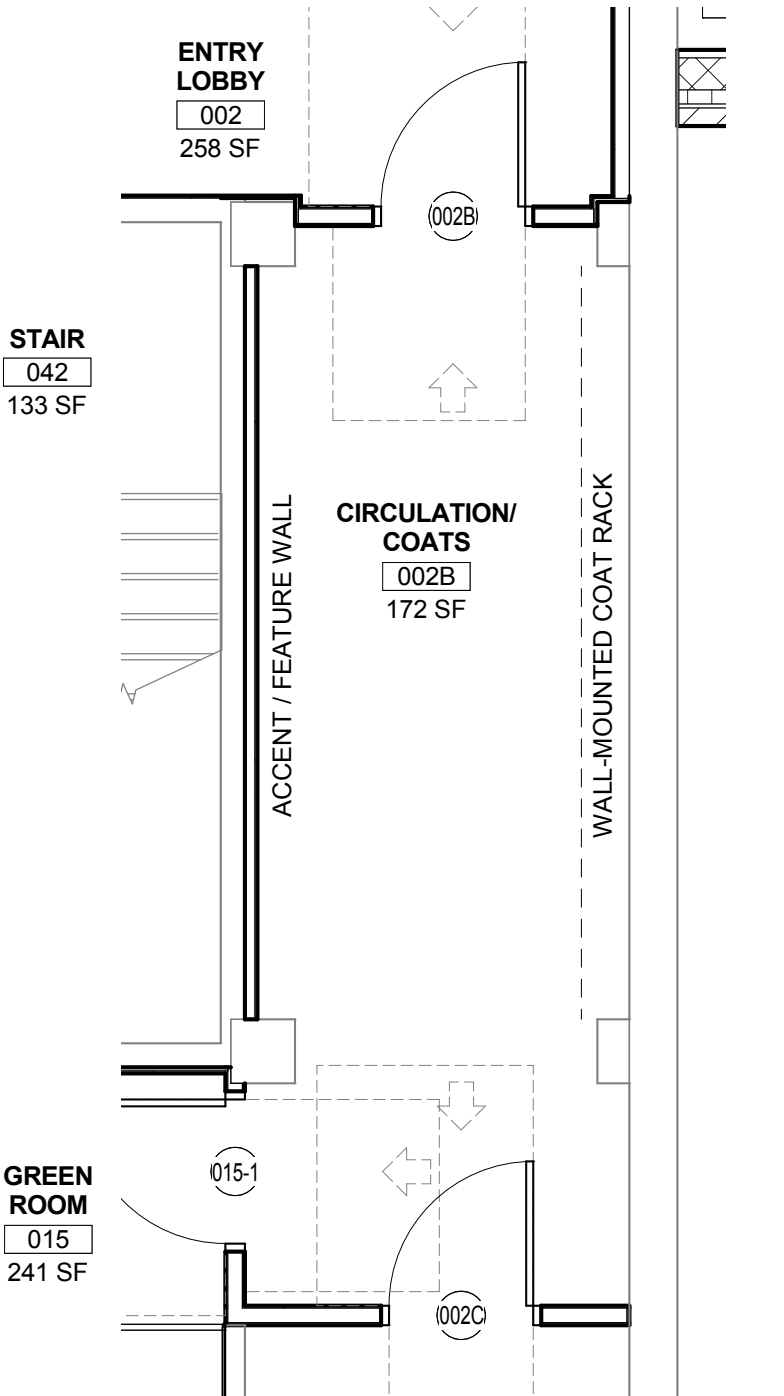
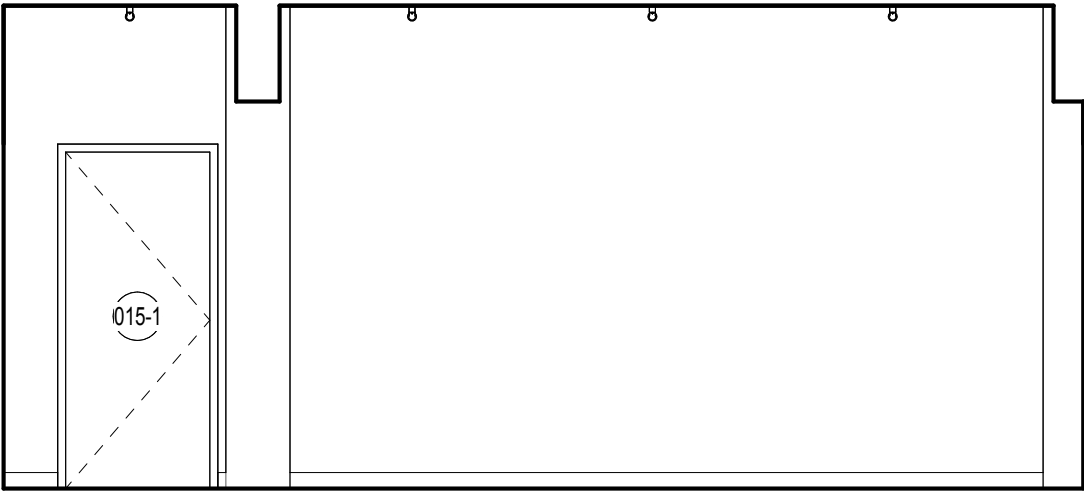
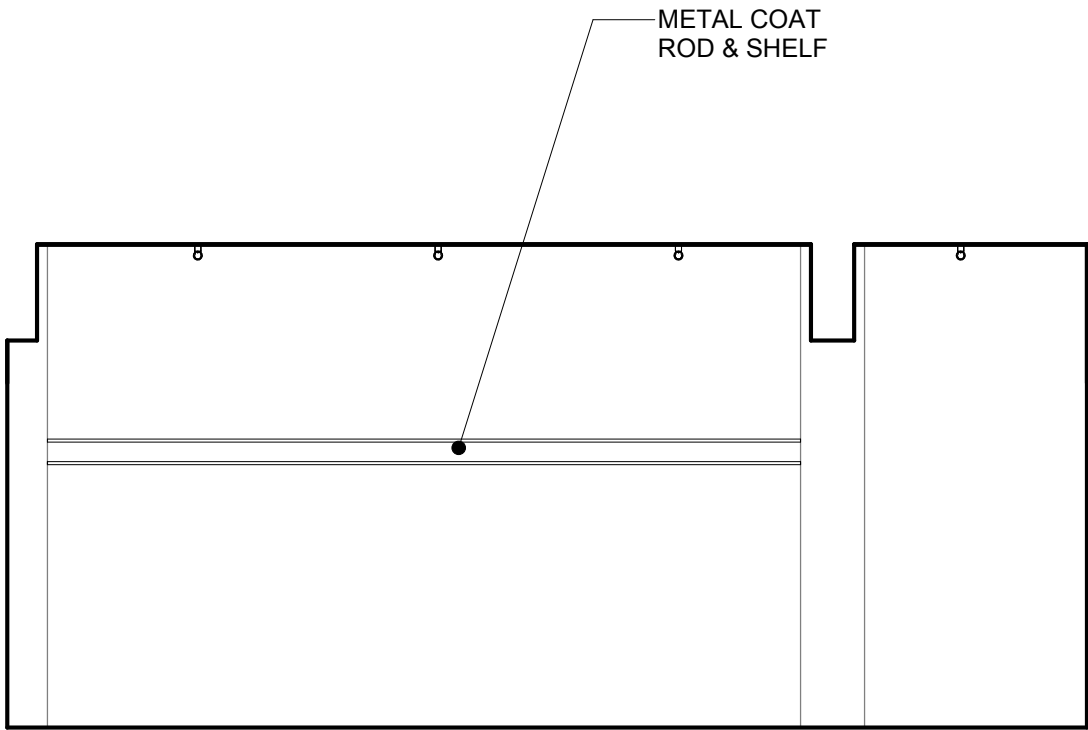
1 EVENT SPACE TOILET ROOMS
1/4" = 1'-0"



COAT ROOM



TYPICAL COAT RACK

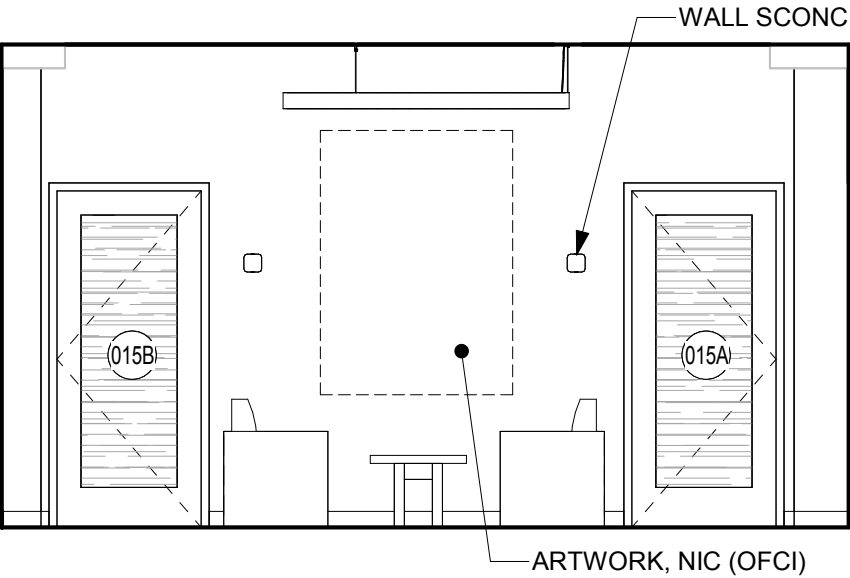


3 CIRCULATION / COATS - 002B - EAST
1/4" = 1'-0"

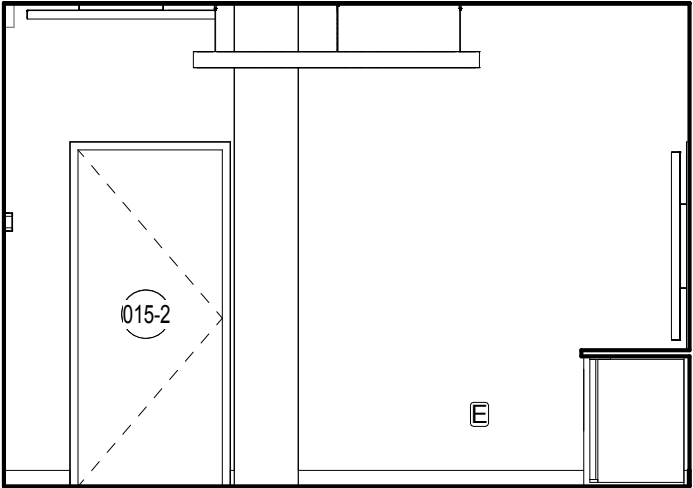
2 CIRCULATION / COATS - 002B - WEST
1/4" = 1'-0"

1 CIRCULATION / COATS 002B
1/4" = 1'-0"

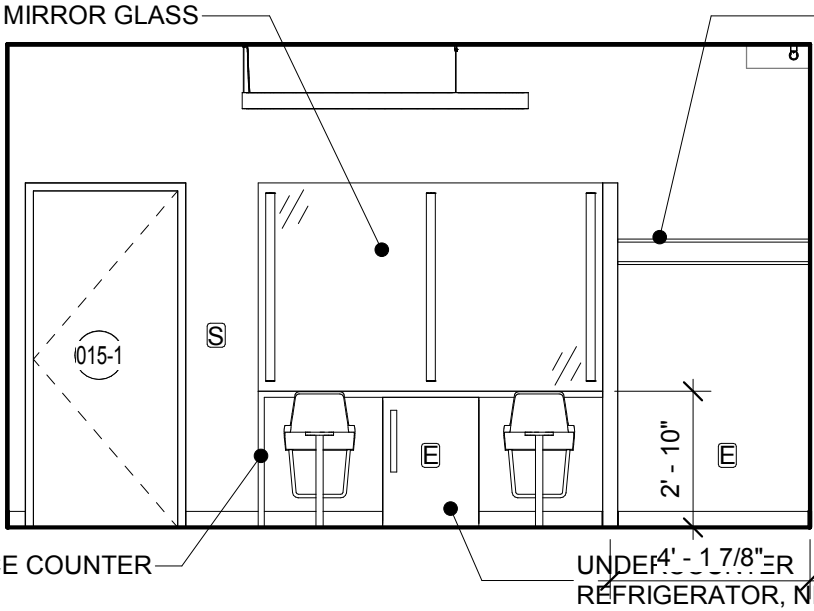
GREEN ROOM



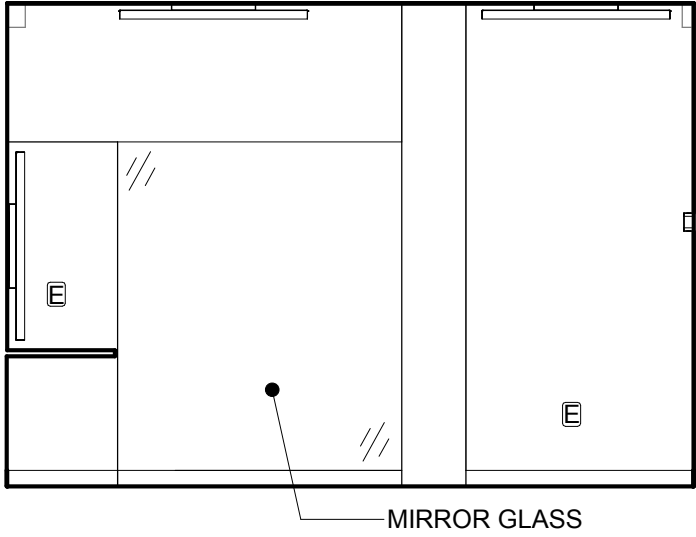
2 GREEN ROOM - 015 - WEST
1/4" = 1'-0"



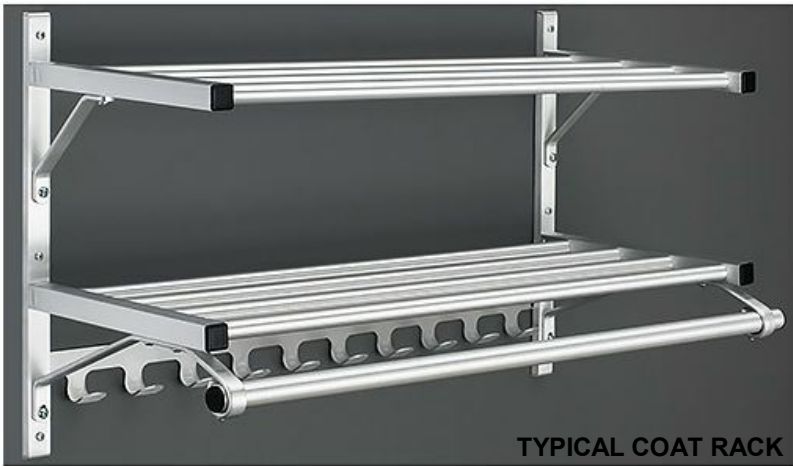
3 GREEN ROOM - 015 - NORTH
1/4" = 1'-0"



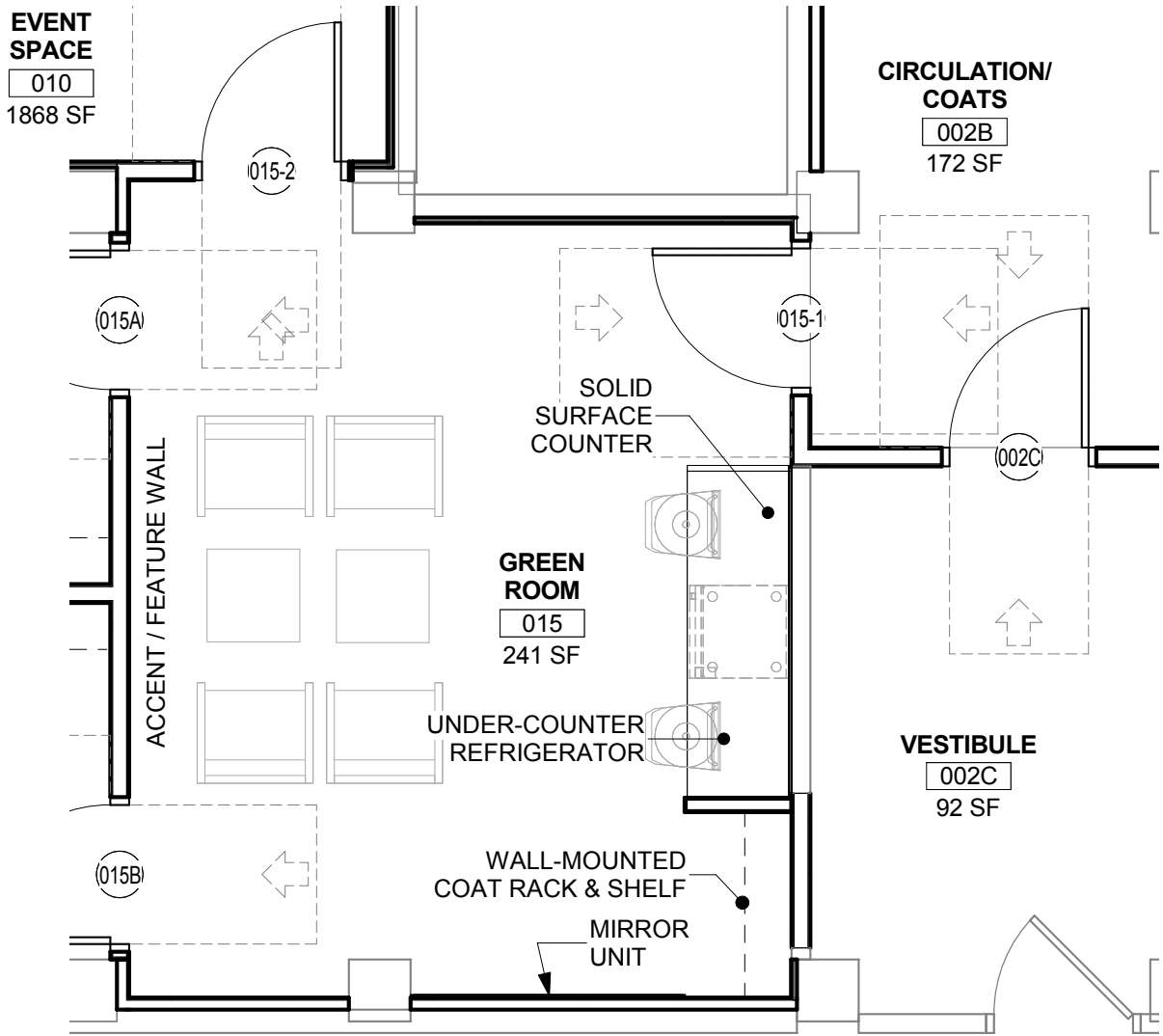
4 GREEN ROOM - 015 - EAST
1/4" = 1'-0"



5 GREEN ROOM - 015 - SOUTH
1/4" = 1'-0"



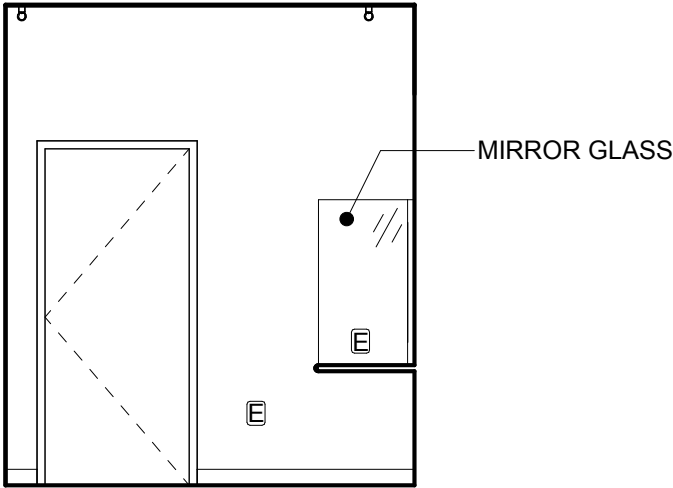
TYPICAL COAT RACK



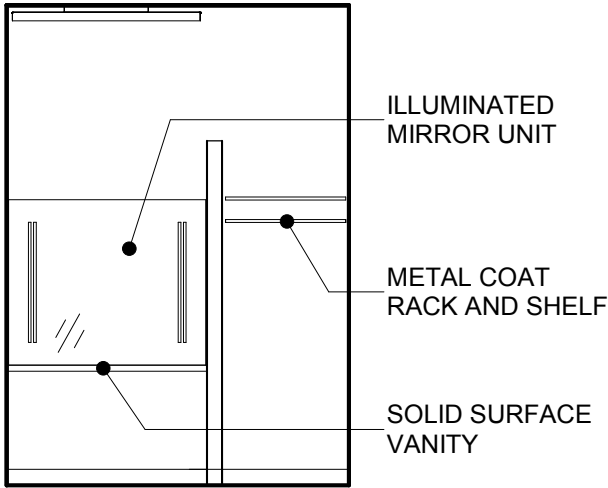
1 GREEN ROOM - 015
1/4" = 1'-0"



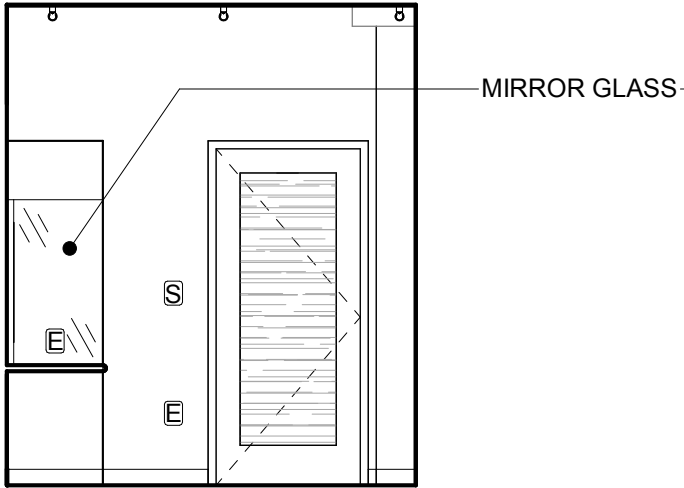
GREEN ROOM - DRESSING - TYPICAL



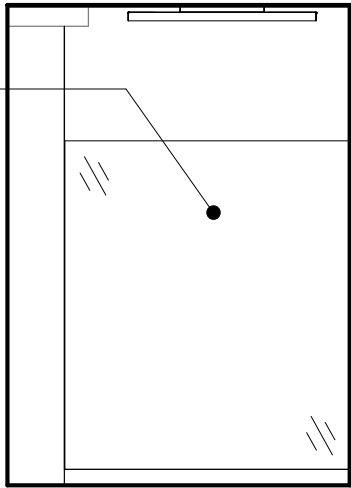
2 DRESSING ROOM - 015B - WEST



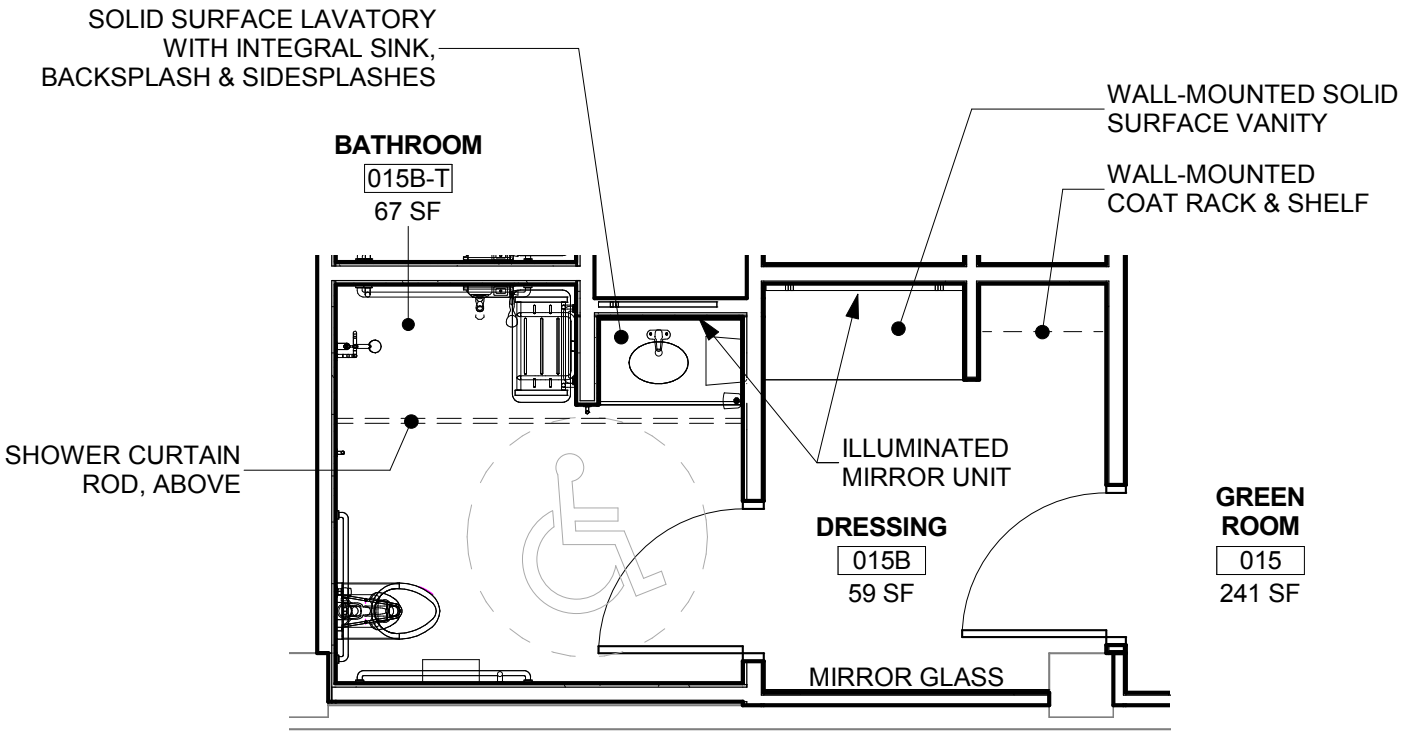
3 DRESSING ROOM - 015B - NORTH



4 DRESSING ROOM - 015B - EAST



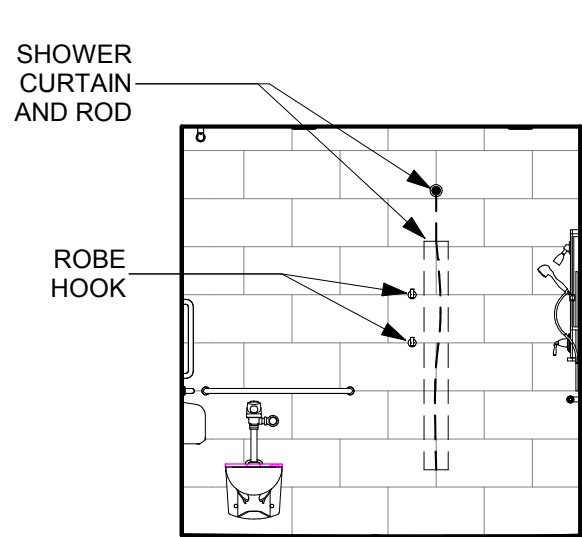
5 DRESSING ROOM - 015B - SOUTH



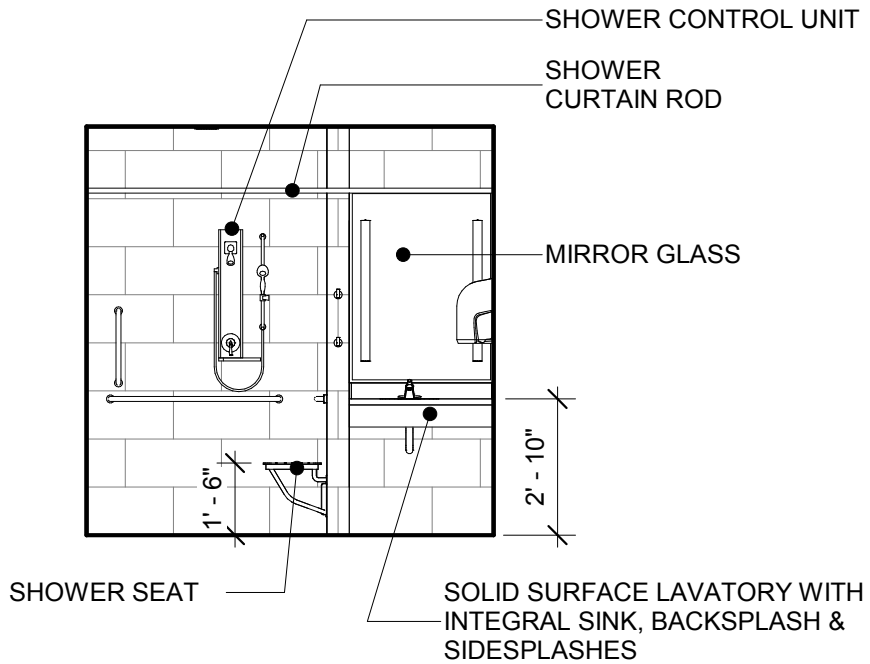
1 TYPICAL GREEN ROOM - DRESSING
1/4" = 1'-0"



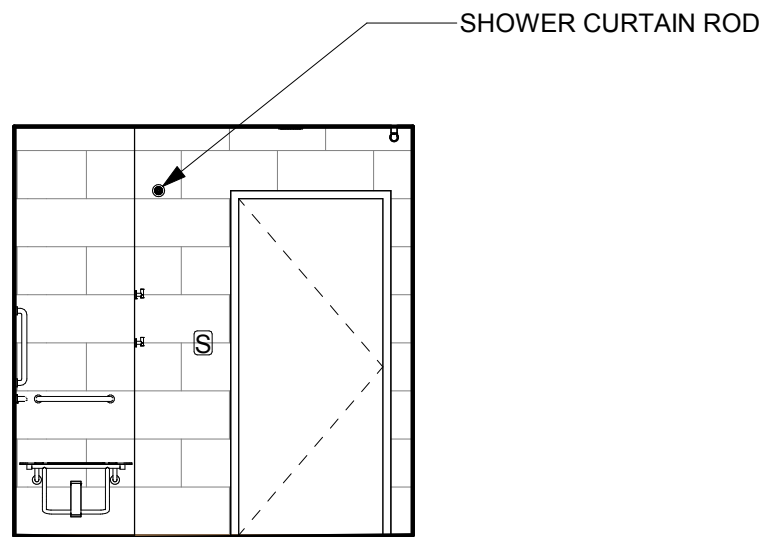
GREEN ROOM - TOILET - TYPICAL



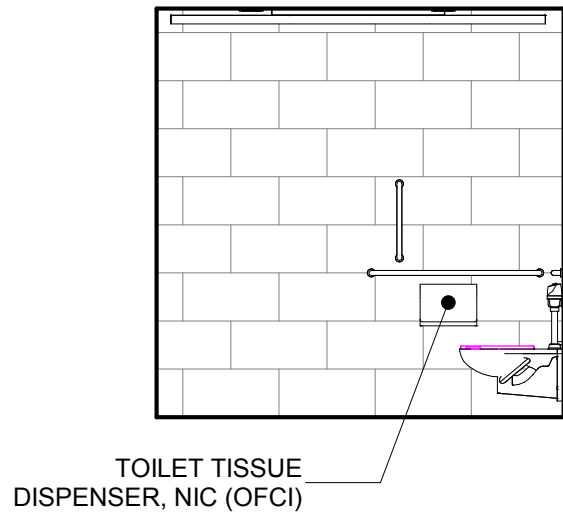
2 TOILET - 015B-T - WEST
1/4" = 1'-0"



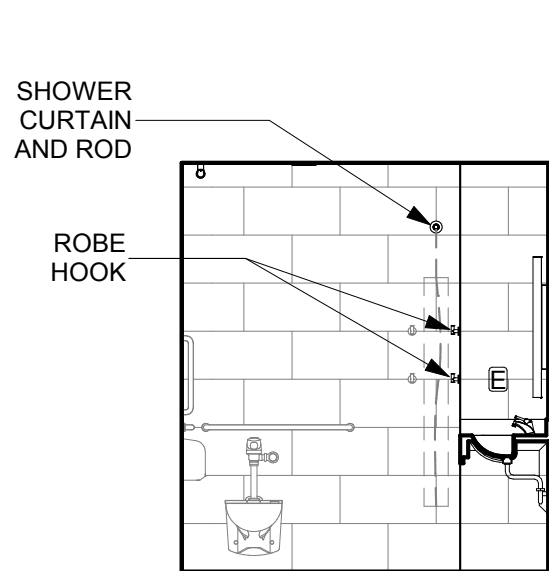
3 TOILET - 015B-T - NORTH
1/4" = 1'-0"



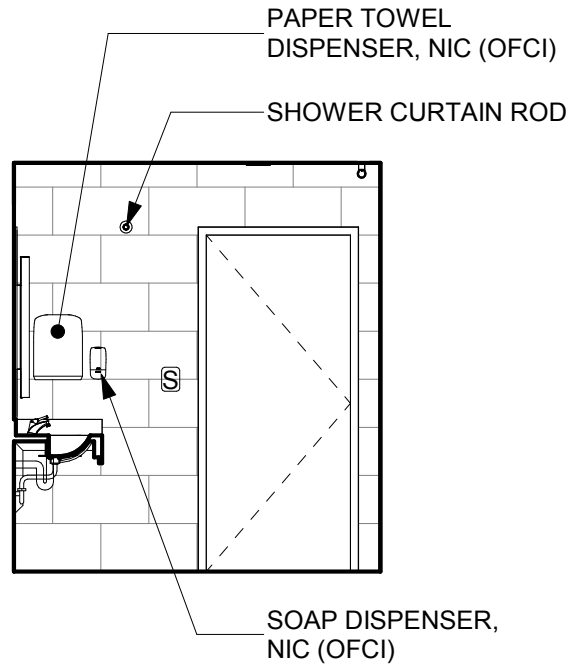
4 TOILET - 015B-T - EAST
1/4" = 1'-0"



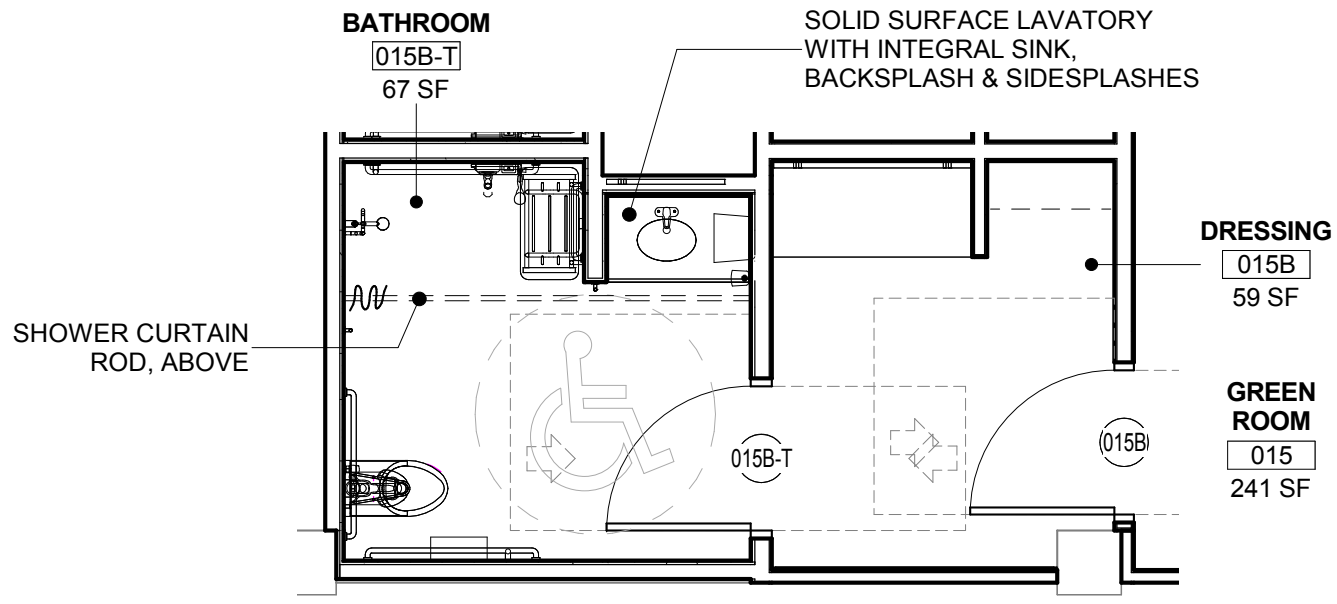
5 TOILET - 015B-T - SOUTH
1/4" = 1'-0"



6 TOILET - 015B-T - WEST - VANITY
1/4" = 1'-0"

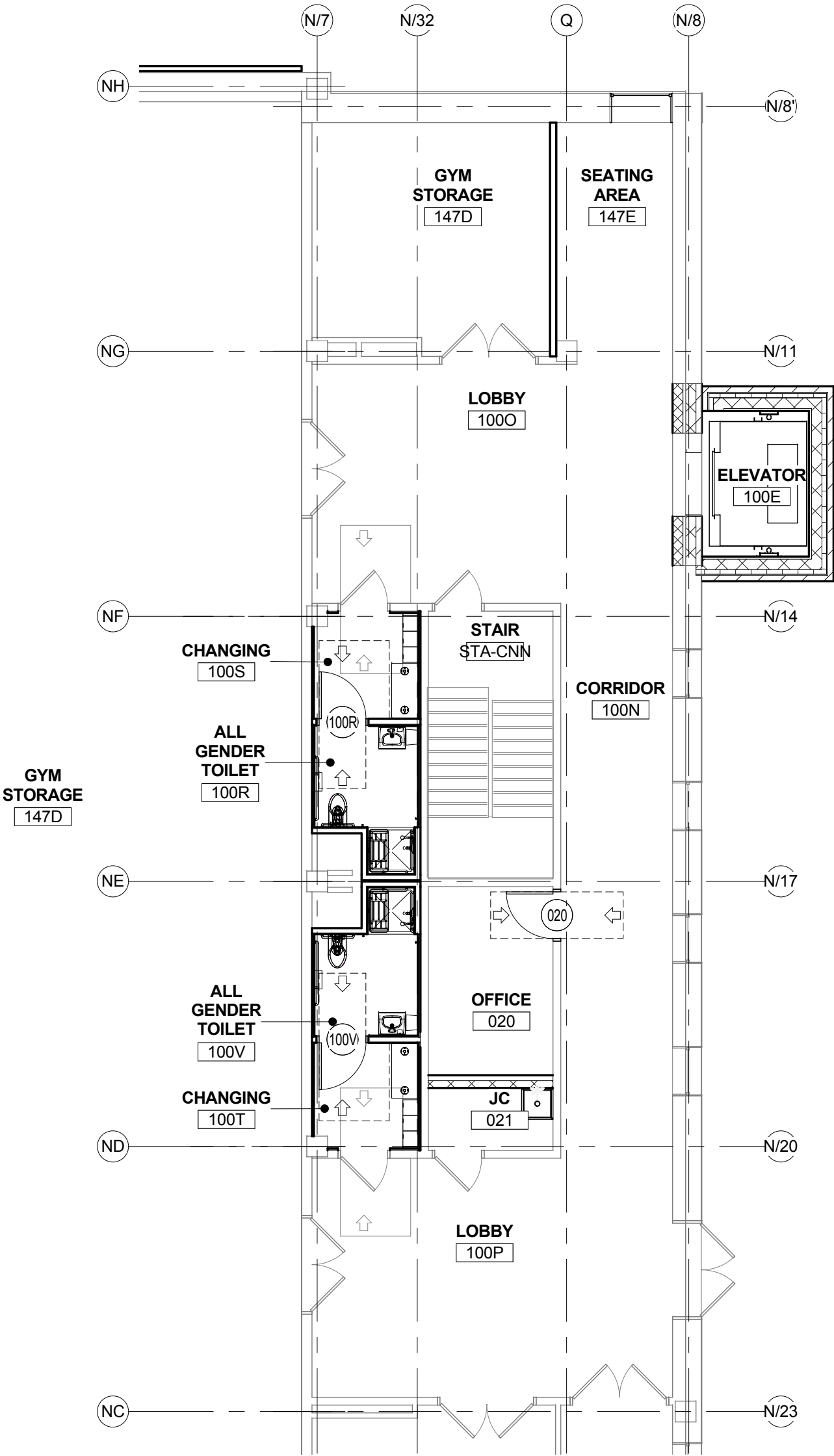


7 TOILET - 015B-T - EAST - VANITY
1/4" = 1'-0"



1 TYPICAL GREEN ROOM - TOILET
1/4" = 1'-0"





1 PARTIAL FIRST FLOOR FURNITURE PLAN (ADD-ADLTERNATE 01)
1/8" = 1'-0"



FIRST FLOOR IMPROVEMENTS