

Graduate School Distribution

New York State		Out-of-State	
<p>Capital (4%)¹ Albany College of Pharmacy and Health Sciences Albany Law School SUNY Albany</p> <p>Central (51%)¹ LeMoyné College SUNY Cortland SUNY Oswego SUNY Upstate Medical University Syracuse University</p> <p>Finger Lakes (7%)¹ Nazareth College Rochester Institute of Technology St. John Fisher College SUNY Brockport University of Rochester</p> <p>Hudson Valley (2%)¹ College of New Rochelle Marist College</p> <p>Long Island (6%)¹ Adelphi University Long Island University St. Joseph's College SUNY Stony Brook Touro College</p> <p>Mohawk Valley (3%)¹ Utica College</p>	<p>New York City (15%)¹ Columbia University CUNY Baruch College CUNY Hunter College CUNY John Jay College of Criminal Justice Fashion Institute of Technology Fordham University New York Chiropractic College New York Institute of Art and Design New York Institute of Technology New York University Pace University Queens College St. John's University</p> <p>North Country (2%)¹ Clarkson University</p> <p>Southern Tier (3%)¹ Keuka College SUNY Binghamton</p> <p>Western (7%)¹ Niagara University St. Bonaventure University SUNY Buffalo State College SUNY University at Buffalo</p>	<p>Northeast (32%)² <i>Does not include NYS distribution</i> Brandeis University Clarion University Commonwealth Medical College Drexel University East Stroudsburg University Emerson College La Salle University Massachusetts College of Pharmacy and Health Sciences Northeastern University Pennsylvania State University Quinnipiac University Rhode Island College Sacred Heart University Simmons College University of Connecticut Vermont Law School</p> <p>South (16%)² American Military University Chicago School of Professional Psychology Duke University Georgetown University Law Center Gulf Academy of America Morgan State University University of North Carolina University of South Florida Virginia Polytech</p>	<p>Midwest (16%)² Ball State University Case Western Reserve University Franklin University Kansas State University Ohio State University University of Nebraska University of Wisconsin Western Michigan University</p> <p>West (16%)² Arizona State University Cochise College Oregon State University University of Arizona University of California University of Idaho University of Natural Medicine University of Southern California University of Washington</p> <p>Abroad (5%)² Middlesex University Ross University School of Veterinary Medicine University of Strathclyde</p> <p>Online (15%)² Arizona University Arkansas State Liberty University University of Miami Walden University</p>

¹ THE % OF GRADUATES ATTENDING GRADUATE SCHOOL IN NEW YORK STATE

² THE % OF GRADUATES ATTENDING GRADUATE SCHOOL OUT-OF-STATE

Sample of Graduate Schools Visiting the SUNY Oswego Campus

Adelphi University	Drexel University	Palmer College of Chiropractic	SUNY New Paltz
Albany Law School	Emerson College	Quinnipiac University	SUNY Oneonta
Alfred University	Fordham University	Roberts Wesleyan College	Syracuse University
American University	Hofstra University	Rochester Institute of Technology	The College of Saint Rose
Baruch College	John Jay College of Criminal Justice	Roger Williams University	The Sage Colleges
Bentley University	Long Island University	Ross University School of Medicine	The University of Tampa
Boston University	Marist College	Simmons College	Touro College
Canisius College	Massachusetts College of Pharmacy and Health Sciences	St. John Fisher College	University at Buffalo
Castleton University	Mercy College	St. John's University	University of New Haven
Clarkson University	Molloy College	SUNY Binghamton	University of Rochester
Columbia University	Molloy College	SUNY Brockport	Vermont Law School
CUNY Graduate School of Journalism	Nazareth College	SUNY Buffalo	Western New England University School of Law
D'Youville College	New York Institute of Technology	SUNY Cortland	
Daemen College	Niagara University	SUNY Geneseo	
	Pace University		



OFFICE OF CAREER SERVICES

145 Marano Campus Center • Oswego, New York 13126 • 315.312.2255 • oswego.edu/careerservices

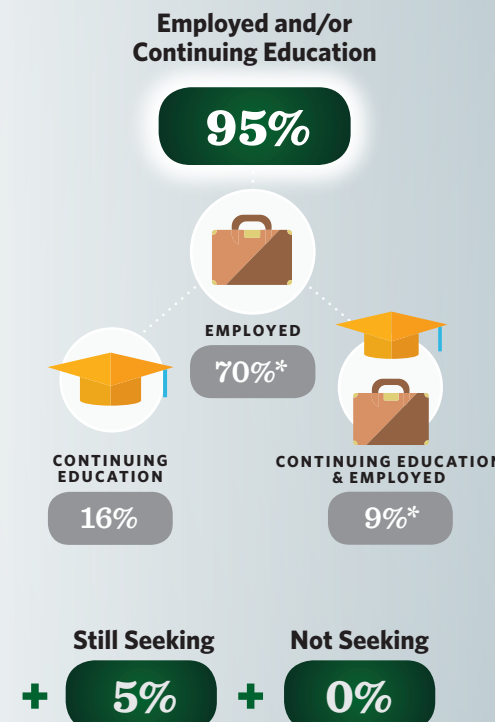


SUNY Oswego Class of 2016 Graduate Report

Employer highlights, graduate & professional study data, geographic distribution, alumni recommendations

BEYOND SUNY OSWEGO

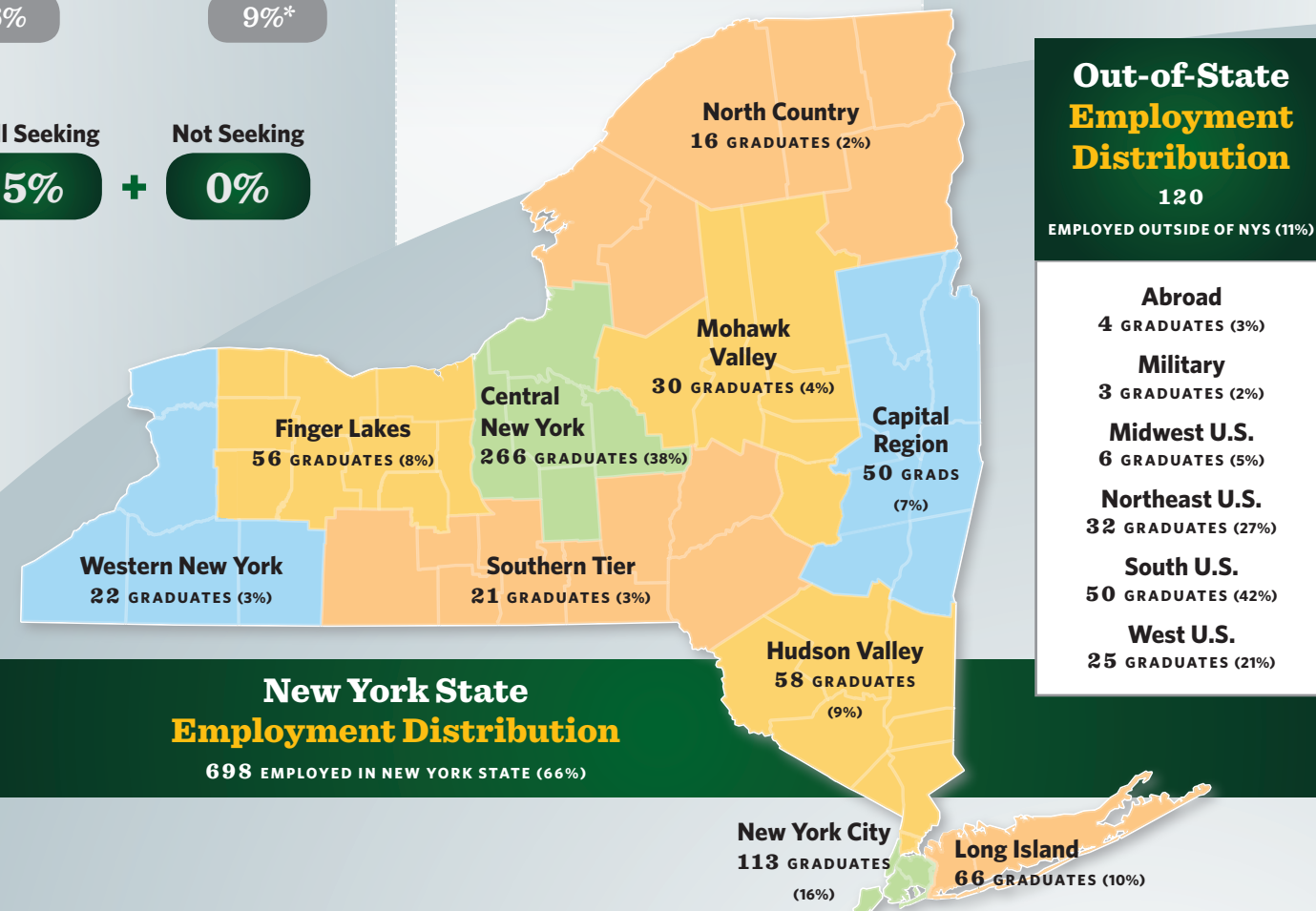
Beyond SUNY Oswego is an initiative of Career Services providing the latest information on SUNY Oswego's Class of 2016 within one year of graduation. All calculations are based on knowledge of 1,065 graduates. These graduates represent 65% percent of the total 1,639 graduates of the Class of 2016.



*Of the employed grads at left, 91% of those working full-time are in their field of choice.

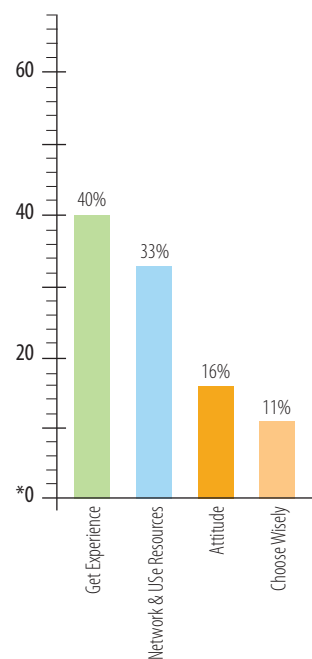


66% work in the state of New York.



Top Advice from the Class of 2016

*67 respondents



It's about never saying no to a given opportunity.

Focus on building your resume and taking advantage of every opportunity presented to you.

Internships can be such amazing experiences, whether you enter that field or not—and help in ways you can't imagine.

Find a career that makes you happy, even if it isn't the field in which you studied.

College of Liberal Arts and Sciences

682 Graduates • Information on 422 (61.9%)
253 Employed (60%) • 94 Graduate School (22.3%)
43 Employed & Graduate School (10.2%) • 31 Still Seeking (7.3%) • 1 Not Seeking (0.2%)

Sample of Employers

Albany Medical
Allied Universal Security Services
Americorps
Arc of Orange County
Bristol-Myers Squibb
Calero Software
Cape Cod Broadcasting
Car-Freshner Corporation
Cayuga Nature Center
Center for Discovery
CitiBOCES
Delta Airlines
Department of Education
Disney World
Elmcrest Children's Center
Halo Network
IBM
Integrative Counseling Services
John's Hopkins School of Medicine
Keuka College
Lawrence National Lab
Liberty Resources
Lockheed Martin
Memorial Sloan Kettering
Norwich Pharmaceutical
NYS Assembly
NYS Dept of Conservation
Oswego County Opportunities
Roswell Cancer Institute
Salesforce
Sherwin Williams
Syracuse Medical Health
The Wild Animal Sanctuary
Turning Stone Casino
VanGuard Group

	Total Graduates	Responding	Employed	Graduate Study	Employed and Study	Still Seeking	Not Seeking
American Studies	1	0	0	0	0	0	0
Anthropology	11	7	6	0	1	0	0
Applied Math Economics	3	2	1	1	0	0	0
Applied Mathematics	6	5	1	3	0	1	0
Biochemistry	16	12	5	6	0	1	0
Biology	56	33	12	10	11	0	0
Chemistry	10	8	3	3	1	1	0
Cinema & Screen Studies	27	14	11	0	0	3	0
Cognitive Science	6	4	2	2	0	1	0
Computer Science	17	11	9	0	1	0	0
Creative Writing	37	19	15	3	1	0	0
Economics	14	11	7	3	0	1	0
Electric & Computer Engineering	2	1	0	0	0	1	0
English	30	15	5	5	3	2	0
French	1	1	0	0	0	0	1
Gender & Women's Studies	1	1	1	0	0	0	0
Geochemistry	2	2	1	1	0	0	0
Geology	9	5	3	2	0	0	0
German	2	1	1	0	0	0	0
Global & International Studies	14	10	6	2	1	1	0
History	33	22	10	7	3	2	0
Human Development	72	50	28	16	6	0	0
Information Science	9	4	4	0	0	0	0
Language & International Trade	4	3	2	0	0	1	0
Linguistics	3	3	0	2	0	1	0
Mathematics	3	2	1	0	1	0	0
Meteorology	12	9	6	1	1	1	0
Online Public Justice	8	5	5	0	0	0	0
Philosophy	6	4	3	1	0	0	0
Philosophy-Psychology	3	1	1	0	0	0	0
Physics	9	7	2	3	1	1	0
Political Science	12	8	6	1	1	0	0
Psychology	72	45	24	14	5	2	0
Psychology 5-year	1	1	1	0	0	0	0
Public Justice	93	58	44	2	5	7	0
Sociology	23	13	8	3	1	1	0
Software Engineering	6	4	2	1	0	1	0
Spanish	8	4	4	0	0	0	0
Zoology	40	17	13	2	0	2	0

School of Business

402 Graduates • Information on 280 (69.7%)
232 Employed (82.9%) • 23 Graduate School (8.2%)
14 Employed & Graduate School (5%) • 11 Still Seeking (3.9%) • 0 Not Seeking (0%)

Sample of Employers

ABF Freight
Active International
Aerotek
Aflac
Allstate
Amazon
Anheuser Busch
Bank of Montreal
Berdon LLP
BNY Mellon
Brown & Brown Insurance
Cardinal Financial
Colliers International Canada
Dermody, Burke & Brown
Enterprise Holdings
Fidelis Care
Firley, Moran, Freer, & Eassa CPA PC
Frito-Lay

	Total Graduates	Responding	Employed	Graduate Study	Employed and Study	Still Seeking	Not Seeking
Accounting	55	41	24	11	4	2	0
Accounting / Management 5-year	21	14	14	0	0	0	0
Business Administration	173	117	95	11	7	4	0
Finance	44	34	30	1	2	1	0
Human Resource Management	36	28	26	0	0	2	0
Marketing	57	33	30	0	1	2	0
Operations Management & Information Systems	7	6	6	0	0	0	0
Risk Management & Insurance	9	7	7	0	0	0	0

Geico	Pathfinder Bank	SRC Inc	U.S. Department of Defense
Ironshore	Paychex	Target	Upstate Medical
KPMG	PricewaterhouseCoopers	Terakeet	Wegmans Food Market
Manning and Napier	Pyramid Management Group	The Bonadio Group	Wells Fargo
Morgan Stanley	Rapid Response Monitoring	The Institute for Family Health	
Mutual of Omaha	Ryan Sharkey LLP		
NY Life	SIDEARM Sports	Turning Stone Resort Casino	

School of Education

232 Graduates • Information on 160 (69%)
90 Employed (56.3%) • 37 Graduate School (23.1%)
29 Employed & Graduate School (18.1%) • 4 Still Seeking (2.5%) • 0 Not Seeking (0%)

ADOLESCENCE EDUCATION (7-12)

	Total Graduates	Responding	Employed	Graduate Study	Employed and Study	Still Seeking	Not Seeking
Biology	4	4	3	1	0	0	0
Chemistry	3	1	0	1	0	0	0
English	13	9	4	2	3	0	0
Math	5	5	2	1	2	0	0
Social Studies	14	11	4	2	5	0	0
Spanish	3	2	0	2	0	0	0

CHILDHOOD EDUCATION (1-6)

Arts	3	2	1	0	1	0	0
Biology	5	4	1	2	1	0	0
Chemistry	3	1	1	0	0	0	0
Earth Science	4	3	3	0	0	0	0
English	18	13	8	2	3	0	0
Math	7	6	4	1	1	0	0
Physics	5	4	1	2	1	0	0
Social Studies	26	18	12	3	2	1	0
Spanish	2	2	1	0	1	0	0
Women's Studies	1	1	1	0	2	0	0

Agricultural Education	1	1	0	0	1	0	0
Technology Education	21	16	11	3	0	1	0
Technology Management	8	6	5	0	0	0	0
TESOL Clinically Rich K-12	6	3	2	0	1	0	0
Trade Education	2	1	1	0	0	0	0
Wellness Management	78	47	25	15	5	2	0

School of Communication, Media and the Arts

323 Graduates • Information on 203 (62.8%)
166 Employed (81.8%) • 19 Graduate School (9.4%)
5 Employed & Graduate School (2.5%) • 11 Still Seeking (5.3%) • 2 Not Seeking (1%)

	Total Graduates	Responding	Employed	Graduate Study	Employed and Study	Still Seeking	Not Seeking
(Art) Graphic Design Emphasis	32	23	19	2	0	2	0
(Art) Studio Emphasis	12	6	4	2	0	0	0
Broadcasting & Mass Comm.	112	70	56	6	2	4	2
Communication & Social Interaction	54	33	26	4	1	2	0
Fine Arts	11	6	5	0	0	0	0
Graphic Design	28	23	18	1	1	2	0
Journalism	15	10	10	2	0	0	0
Music	9	4	3	1	0	0	0
Public Relations	45	26	23	1	1	1	0
Theatre	5	2	2	0	0	0	0

Sample of Employers

ABC News
Adirondack River Photography
Annie - National Tour
Bradley Visuals
Broadcast Music, Inc
CBS News
CGI Communications
Complex Media
FAI Design Group
Fox News
Galaxy Communications
KRDO NewsChannel 13
MLB Network

Nashville Predators
NBCUniversal
NextStar Media Group
Palladium Times
PepsiCo
Pulse Creative
Screenvision Media
Sirius XM
Spectrum News
Steele Advertising
Terakeet
Universal McCann

Selected Positions

Teaching

63% TEACHER (ALL GRADES / DISCIPLINES)
25% SUBSTITUTE (ALL GRADES / DISCIPLINES)
12% TEACHING ASSISTANT

Non-Teaching

CERTIFIED NURSING ASSISTANT
ENGINEERING TECHNICIAN
FITNESS SPECIALIST
HEAD WOMEN'S SOCCER COACH
HEALTH PROGRAM COORDINATOR
HUMAN RESOURCE OFFICER

PATIENT SERVICES COORDINATOR
PUBLIC HEALTH SPECIALIST
RESIDENT PROGRAM DIRECTOR
WIC NUTRITIONIST
WELLNESS COACH

Sample of Employers

TEACHING

Camden Central School District
Cartwright Central Public School
Cherokee County School District
Clarkstown Central School District
Cornerstone Christian School
Douglas County School District
East Islip Union Free School District
Freeport Union Free School District
Greece Central School District
Homer Central School District
Liverpool Central School District
Marcellus Central School District
New England Center for Children
Oswego City School District
Pine Bush Central School District
St. Lucie County Public Schools
Syracuse City School District
Warwick Valley Central School District
Wellsville Central School District

NON-TEACHING

Advocates, Inc.
Beacon Health Options
BioShore Medical
Brookdale Senior Living
Catholic Charities of Buffalo
Disney World Hollywood Studios
Family YMCA - Glens Falls
LA Fitness
Project FIND
UTC Aerospace Systems

Words of Wisdom

ADVICE FROM THE SUNY OSWEGO CLASS OF 2016

ORIENT YOUR ATTITUDE

Work as hard as possible every day. That alone will help set you apart from a lot of people.

It's about never saying no to a given opportunity.

Patience is key. Any experience after graduation will be beneficial to get you to your ultimate goal. I was pressing t-shirts in December and now I'm working for an NHL franchise.

Persistence and patience have been my keys to success after graduation.

Put yourself in awkward, unfamiliar, or uncomfortable situations. The more you do, the more confident you'll become in any situation.

Working hard and doing the best you can in the workplace can help you advance in your career.

Show interest in what you are doing, and your peers at work will teach you everything you need to know to be more successful.

Laziness and entitlement are unacceptable.

CULTIVATE NETWORKS

Every experience both academically and socially was an avenue to my success after graduation.

Be active on campus and make valuable connections.

Get involved in everything possible on campus and make strong connections with professors and staff.

Get your name out there, especially in your related field.

Focus on building your resume and taking advantage of every opportunity presented to you.

It is important to know ahead of time the path you want to take, and apply to opportunities as early as possible.

GAIN EXPERIENCE

Always try to get an internship. It helped me out a lot.

Internships can be such amazing experiences, whether you enter that field or not, and help in ways you can't imagine.

Completing internships both on and off campus help future prospects tremendously.

Do internships!

Get any possible experience in your field. Internships are key when looking for jobs.

CHOOSE WISELY

Prepare for the future early, network, have long-term and short-term goals.

Remember that it's ok for your career path and goals to change.

Find a career that makes you happy, even if it isn't the field in which you studied.

Follow your interests, not just where the money is. If you do what you love, the money will follow.

Be yourself. I know it's cliche, but just do you and good things will come.

Take chances, step out of your comfort zone, and always be open to new opportunities.



OFFICE OF CAREER SERVICES

145 Marano Campus Center
Oswego, New York 13126
315.312.2255