

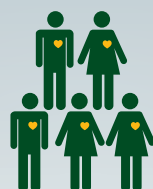
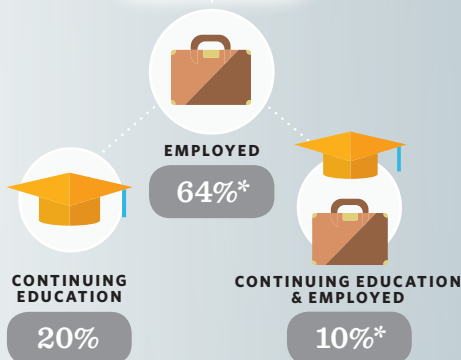
BEYOND SUNY OSWEGO

Beyond SUNY Oswego is an initiative of Career Services providing the latest information on SUNY Oswego's Class of 2015 within one year of graduation.

All calculations are based on knowledge of 1,057 graduates. These graduates represent 65% percent of the total **1,626** graduates of the Class of 2015.

Employed and/or Continuing Education

94%

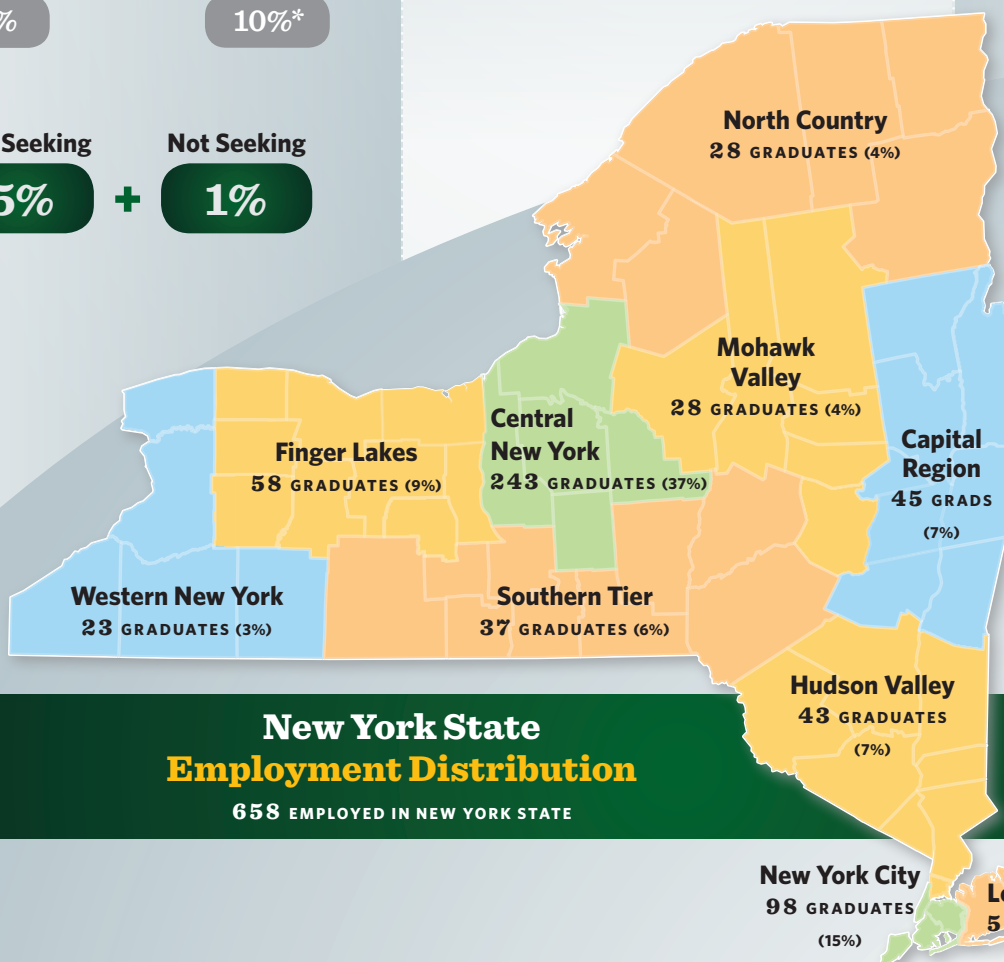


*Of the employed grads at left,
86% of those working full-time
are in their field of choice.



62%

work in the state of New York.



Out-of-State Employment Distribution

116

EMPLOYED OUTSIDE OF NYS (11%)

Midwest U.S.

8 GRADUATES (7%)

Northeast U.S.

33 GRADUATES (28%)

South U.S.

51 GRADUATES (44%)

West U.S.

14 GRADUATES (12%)

Abroad

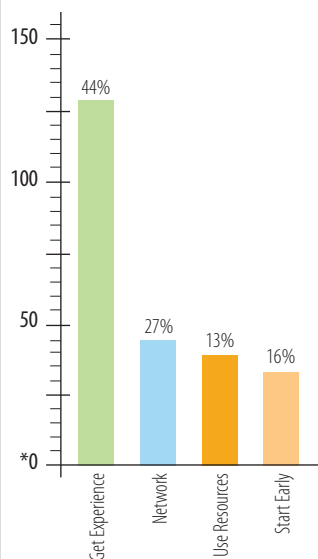
9 GRADUATES (8%)

Hawaii

1 GRADUATE (1%)

Top Advice from the Class of 2015

*148 respondents



Don't waste any time in school. Have goals with an action plan to achieve those realistic goals.

Contact and communicate with as many people as possible, you never know who can help you find a great job.

It is difficult to discover what you love without actually doing it.

Develop your LinkedIn network. I wouldn't have my job now if it wasn't for connections I made on LinkedIn.

College of Liberal Arts and Sciences

678 Graduates • Information on 424 (62.5%)

232 Employed (54.7%) • 115 Graduate School (27.1%)

38 Employed & Graduate School (9%) • 32 Still Seeking (7.5%) • 7 Not Seeking (1.7%)

Sample of Employers

Advocacy Center of
Tompkins County
AmeriCorps NCCC
ArcLight Cinemas
BAE Systems
Booz Allen Hamilton
Bristol Myers Squibb
Cayuga Counseling Services
Crouse Hospital
Delta Air Lines
Eye Surgeons of Central NY
Keuka College
Little Lukes
Medline Industries
Microsoft
Novelis
One Group
Oswego County Opportunities
Paradigm Environmental Services
PepsiCo
Rosamond Gifford Zoo
Spirit AeroSystems
SUNY Maritime
Target
Vanderbilt Museum
WMF Photography

	Total Graduates	Responding	Employed	Graduate Study	Employed and Study	Still Seeking	Not Seeking
American Studies	4	2	1	0	0	1	0
Anthropology	11	7	5	0	1	1	0
Applied Mathematics	3	3	1	1	1	0	0
Biochemistry	11	10	4	5	0	1	0
Biology	58	31	11	12	6	1	1
Chemistry	10	7	1	5	1	0	0
Cinema & Screen Studies	11	6	5	1	0	0	0
Cognitive Science	3	2	1	1	0	0	0
Computer Science	13	7	7	0	0	0	0
Creative Writing	31	19	13	3	1	2	0
Economics	12	9	5	3	0	1	0
English	33	22	12	6	2	2	0
French	2	2	1	1	0	0	0
Geochemistry	1	0	0	0	0	0	0
Geology	13	11	6	1	3	1	0
Global & International Studies	15	8	7	1	0	0	0
History	33	20	10	6	2	1	1
Human Development	42	29	14	9	5	1	0
Information Science	9	6	5	0	0	1	0
Language & International Trade	4	3	3	0	0	0	0
Linguistics	4	2	1	1	0	0	0
Mathematics	8	5	3	1	1	0	0
Meteorology	11	7	4	3	0	0	0
Online Public Justice	9	5	2	2	1	0	0
Philosophy	4	3	1	1	0	0	1
Philosophy-Psychology	3	1	0	1	0	0	0
Physics	10	8	5	2	1	0	0
Political Science	18	13	7	4	0	1	1
Psychology	127	85	39	32	6	6	2
Public Justice	89	47	34	5	2	6	0
Sociology	18	10	6	1	1	2	0
Software Engineering	2	1	0	0	1	0	0
Spanish	6	4	1	2	0	0	1
Women's Studies	1	0	0	0	0	0	0
Zoology BA	49	29	17	5	3	4	0

School of Business

404 Graduates • Information on 266 (65.8%)

208 Employed (78.2%) • 22 Graduate School (8.3%)

19 Employed & Graduate School (7.1%) • 12 Still Seeking (4.5%) • 5 Not Seeking (1.9%)

	Total Graduates	Responding	Employed	Graduate Study	Employed and Study	Still Seeking	Not Seeking
Accounting	57	37	18	10	6	1	2
Accounting / Management 5-year	32	21	20	0	1	0	0
Business Administration	168	113	94	8	7	3	1
Finance	46	30	27	1	1	1	0
Human Resource Management	24	14	12	0	0	2	0
Management Accounting	1	1	0	0	1	0	0
Marketing	62	41	29	2	3	5	2
Operations Mgmt & Info. Systems	4	2	2	0	0	0	0
Risk Management & Insurance	10	7	6	1	0	0	0

Sample of Employers

A.L. Stuart Financial Services
Accenture Credit Services
Ameriprise Financial
AT&T
AXA Advisors
Ayco-Goldman Sachs Co
Bank of New York Mellon
Bowers & Company
Broadridge Financial Solutions
Brown and Brown Insurance
Cadaret, Grant
Constellation Brands
CXtec
Deloitte & Touche
Dermody, Burke & Brown
Enterprise Holdings
Ernst & Young
Frito Lay
Fust Charles Chambers
Great American Insurance
Informa Investment Solutions
JDX Consulting
KPMG
Manning & Napier Advisors
Marcum LLP
Moody's Corporation
National Geographic
New York Life Insurance
Company
Noble Health Services
NorthStar Financial
Northwestern Mutual
Pacific Islands Club
Paychex
PricewaterhouseCoopers LLP
Prudential
Pyramid Management Group
Sherwin Williams
Target
Terakeet
Textron
The Sutherland Company
Turning Stone
Wegmans Food Markets

School of Education

227 Graduates • Information on 162 (71.4%)
74 Employed (45.7%) • 50 Graduate School (30.9%)
35 Employed & Graduate School (21.6%) • 3 Still Seeking (1.9%) • 0 Not Seeking (0%)

ADOLESCENCE EDUCATION (7-12)

	Total Graduates	Responding	Employed	Graduate Study	Employed and Study	Still Seeking	Not Seeking
Biology	3	2	1	1	0	0	0
Chemistry	1	1	1	0	0	0	0
English	12	7	2	1	4	0	0
French	1	1	1	0	0	0	0
Math	3	1	0	1	0	0	0
Social Studies	15	10	5	4	0	1	0
Spanish	2	0	0	0	0	0	0

CHILDHOOD EDUCATION (1-6)

Arts	5	4	2	2	0	0	0
Biology	4	4	0	2	2	0	0
Chemistry	2	2	2	0	0	0	0
Earth Science	6	5	2	2	1	0	0
English	28	22	2	10	10	0	0
French	1	1	1	0	0	0	0
Math	6	5	1	4	0	0	0
Physics	1	1	0	0	1	0	0
Social Studies	26	24	9	10	4	1	0
Spanish	5	4	3	0	1	0	0

Agricultural Education	1	1	1	0	0	0	0
Technical Education	1	1	1	0	0	0	0
Technology Education	26	19	11	5	3	0	0
Technology Management	3	2	1	0	1	0	0
TESOL Clinically Rich K-12	7	2	2	0	0	0	0
Trade Education	5	4	2	1	1	0	0
Wellness Management	63	39	24	7	7	1	0

Selected Positions

Teaching

61% TEACHER (ALL GRADES / DISCIPLINES)
23% SUBSTITUTE (ALL GRADES / DISCIPLINES)
9% TEACHING ASSISTANT
7% TEACHING AIDE

Non-Teaching

CHILDREN'S DIRECTOR
 CONSTRUCTION
 TECHNOLOGY COORDINATOR
 DAY REHAB COUNSELOR
 EMT
 HUMAN RESOURCES
 MACHINIST
 MEDICAL ASSISTANT
 NANNY
 PATIENT CARE TECHNICIAN
 SAFETY, HEALTH & WELLNESS
 COORDINATOR
 WELLNESS COACH

Sample of Employers

TEACHING

Albany City School District
 Anne Arundel County School District
 Cartwright School District
 Central Square Central School District
 DCMO BOCES
 Hempstead Elementary School
 Horseheads High School
 Indian River Central School District
 Jefferson Lewis BOCES
 Liverpool Central School District
 Manhattan District 1
 Mexico Central School District
 Peru Central School District
 Prince George's County School District
 Prince William County Schools
 Saint Michael's Catholic School
 Success Academy Charter School
 Unadilla Valley Central School District
 Watertown Central School District

NON-TEACHING

Blink Fitness
 Breathe Yoga
 Fresenius Medical Care
 Heritage Farms
 MINDBODY Software
 NYS Department of Health
 NOVA
 Ortho Clinical Diagnostics
 Southside Physical Therapy
 TNT Consulting

School of Communication, Media and the Arts

317 Graduates • Information on 205 (64.7%)
158 Employed (77.1%) • 25 Graduate School (12.2%)
10 Employed & Graduate School (4.9%) • 11 Still Seeking (5.4%) • 1 Not Seeking (0.5%)

	Total Graduates	Responding	Employed	Graduate Study	Employed and Study	Still Seeking	Not Seeking
(Art) Art History Emphasis	5	3	2	1	0	0	0
(Art) Graphic Design Emphasis	29	17	12	3	0	2	0
(Art) Studio Emphasis	6	2	0	1	0	1	0
Broadcasting & Mass Comm.	101	67	57	7	0	3	0
Communication & Social Interaction	58	37	29	3	3	1	1
Fine Arts	11	8	4	2	2	0	0
Graphic Design	28	17	14	2	0	1	0
Journalism	18	16	12	1	2	1	0
Music	4	3	0	1	1	1	0
Public Relations	48	30	23	4	2	1	0
Theatre	9	5	5	0	0	0	0

Sample of Employers

ABC News
 Amazon
 Americorps
 Assante Design
 Brawn Media
 CBS 7
 Ceisler Media
 CGI Communication
 CNY Central
 Community Health Care
 Cornell University
 Corning Museum of Glass
 Crown Press
 Dixon Schwabl
 E & I Corporation
 Equinox Broadcasting
 ESPN
 EverPresent
 Fat Guy Media
 Fox 35 Orlando, WOFL-TV
 Fox Syracuse
 Futurethink
 FYI Brand Communications
 GroupM Direct
 Hudson Global
 Kellen
 Lion Television
 MediaCom
 MLB Network
 NBC
 NeuLion
 Norfolk Tides
 OneShot Marketing
 Owens Illustration

Graduate School Distribution

New York State

Capital (10%)¹

Aesthetics Science Institute
Albany Law School
Suffolk University Law School
SUNY Albany
The Sage Colleges

Central (52%)¹

Crouse Hospital School of Nursing
Le Moyne College
SUNY Cortland
SUNY Environmental Science and Forestry
SUNY Oswego
SUNY Upstate Medical
Syracuse University

Finger Lakes (7%)¹

Nazareth College
Roberts Wesleyan College
Rochester Institute of Technology
St. John Fisher College
SUNY Brockport
University of Rochester

Hudson Valley (2%)¹

College of New Rochelle
Dominican College
Manhattanville College
SUNY New Paltz

Long Island (3%)¹

Adelphi University
LIU Post
Long Island University
SUNY Stony Brook

Mohawk Valley (2%)¹

Herkimer Community College
Utica College

New York City (13%)¹

City College of New York
CUNY Brooklyn College
CUNY Queens College
Fordham University
Hunter College
Manhattan College
Mercy College
New York Law School
New York University
Pace University
St. John's University
Teachers College Columbia University
Touro College

North Country (2%)¹

SUNY Plattsburgh
SUNY Potsdam

Southern Tier (4%)¹

Binghamton University
Cornell University
Ithaca College
SUNY Binghamton

Western (5%)¹

Canisius College
D'Youville College
Niagara University
SUNY Buffalo

Out-of-State

Northeast (25%)²

Does not include NYS distribution

Berklee College of Music
Boston College
College of Saint Joseph
Edinboro University
Lake Erie College of Osteopathic University
Southern New Hampshire University
Springfield College
Temple University
Tufts University
University of Bridgeport
University of New England
University of New Haven
Vermont Law School

West (12%)²

Cinema Makeup School
Hope International University
San Juan College
University of California, Davis
University of Colorado
University of Utah

Abroad (12%)²

Glasgow School of Art
Roehampton University
University of Aberdeen
University of Kent
University of Manchester
University of St. Andrews

South (15%)²

Florida A&M University
George Washington University
University of Baltimore School of Law
University of Maryland
University of North Carolina at Greensboro
University of Tampa
University of Texas at Dallas

Online (24%)²

Concordia University
Grand Canyon University
SUNY Polytechnic
University of Maryland
University of Phoenix
Walden University

Midwest (12%)²

Bowling Green State University
Ohio State University
University Of Illinois at Urbana-Champaign
Wright State University

¹ THE % OF GRADUATES ATTENDING GRADUATE SCHOOL IN NEW YORK STATE

² THE % OF GRADUATES ATTENDING GRADUATE SCHOOL OUT-OF-STATE

Sample of Graduate Schools Visiting the Oswego Campus

Adelphi University
Albany College of Pharmacy & Health Science
Albany Law School
Alfred University
American University
St. Maarten School of Medicine
Binghamton University, School of Social Work
Boston Architectural College
City College of New York
Clarkson University
CUNY Queens College
CUNY School of Law
D'Youville College

Daemen College
Fordham University
Hofstra University
John Jay College of Criminal Justice
Manhattan College
Massachusetts College of Pharmacy and Health Sciences
Medaille College
Mercy College
Nazareth College
New York Institute of Technology
New York Law School
Niagara University
Pace University
Quinnipiac University

Roberts Wesleyan College
Rochester Institute of Technology
Roger Williams University
Ross University
Sacred Heart University
St. John's University
St. Joseph's College
Stony Brook University
College of Business
Suffolk University
SUNY Geneseo
SUNY Oneonta
SUNY Oswego
Syracuse University
The College of New Rochelle

The College of Saint Rose
The New York Film Academy
The Ohio State University
The Sage Colleges
Touro Law Center
Union Graduate College
University at Albany
University at Buffalo
University of New Hampshire
University of Rochester
Warner School of Education
Western New England University School of Law
Widener University Commonwealth Law School



Words of Wisdom

• Advice from the SUNY Oswego Class of 2015 •

1 ORIENT YOUR ATTITUDE

Always keep your future in mind while studying in college. It is essential to have a plan, and to work towards the aforementioned plan. Be involved, seek assistance, build relationships, gain experience, and thrive as a professional.

Don't waste any time in school. Have goals with an action plan to achieve those realistic goals.

Use Career Services, do internships related with to you want to do outside of college and give everything you do your full effort.

Take the time to find yourself.

Be involved, seek assistance, build relationships, gain experience, and thrive as a professional.

Don't settle.

Broaden your horizons. Choose a minor that is not entirely related to your major.

Oswego is what you make it, all opportunities are available to you.

2 CULTIVATE NETWORKS

Get your name out there in a positive way.

Take advantage of all that the Career Services office at SUNY Oswego has to offer. The endless opportunities in which this department provides students and offers to those seeking professional guidance, align nearly every student with success. They truly will help guide you in attaining the professional career in the field in which you have always wanted to work.

Contact and communicate with as many people as possible, you never know who can help you find a great job.

Stay connected with professors and classmates, the more connections the better.

Network with instructors and advisors for professional advice.

Join local associations related to your field.

3 GAIN EXPERIENCE

Employers love to see what you've done outside of the classroom.

I would advise everyone to participate in an internship.

My advice would be to pay attention to building your resume and gaining experience as much as you can before you graduate.

It is difficult to discover what you love without actually doing it.

Internships are a great way to get your foot in the door and show a prospective employer the real you.

Learn as much as you can from your internship.

Studying Abroad played a key role in landing my current job.

Take any job or volunteer position that keeps your 'foot in the door' with your career.

4 SUCCESSFULLY LAUNCH

Every interview is an incredible learning experience, even if you don't get a job offer from it. Set a goal and take all the steps necessary to get there.

Keep applying for jobs and don't get discouraged.

Use Career Services and give everything you do your full effort.

Start applying for jobs before graduation!

I called my current manager and asked him for 15 minutes at a coffee shop to discuss the position. The rest is history.

Take advantage of the Compass and the services that they provide for job and internship searches.

Develop your LinkedIn network. I wouldn't have my job now if it wasn't for connections I made on LinkedIn.

It is important to have a plan laid out for the immediate months following graduation. Work the plan.

Leave college with an impressive resume, not just a degree.

Career Services • 145 Marano Campus Center • SUNY Oswego • Oswego, New York 13126
315.312.2255 • oswego.edu/careerservices

CAREER SERVICES