

## Graduate School Distribution

New York State		Out-of-State	
<b>Capital (4%)<sup>1</sup></b> Albany College of Pharmacy and Health Sciences SUNY Albany The College of Saint Rose The Sage Colleges	<b>New York City (10%)<sup>1</sup></b> Columbia University CUNY Hunter College CUNY John Jay College of Criminal Justice CUNY Queens College Fordham University LIM College New York Chiropractic College New York Institute of Technology New York University Pace University SUNY College of Optometry SUNY Downstate Health Science Center Teachers College Touro College	<b>Abroad (2%)<sup>2</sup></b> St. Matthew's University	<b>Online (11%)<sup>2</sup></b> California Lutheran University Southern New Hampshire Walden University
<b>Central (55%)<sup>1</sup></b> LeMoyne College SUNY Cortland SUNY Oswego SUNY Upstate Medical University Syracuse University	<b>North Country (2%)<sup>1</sup></b> Clarkson University	<b>Midwest (26%)<sup>2</sup></b> Chicago School of Professional Psychology DePaul University Heidelberg University Iowa State University John Marshall School of Law Kansas State University Kent State University Loyola University Northwestern University Ohio State University South Dakota State University University of Wisconsin	<b>South (17%)<sup>2</sup></b> Emory University Florida Institute of Technology Georgia Tech Miami University Middle Tennessee State University University of Miami Wake Forest University West Virginia University
<b>Finger Lakes (5%)<sup>1</sup></b> Nazareth College Roberts Wesleyan College Rochester Institute of Technology SUNY Brockport University of Rochester	<b>Southern Tier (3%)<sup>1</sup></b> SUNY Binghamton	<b>Northeast (33%)<sup>2</sup></b> <i>Does not include NYS distribution</i> California University of Pennsylvania Clarion University of Pennsylvania Duquesne University Geisinger Commonwealth School of Medicine Lake Erie College Pennsylvania College of Podiatric Medicine Ramapo College of New Jersey Sacred Heart University Suffolk University Temple University University at New Haven University at Pittsburgh	<b>West (11%)<sup>2</sup></b> Chapman University Middlebury Institute of International Studies University of New Mexico University of Southern California
<b>Long Island (9%)<sup>1</sup></b> Adelphi University Hofstra University Molloy College St. Joseph's College SUNY Stony Brook	<b>Western (7%)<sup>1</sup></b> Alfred University Canisius College D'Youville College Niagara University SUNY University at Buffalo		
<b>Mohawk Valley (4%)<sup>1</sup></b> SUNY Oneonta Utica College			

<sup>1</sup> THE % OF GRADUATES ATTENDING GRADUATE SCHOOL IN NEW YORK STATE

<sup>2</sup> THE % OF GRADUATES ATTENDING GRADUATE SCHOOL OUT-OF-STATE

## Sample of Graduate Schools Visiting the SUNY Oswego Campus

Albany Law School	Drexel University	Quinnipiac University	SUNY Plattsburgh
Alfred University	Emerson College	School of Law	Syracuse University College of Law
American International College	Fordham University	Roberts Wesleyan College	Syracuse University School of Education
Bellevue University	Hofstra University	Rochester Institute of Technology	Temple University School of Podiatric Medicine
Bentley University	John Jay College of Criminal Justice	Ross University School of Medicine	The City University of New York
Binghamton University	Keuka College	St. John Fisher College	The College of Saint Rose
Canisius College	Le Moyne College	St. John's University	The Sage Colleges
Castleton University	Long Island University LIU	St. Kitts	The University of Tampa
Clarkson University	Marist College	Suffolk University	University at Buffalo College of Arts & Sciences
Colgate Rochester Crozer Divinity School	Mercy College	SUNY Brockport	University of Rochester
College of Mount Saint Vincent	Molloy College	SUNY Cortland	Vermont Law School
D'Youville College	New York Film Academy	SUNY Geneseo	Western New England University
Daemen College	New York Institute of Technology	SUNY New Paltz	
Dominican College	Niagara University	SUNY Oneonta	
	Pace University	SUNY Oswego	



OFFICE OF CAREER SERVICES

145 Marano Campus Center • Oswego, New York 13126 • 315.312.2255 • oswego.edu/careerservices



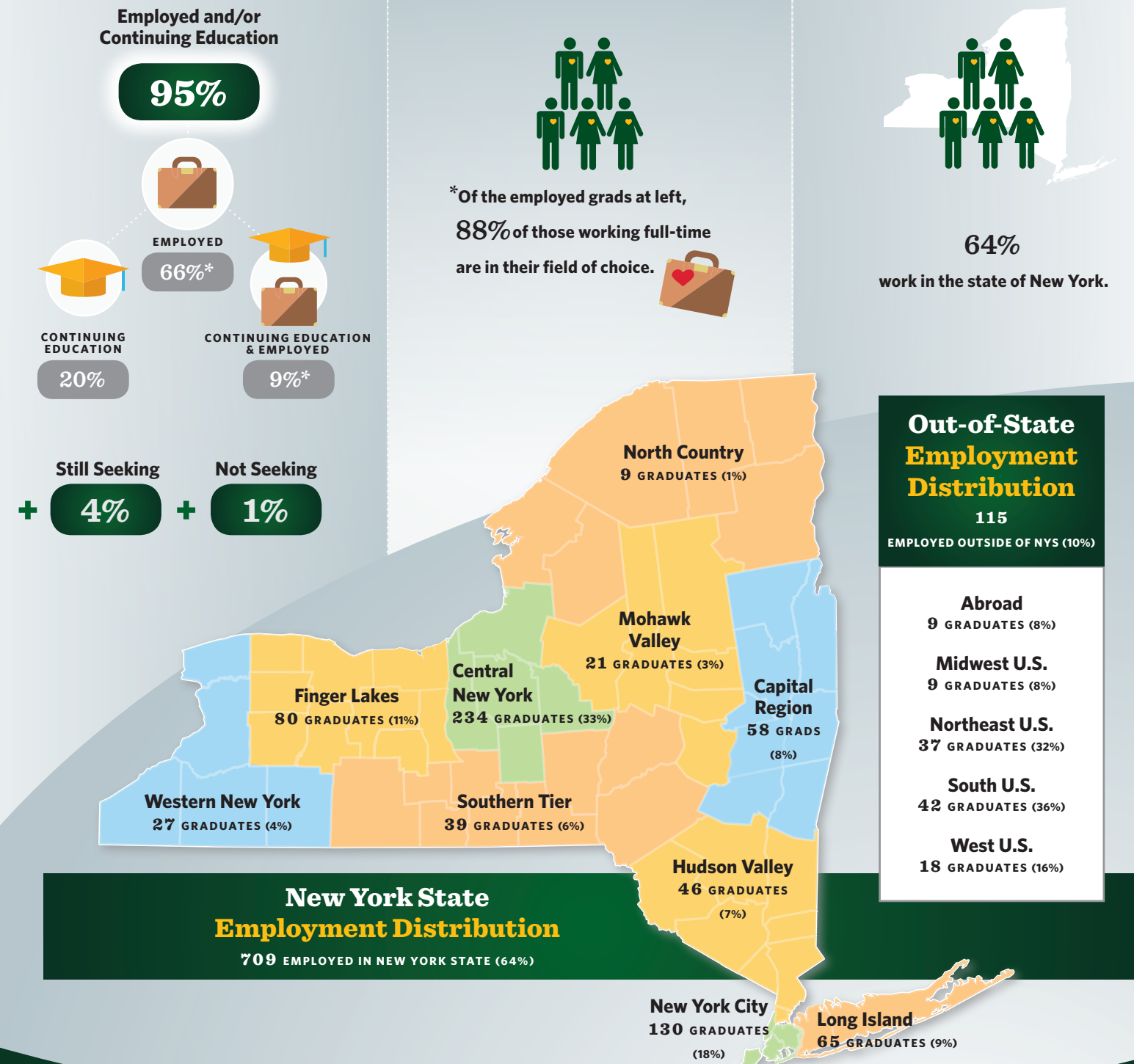
## SUNY Oswego Class of 2017 Graduate Report

Employer highlights, graduate & professional study data, geographic distribution

### BEYOND SUNY OSWEGO

Beyond SUNY Oswego is an initiative of Career Services providing the latest information on SUNY Oswego's Class of 2017 within one year of graduation.

All calculations are based on knowledge of 1,106 graduates. These graduates represent 65% percent of the total 1,708 graduates of the Class of 2017.



"Responding" refers to the number of graduates about whom we have information.

## College of Liberal Arts and Sciences

688 Graduates • Information on 431 (62.6%)  
 251 Employed (58.3%) • 112 Graduate School (26%)  
 42 Employed & Graduate School (9.7%) • 23 Still Seeking (5.3%) • 3 Not Seeking (0.7%)

	Total Graduates	Responding	Employed	Graduate Study	Employed and Study	Still Seeking	Not Seeking
American Studies	2	1	1	0	0	0	0
Anthropology	10	3	2	0	0	1	0
Applied Math Economics	3	1	0	0	0	0	1
Applied Mathematics	6	6	4	1	1	0	0
Biochemistry	17	14	7	7	0	0	0
Biology	60	39	19	19	1	0	0
Chemistry	22	17	6	9	0	1	1
Cinema & Screen Studies	22	12	7	2	1	2	0
Cognitive Science	4	4	0	2	2	0	0
Computer Science	22	17	12	1	2	2	0
Creative Writing	32	17	11	2	3	1	0
Economics	5	3	2	1	0	0	0
Electric & Computer Engineering	3	3	1	1	0	1	0
English	32	24	14	4	2	4	0
Gender & Women's Studies	2	1	0	0	1	0	0
Geology	19	10	7	3	0	0	0
German	1	0	0	0	0	0	0
Global & International Studies	10	2	2	0	0	0	0

### Sample of Employers

Advance Testing	Burke Rehabilitation Hospital	Exelon	Monroe County Police	Oswego County Department of Social Services
Alzheimer's Association	Chubb Insurance	FBI	National Zoo & Aquarium	Spectrum News
AmeriCorps	CNY Services	Federal Reserve Board	New York State Assembly	The Nature Conservancy
ARC of Onondaga	Corstar Communications	Forest Animal Rescue	Novelis	The New York Times
AXA Equitable	Cornell University	IBM	NYC Department of Education	US Navy
Binghamton Zoo at Ross Park	Department of Defense	Jet Propulsion Laboratory	NYS Assembly	Xerox
Booz Allen Hamilton	Edge Pharmacy Services	JPMorgan Chase	Oregon Department of Fish and Wildlife	
Bristol-Myers Squibb	EXECControl Global Solutions	London Stock Exchange Group		

## School of Business

456 Graduates • Information on 309 (67.8%)  
 247 Employed (80%) • 31 Graduate School (10%)  
 14 Employed & Graduate School (4.5%) • 15 Still Seeking (4.9%) • 2 Not Seeking (0.6%)

	Total Graduates	Responding	Employed	Graduate Study	Employed and Study	Still Seeking	Not Seeking
Accounting	53	39	23	13	0	2	1
Accounting / Management 5-year	38	32	32	0	0	0	0
Business Administration	186	121	95	10	7	9	0
Finance	60	44	36	3	3	2	0
Human Resource Management	27	23	16	4	2	1	0

### Sample of Employers

Aerotek	CIG Insurance	Eaton Corporation	LeverPoint	Orion Commodities Management	Terakeet
AGM Manhattan	Colombian Financial Group	EisnerAmper	LifeMark Securities Corp	Paychex	The Bonadio Group
Atlas Financial Holdings	CommerceHub	Enterprise Rent-a-Car	M&T Bank	Prudential Financial	Travelers Insurance
AXA Equitable	Commonwealth Financial Network	Fastenal	Memorial Sloan Kettering Cancer Center	PwC	Wegmans
Ayco	Dannible & McKee	Fust Charles Chambers	Northwestern Mutual	Pyramid Group	Wells Fargo
Bankers Healthcare Group	del Lago Resort & Casino	Johnson & Krol, LLC	NYS Comptroller	Rapid Response Monitoring	Yelp, Inc.
BNY Mellon	DiMarco, Abiusi & Pascarella	JPMorgan Chase	NY Power Authority	Saab Defense & Security	
Bowers & Company	Department of Defense	KeyBank	Office of the Comptroller of the Currency	Sherwin-Williams	
Brown & Brown Insurance	Eastman Kodak Company	KPMG		Stony Brook Medicine	
Bully Hill Vineyards				Target	

## School of Education

223 Graduates • Information on 142 (63.7%)  
 63 Employed (44.4%) • 48 Graduate School (33.8%)  
 28 Employed & Graduate School (19.7%) • 3 Still Seeking (2.1%) • 0 Not Seeking (0.0%)

	Total Graduates	Responding	Employed	Graduate Study	Employed and Study	Still Seeking	Not Seeking
Biology	2	1	1	0	0	0	0
English	7	6	1	3	2	0	0
Math	4	2	1	1	0	0	0
Social Studies	17	13	5	7	1	0	0
Spanish	2	2	2	0	0	0	0

Business & Marketing Education	1	1	1	0	0	0	0
--------------------------------	---	---	---	---	---	---	---

	Total Graduates	Responding	Employed	Graduate Study	Employed and Study	Still Seeking	Not Seeking
Arts	3	3	1	2	0	0	0
Chemistry	1	1	0	1	0	0	0
Earth Science	6	6	2	1	3	0	0
English	22	15	3	4	7	1	0
Math	2	0	0	0	0	0	0
Social Studies	23	15	2	8	5	0	0
Spanish	2	1	1	0	0	0	0

Technology Education	17	9	4	2	3	0	0
Technology Management	10	6	5	1	0	0	0
TESOL Clinically Rich K-12	9	6	5	1	0	0	0
Trade Education	7	6	5	0	1	0	0
Wellness Management	88	49	24	17	6	2	0

## School of Communication, Media and the Arts

341 Graduates • Information on 224 (65.7%)  
 168 Employed (75%) • 28 Graduate School (12.5%)  
 11 Employed & Graduate School (4.9%) • 13 Still Seeking (5.8%) • 4 Not Seeking (1.8%)

	Total Graduates	Responding	Employed	Graduate Study	Employed and Study	Still Seeking	Not Seeking
(Art) Art History Emphasis	1	0	0	0	0	0	0
(Art) Graphic Design Emphasis	21	18	16	1	0	1	0
(Art) Studio Emphasis	11	6	4	0	0	2	0
Broadcasting & Mass Comm.	126	88	66	9	5	5	3
Broadcasting/MBA 5-year	2	2	2	0	0	0	0

### Sample of Employers

ACS Web Design & SEO	CAPA Global Education Network	Galaxy Communications	Marvel Metropolitan Section PGA	Poughkeepsie Journal	Terakeet
ADP	Citizens Campaign for the Environment	ITV America	Mindshare	Red Fuse Communications	The Citizen
Advance Media New York	Colloca Estate Winery	Kellen Company	Mission Media	Reed Exhibitions	Tourico Holidays
Audiobrain	Corinthian Media	KMP Media Co	MSLGROUP	Riger Marketing	Verizon
BDR Creative Concepts	Daily Burn	KMVT	NBCUniversal	Communications	Viacom
Bridgeport Bluefish	Digital Hyve	Knowledge Diffusion Inc.	New York One News	Sinclair Broadcast Group	WSYT
Butler/Tiill		LRG Marketing	Syracuse Stage	Spectrum News	WWTI
BZDesign		Communications		Syracuse Stage	Yelp, Inc.

## Selected Positions

### Teaching

**81%** TEACHER (ALL GRADES / DISCIPLINES)  
**8%** SUBSTITUTE (ALL GRADES / DISCIPLINES)  
**11%** TEACHING ASSISTANT

### Non-Teaching

Assistant Project Manager	Human Resource Manager
Associate Care Specialist	Marketing Coordinator
Athletic Trainer	Medicaid Service Coordinator
Behavior Support Specialist	Patient Care Assistant
Case Manager	Physical Therapy Technician
Community Life Director	Strength and Conditioning Coach
Engaged Life Program Instructor	Technical Recruiter

### Sample of Employers

<b>TEACHING</b>	Schodack Central School District
Albany City School District	Seneca Falls Central School District
Greater Amsterdam School District	Syracuse City School District
Buffalo Public School District	York Preparatory Academy
Chemung County Youth Bureau	
Cherry Valley Springfield Central School District	<b>NON-TEACHING</b>
Dolgeville Central School District	Acacia Network
Elmwood-Franklin School	Albany Medical Center
Farmingdale School District	Amazon
Fulton City School District	American Cancer Society
Johnson City Central School District	Amsterdam Nursing Home
Malverne Union Free School District	Disabled Persons Action Organization
Middle Country Central School District	GoodLife Fitness
Monroe-Woodbury Central School District	Medtronic Incorporated
North Merrick Union Free School District	Midtown Athletic Club
Rochester City School District	Optimal Fitness
Roslyn School District	R&F Acquisition Group
	Syracuse Orthopedic Specialists
	Watermark Retirement Communities