

President's Budget Advisory Group

October 19, 2021



Agenda

- NYS Budget Summary 2021-2022
- SUNY Oswego Budget Planning
- SUNY Oswego Enrollment
- Current Searches
- SUNY Oswego COVID-19 Related Expenses
- SUNY Oswego HEERF
- Oswego College Foundation
- Capital Updates
- COVID-19 Testing and Vaccination
- Middle States Self-Study



NYS Executive Budget Summary 2021-2022

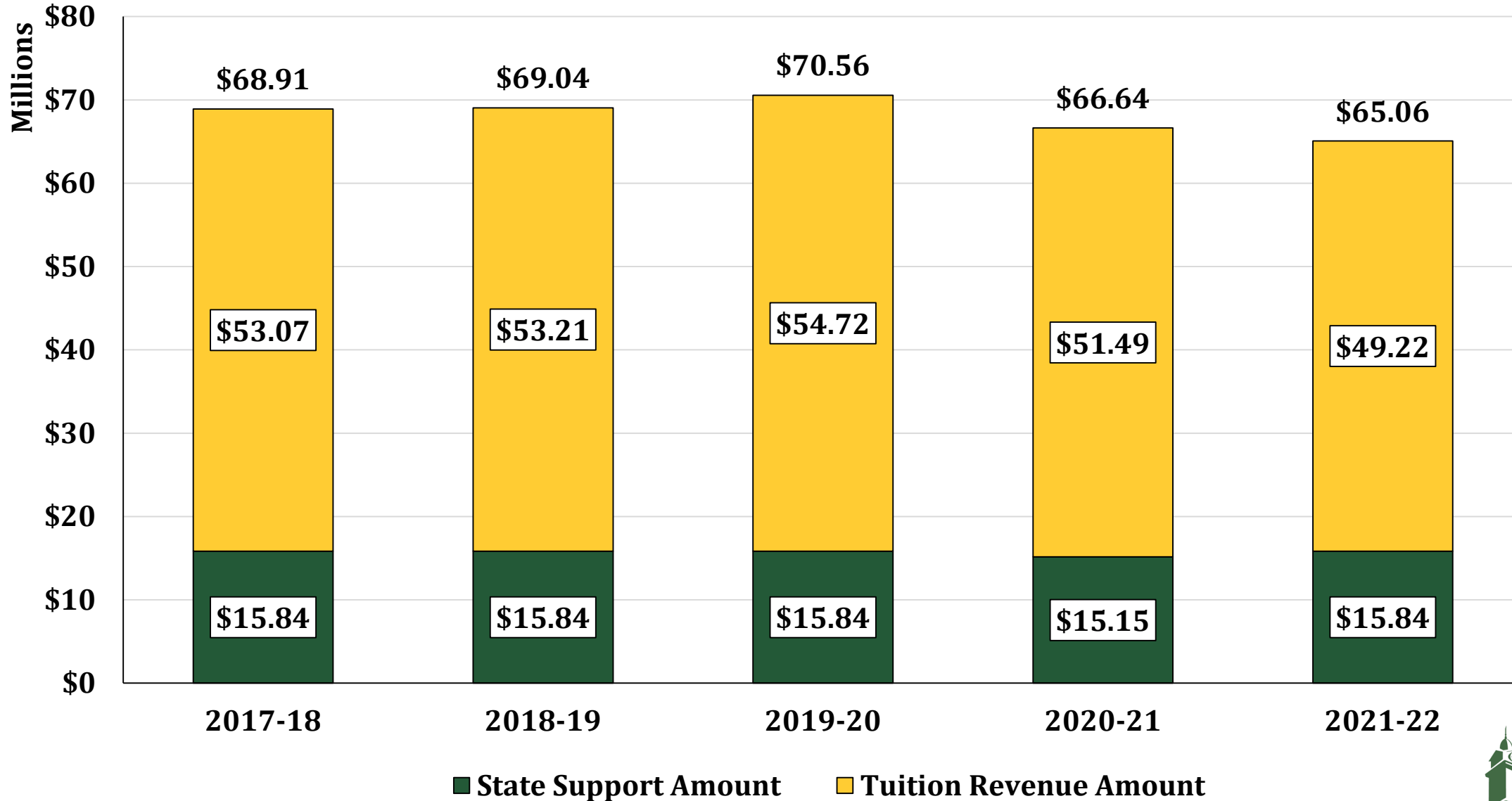
- No Deficit Reduction Plan going forward
- Discontinuation of Maintenance of Effort (MOE) and Predictable Tuition Plan
- Excelsior support remains at current level
- TAP gap phase out by 2024-2025
 - Ceiling increased by \$500
 - Reduce the annual \$3.4m TAP gap for SUNY Oswego by 2024-2025
- EOP increased support
 - \$6.4m SUNY side – Oswego share TBD
- Student mental health funds restored and increased
 - \$2m SUNY wide – Oswego share TBD
- Students with disabilities funding increased
 - \$2m SUNY wide – Oswego share TBD
- Critical maintenance (\$550m) continued
 - Plus \$100m for program enhancement and expansion

SUNY Oswego Budget 2021-2022

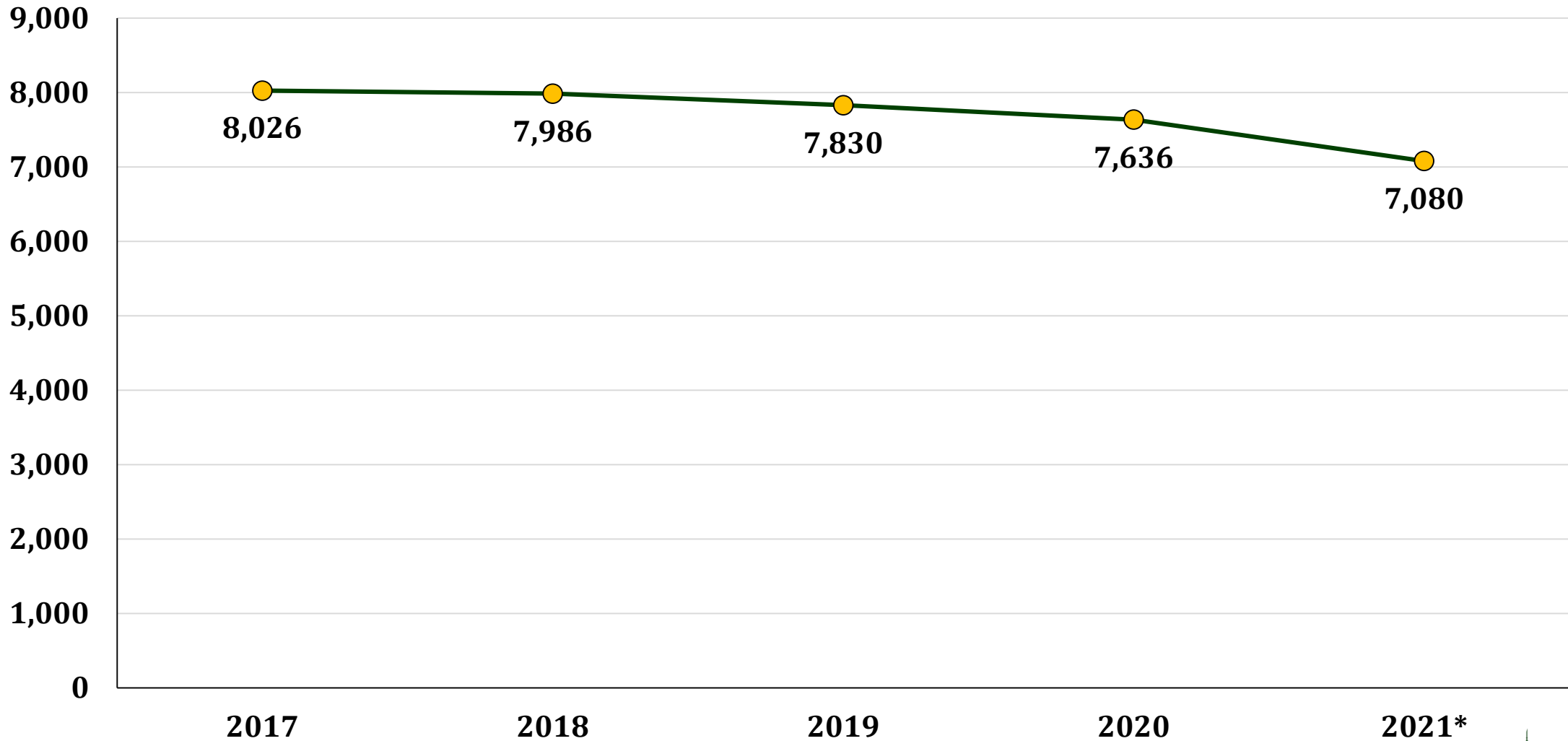
(current Fiscal Year)

- 100% of available annual state allocation as of July 1, 2021
 - No reduction in state support—fully restored from 2020-2021
- Rational Tuition Plan currently remains inactive
- Tuition Credit (TAP Gap) reduced campus obligation by ~\$1m
 - Plan to phase out fully by 2024-2025
- No additional support provided for negotiated salary increases
- Challenges with overall financial plan continue—Enrollment/Revenue related

SUNY Oswego 2021-2022 Budget: Five year Financial Plan Summary

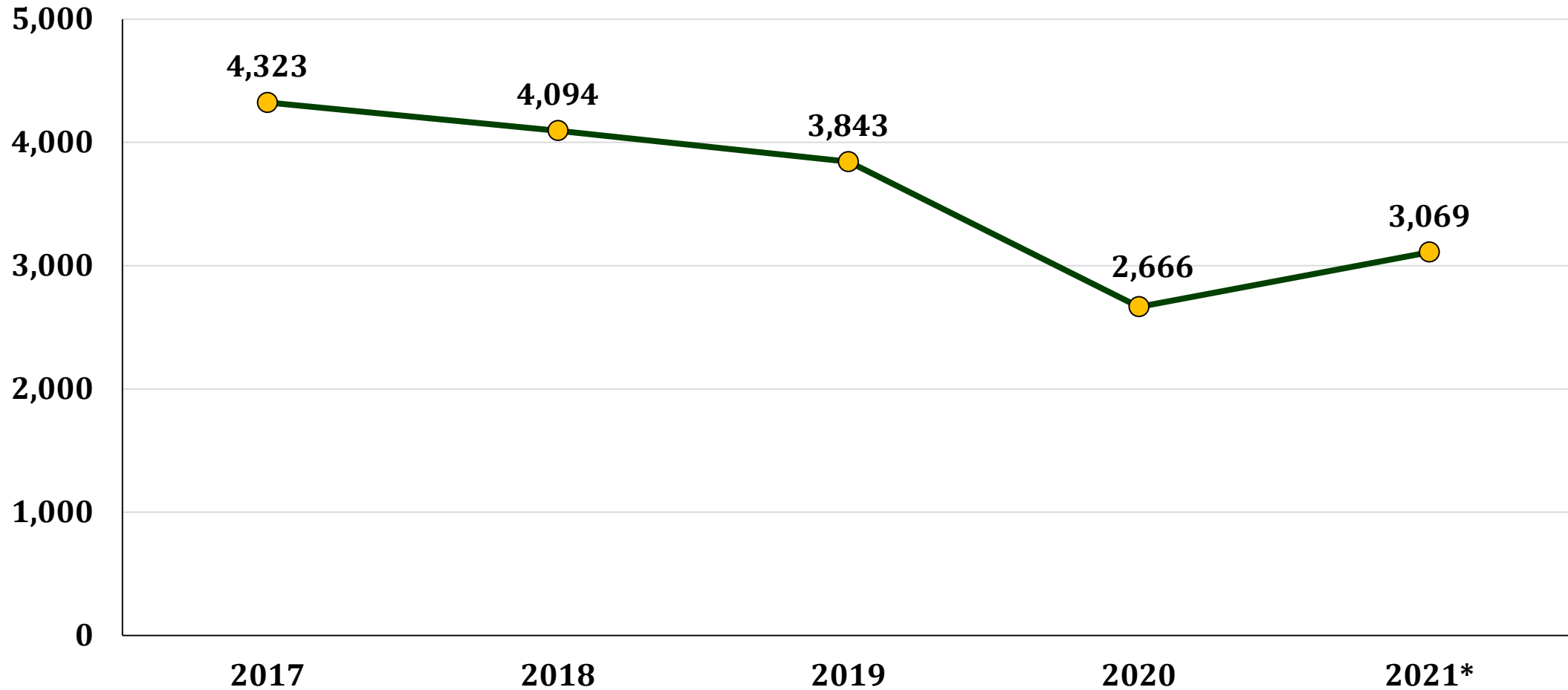


SUNY Oswego Fall Official Headcounts 2017-2021



*2021 data preliminary: current as of October 15, 2021

Students Living in On-Campus Residential Housing Fall Semesters 2017-2021



*2021 data preliminary: current as of October 15, 2021

Enrollment: Undergraduate + Graduate Students*

- 7,080
 - 6,150 undergraduate
 - 930 graduate
- 2,244 (31%) are culturally-diverse
- 1,912 (27%) from NYC and Long Island
- 2,172 (31%) from Oswego and contiguous counties
- 165 (2.3%) are international students from 40 different countries
- 272 (4%) of US students are from outside NY state
 - 31 states and the District of Columbia represented in our student population



**Data preliminary, current as of October 15, 2021. Includes full-time and part-time degree-seeking students only. Excludes 26 exchange students*

Current Searches

- Faculty searches
 - 24 Tenure Track Faculty (for 2022-2023 start)
 - Shineman Endowed Professor in Chemistry
 - Endowed Professor in Electrical and Computing Engineering
- Staff searches
 - Director of Admissions
 - Two Human Resources Assistants
- PRODiG
 - 2021-2022: Three PRODiG faculty members (submitted)
 - Currently have two PRODiG Fellows



SUNY Oswego COVID-19 Related Expenses

Item	Cost
Nurses	\$166,367
PPE	\$736,000
Student Workers	\$32,000
Wastewater Testing	\$138,652
Saliva Testing	\$2,356,085
Retrofitting	\$62,324
Other (IT, Signage, Tents)	\$418,359
Total*	\$3,909,787

*estimated as of October 15, 2021

Synopsis of Federal Relief Funding: Higher Education Emergency Relief Fund (HEERF)

Funding Source	Amount	Use	Distributed
HEERF I: CARES	\$3,622,358	Student Emergency Grants	Disbursed by 12/31/20
HEERF I: CARES	\$3,981,012	Institutional Use	Disbursed by 9/24/20
HEERF II: CRSSA	\$3,622,358	Student Emergency Grants	To be disbursed fully by 10/31/21 (99% disbursed)
HEERF II: CRSSA	\$9,809,421	Institutional Use	To be disbursed fully by 10/31/21
HEERF III: ARP	\$11,281,137	Student Emergency Grants	Distribution in process, to be fully disbursed by 10/31/21
HEERF III: ARP	\$12,120,324	Institutional Use	Methodology TBD

*current as of October 15, 2021

Oswego College Foundation

- Endowment is currently **over \$58.2 million** (historic high)
- Raised over \$8 million last fiscal year*
- OCF provided over \$3 million in support of students and campus
 - \$1.4m in student scholarship support
 - \$1.6m in support of campus programs and departments

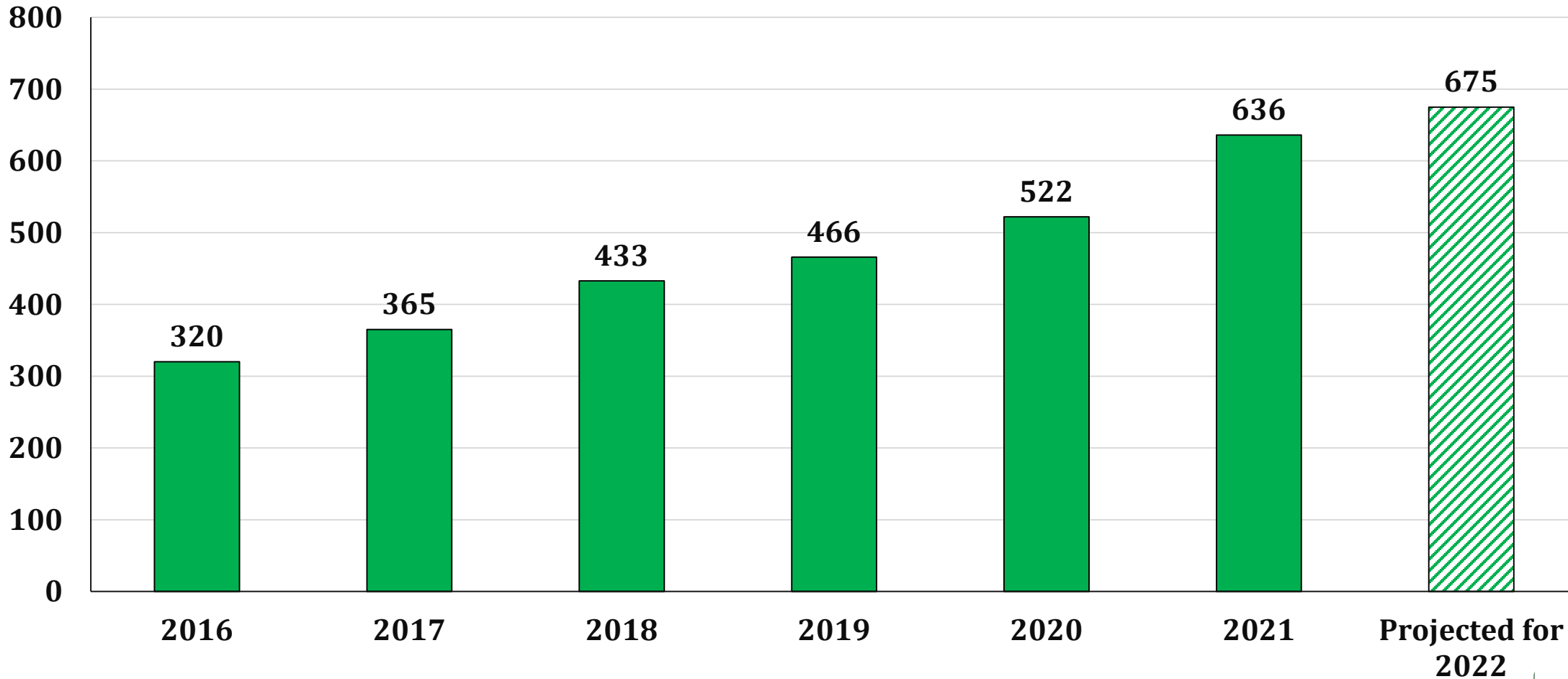


*current as of June 30, 2021

Oswego College Foundation, Inc.

Number of Donor Funded Student Scholarship Recipients

Years Ended June 30 *(with projection for 2022)*



Of the projected 2022 recipients, approximately 310 are merit based and 365 are need based



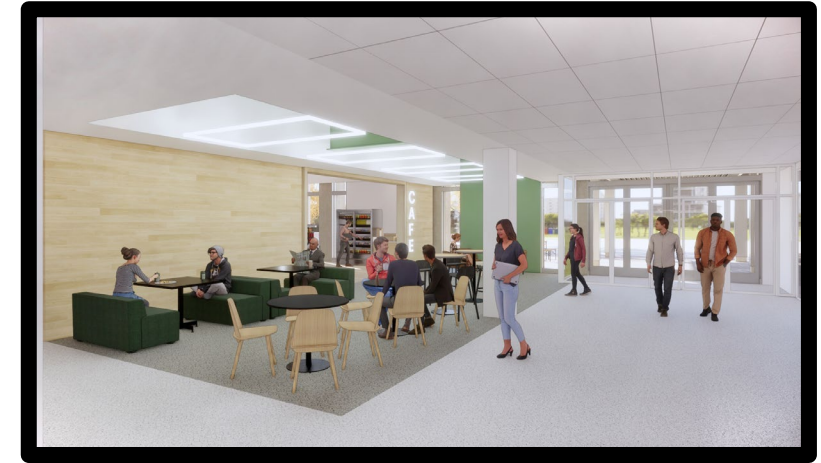
Capital Updates: In Construction

- Hewitt Hall Phase I- \$18m
- Sheldon Terracotta - \$14m
- Hart Hall Upgrades - \$1.3m
- Artville/Bookville Relocation - \$1.3m



Capital Updates: In Design

- Hewitt Hall Ph. II (pre-bid) - \$38m
- Hewitt Quad - \$5m
- Rudolph Road Steam Line - \$5m
- Critical Maintenance
 - Emergency Generators - \$2.5m
 - Roofs - \$2.1m
 - HVAC - \$1.4m

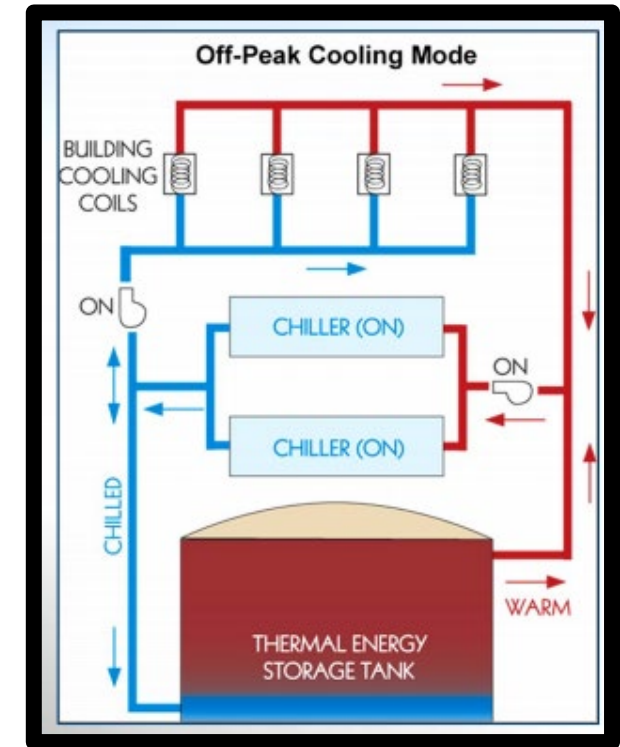
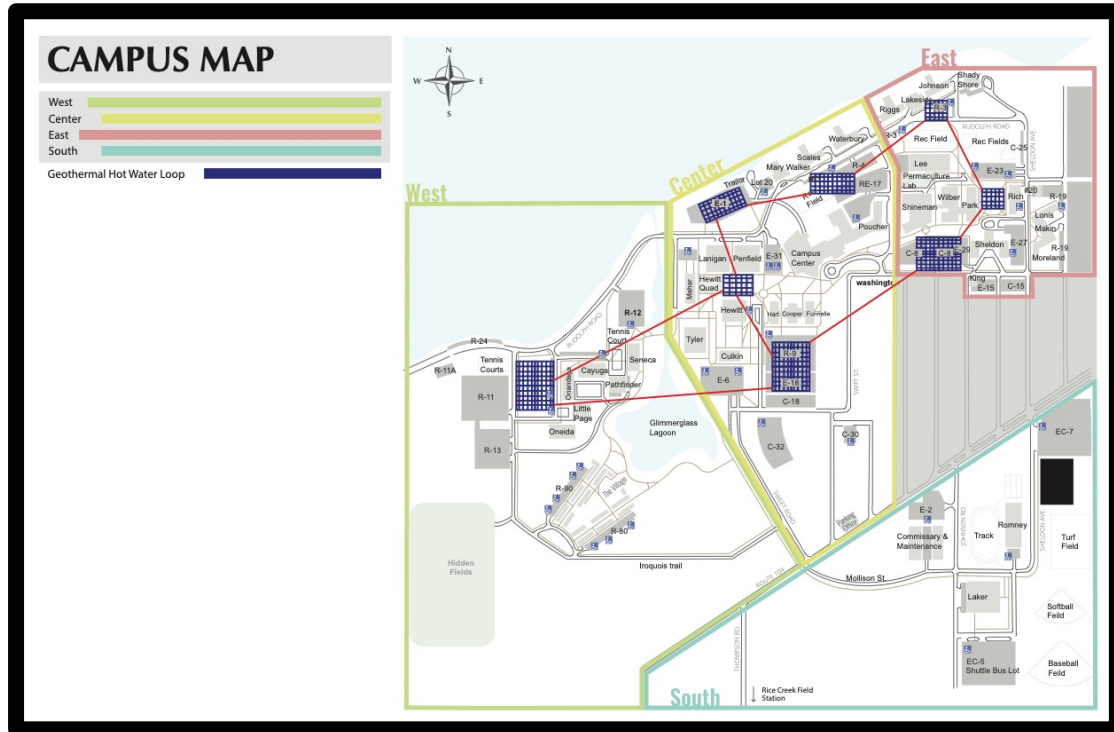


Capital Updates: Moonshot

Goal: Carbon Neutral Campus Energy

How: Build a Renewable Energy Microgrid and Geothermal Fields

- Generates electricity with local battery/power storage
- Interconnected with chilled/hot water loop
- Surplus thermal storage tanks



COVID-19 Testing and Vaccination

All employees and students are **required to test weekly** if unvaccinated or have not submitted vaccination record

COVID-19 Testing On Campus

- Aug. 12, 2020-Oct. 8, 2021: 93,234*
- Monday & Tuesday 10 am - 4 pm
- Wednesday & Thursday 8 am - 2 pm

COVID-19 Vaccination

- 100% of students compliant
- 77% of employees



*current as of October 15, 2021

COVID-19 Employee Vaccination Rates

Employee Group	Person Count	Vaccination Count	Percentage*
CSEA	334	237	71%
MC	39	37	95%
APSU	18	8	44%
UUP	867	691	80%
NYSCOBA	3	3	100%
PEF	6	3	50%
NON-STATE	206	154	75%
Total	1,475	1,134	77%

If unvaccinated, then you must get tested weekly—on campus or off campus (submit results to hr@oswego.edu).

Currently 378 employees are out of compliance with testing.

If you are not compliant with the testing requirement, then the disciplinary process begins.

[Upload proof of vaccination](#)

*current as of October 15, 2021



Middle States Self-Study Update

October 25, 2021

- MSCHE Team Chair Visit by President Daniel Wubah, Millersville University

March 6-9, 2022

- MSCHE Self Study Evaluation Team



Thank you!

