



# Observations from the Laboratorio Nacional de Astrofísica



Jillian Neeley, Brandon Gilfus, Alex James, Eamonn Moyer, Peter Thompson, Paulo Henrique da Silva, Antonio Kanaan and Shashi Kanbur

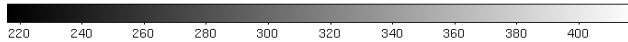


Figure 1: Open cluster M6

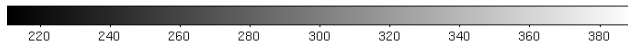
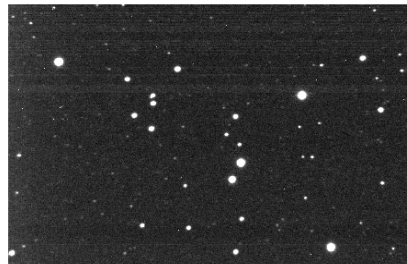


Figure 2: Open cluster M7

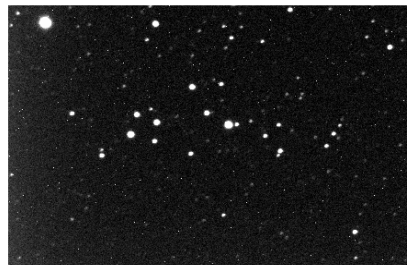


Figure 3: Open cluster NGC 5662

All of these images were taken using the Chimera Robotic Telescope Control System on the 40cm telescope at LNA.  
 Latitude: -22:32:04  
 Longitude: -45:34:57  
 Elevation: 1864 m

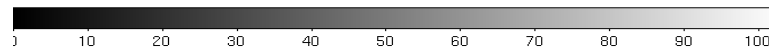
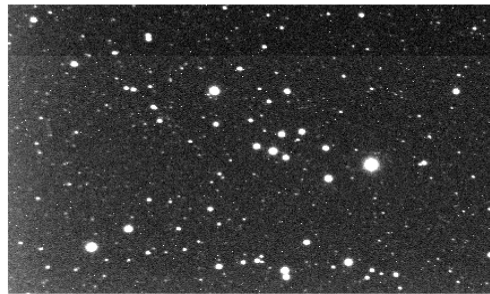


Figure 4: Open cluster M25

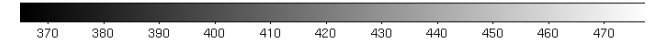
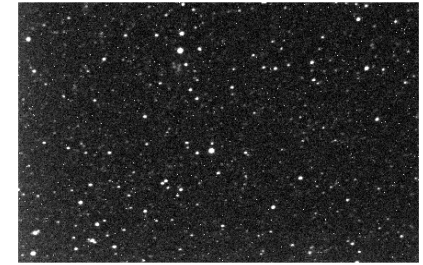


Figure 5: The Small Magellanic Cloud



Figure 6: Open cluster NGC6087

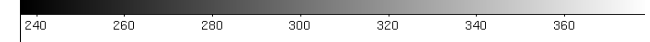


Figure 7: Open cluster NGC6649

### Acknowledgements

The authors thank NSF OISE award 0755646 and the 2006 Chretien award of the American Astronomical Society.