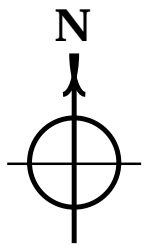


**MAP
NOT TO
SCALE!**



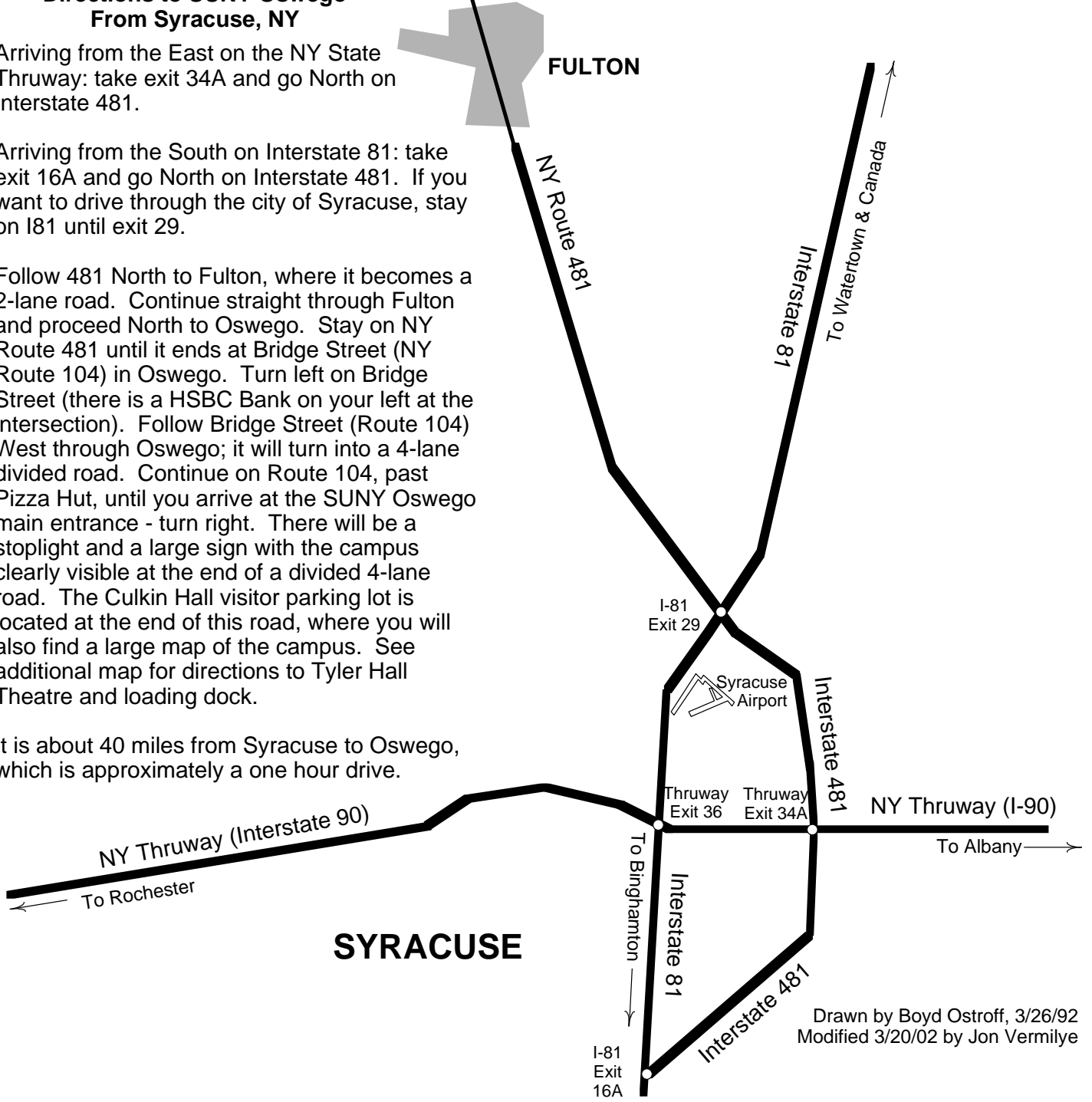
**Directions to SUNY Oswego
From Syracuse, NY**

Arriving from the East on the NY State Thruway: take exit 34A and go North on Interstate 481.

Arriving from the South on Interstate 81: take exit 16A and go North on Interstate 481. If you want to drive through the city of Syracuse, stay on I81 until exit 29.

Follow 481 North to Fulton, where it becomes a 2-lane road. Continue straight through Fulton and proceed North to Oswego. Stay on NY Route 481 until it ends at Bridge Street (NY Route 104) in Oswego. Turn left on Bridge Street (there is a HSBC Bank on your left at the intersection). Follow Bridge Street (Route 104) West through Oswego; it will turn into a 4-lane divided road. Continue on Route 104, past Pizza Hut, until you arrive at the SUNY Oswego main entrance - turn right. There will be a stoplight and a large sign with the campus clearly visible at the end of a divided 4-lane road. The Culkin Hall visitor parking lot is located at the end of this road, where you will also find a large map of the campus. See additional map for directions to Tyler Hall Theatre and loading dock.

It is about 40 miles from Syracuse to Oswego, which is approximately a one hour drive.



Drawn by Boyd Ostroff, 3/26/92
Modified 3/20/02 by Jon Vermilye