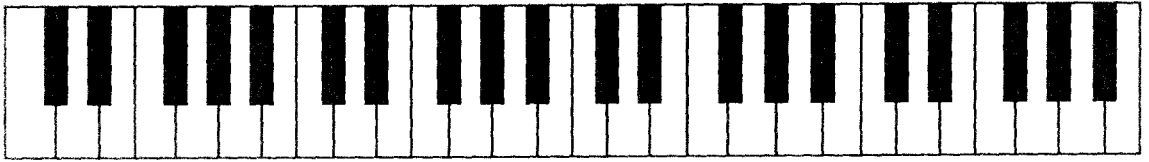
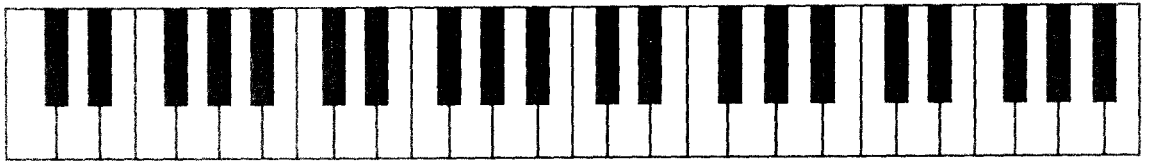


# The Basics of Reading Music

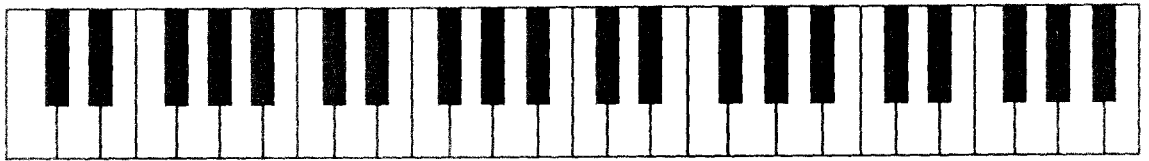
Write the letter C on all the appropriate keys of this piano diagram.



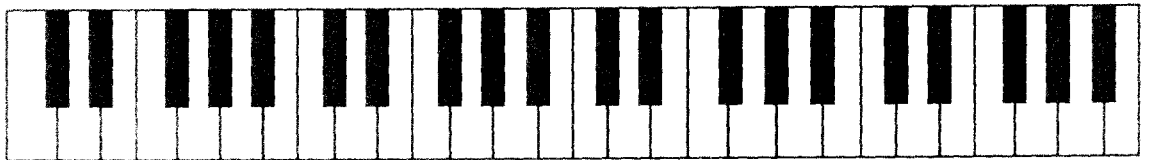
Write the letters A and D on all the appropriate keys of this piano diagram.



Write the letters B and F on all the appropriate keys of this piano diagram.



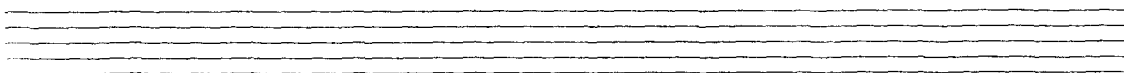
Write the letters E and G on all the appropriate keys of this piano diagram.



Add stems to these noteheads. Make sure that the stems are drawn in the correct direction.



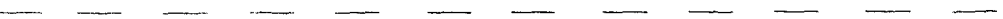
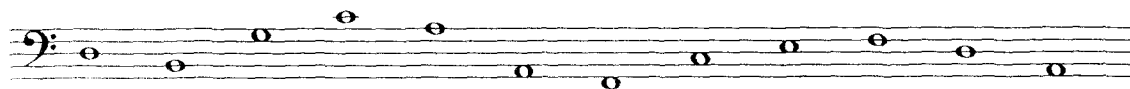
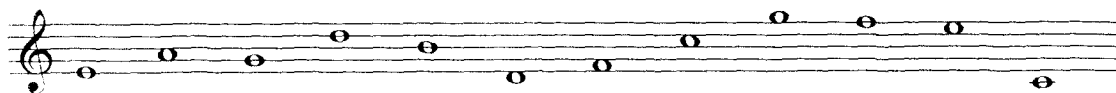
Practice drawing treble clefs on this staff.



Practice drawing bass clefs on this staff.



Name the following notes with letters of the musical alphabet.



A musical staff with a treble clef. It contains a sequence of 12 whole notes: C4, D4, E4, F4, G4, A4, B4, C5, B4, A4, G4, F4. Below the staff is a dashed line.

A musical staff with a bass clef. It contains a sequence of 12 whole notes: C3, D3, E3, F3, G3, A3, B3, C4, B3, A3, G3, F3. Below the staff is a dashed line.

A musical staff with a treble clef. It contains a sequence of 12 half notes: C4, D4, E4, F4, G4, A4, B4, C5, B4, A4, G4, F4. Below the staff is a dashed line.

A musical staff with a bass clef. It contains a sequence of 12 half notes: C3, D3, E3, F3, G3, A3, B3, C4, B3, A3, G3, F3. Below the staff is a dashed line.

A musical staff with a treble clef. It contains a sequence of 12 quarter notes: C4, D4, E4, F4, G4, A4, B4, C5, B4, A4, G4, F4. Below the staff is a dashed line.

A musical staff with a bass clef. It contains a sequence of 12 quarter notes: C3, D3, E3, F3, G3, A3, B3, C4, B3, A3, G3, F3. Below the staff is a dashed line.