

Is Graduate School in Your Future?



Timeline for applying to graduate school during senior year

Applying for

Fall Semester Spring Semester (not always available)	SEPT. OCT.	OCT. SEPT.	NOV. OCT.	DEC. NOV.
Gather Information on Graduate Programs	Collect Application Materials	Process Information & Secure Documents	Send in Applications & Follow Up	
<p>Information Sources Include:</p> <ul style="list-style-type: none"> • Faculty • Peers • Peterson's Guide to Graduate/Professional Study • DISCOVER - career guidance system • Reference Literature prepared by prof. field <p>Online Resources</p> <p>Begin asking for letters of recommendation</p> <p>Investigate national scholarships</p> <p>Pick up bulletin and register for required entrance test</p> <ul style="list-style-type: none"> • GRE, GMAT, LSAT (Career Services) • MCAT, DCAT (Biology Dept.) <p>Search for private sources of graduate School funding</p> <ul style="list-style-type: none"> • Danforth, Fulbright, Ford, Carnegie Mellon, etc. 	<p>Request from Schools:</p> <ul style="list-style-type: none"> • Application for admission • Application for financial aid • Graduate school catalog • Specific information regarding your chosen program which applying • Application for scholarships and fellowships 	<p>Process Data</p> <ul style="list-style-type: none"> • Begin to make initial decisions • Apply for appropriate graduate school admission test - GRE, LSAT, GMAT, etc. • Secure letters of recommendation & send thank you note to authors • Begin credential file in Career Services office if appropriate • Begin to create rough draft of general graduate school essays • Double check application deadlines and rolling admissions policies • Register for national application or data assembly service (for medical, dental, osteopathy, podiatry or law school) 	<p>Submit Applications</p> <ul style="list-style-type: none"> • Finalize your graduate/professional school choices • Send in all application materials <p><i>After you have applied:</i></p> <ul style="list-style-type: none"> • Verify your application file is complete • Visit institutions that accept you • Send a deposit to institution of choice • Notify other programs that accepted you so they can admit other students • Send thank you notes to persons who wrote you recommendations 	
<p>Note: These dates are extrapolated from the deadline (Feb. or Nov.) for receiving applications as most commonly stated by graduate schools. There are exceptions, but to be safe, consider Aug./Sept. as the latest possible date for starting search.</p>				
<p style="text-align: center;"><i>The vast majority of resources you need to conduct your research can be found in the Career Services Office, 142 Campus Center, or Penfield Library.</i></p>				
<div style="border: 1px solid black; padding: 5px; text-align: center;"> <p>Internet Resources</p> <p><i>Peterson's Guides to Graduate and Professional School:</i> www.petersons.com</p> <p><i>Graduate School Rankings:</i> www.usnews.com</p> <p><i>Admissions Testing Information:</i> www.ets.org</p> <p><i>Online Funding/Scholarship Search:</i> www.cashe.com</p> </div>				

Is Graduate School For You?

- Are you reasonably sure of your career goals, or is there a strong possibility that you could change your mind after a taste of the working world?
- Would related work experience help you clarify ambiguous career goals?
- How much will your job and salary prospects be enhanced by a graduate degree?
- Is an advanced degree a prerequisite to your chosen career?



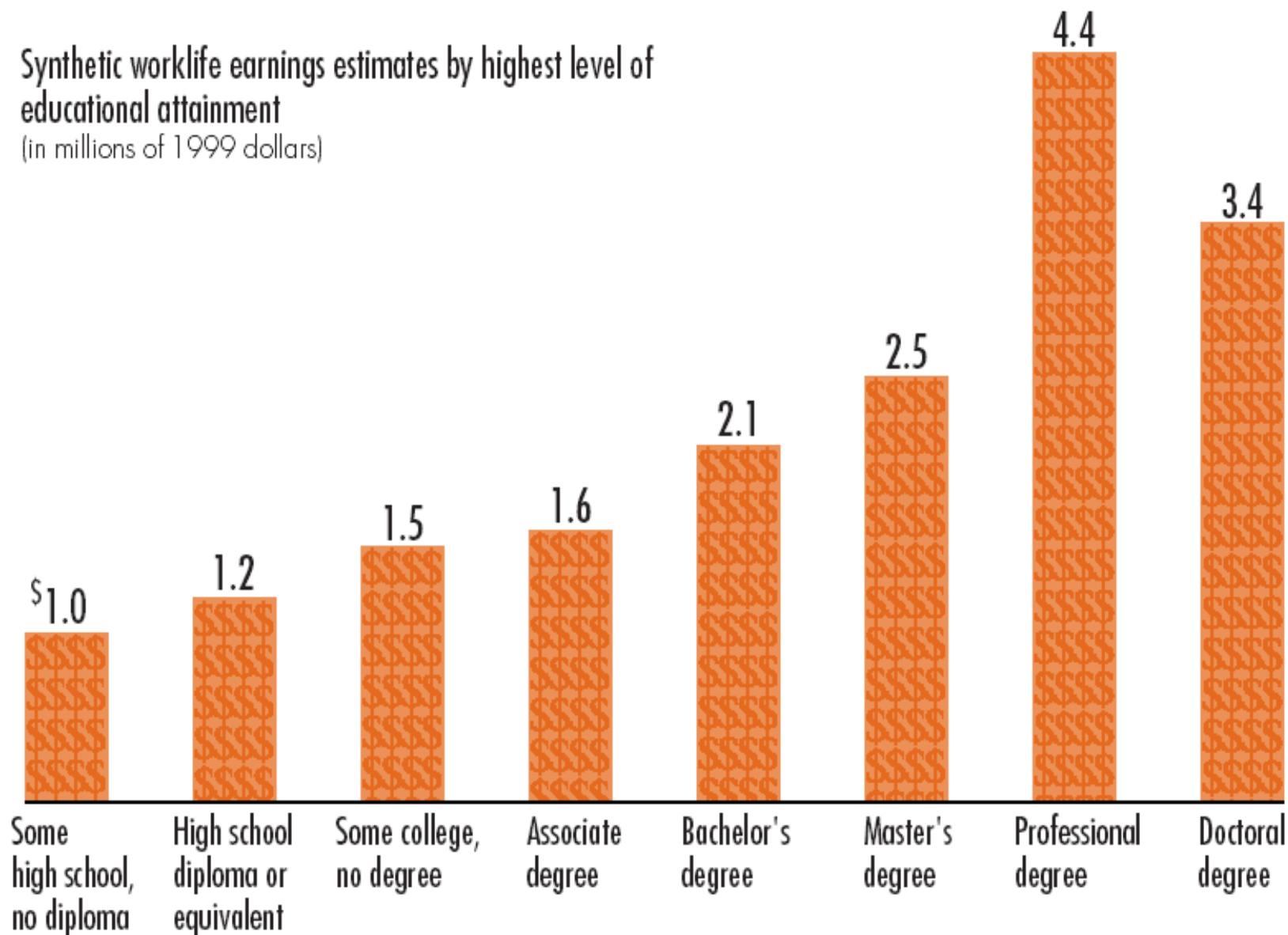
Is Graduate School For You?

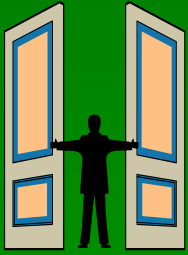
- What are the direct and indirect costs of graduate school?
- Is there a possibility that a future employer might pay for you to attend graduate school?
- Do you have a strong GPA? Would work experience enhance your application credentials by offsetting mediocre grades or test scores?
- Would you have difficulty readjusting to student life after a break?



Synthetic worklife earnings estimates by highest level of educational attainment

(in millions of 1999 dollars)





Choosing a School



Admission

Cost

Programs Offered

Physical Facilities

Program Structure

Geographic Location

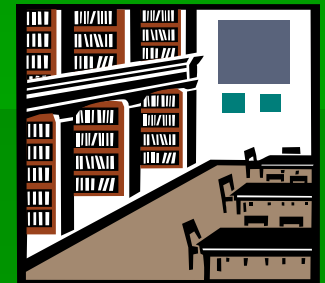
Faculty

Library

Reputation



Size



Diversity of Students

Searching For Graduate Schools

USING DISCOVER

Instructions

Each tab above represents a section of DISCOVER. Click a tab, then click a link on the bar below the tab.

To review the path you selected, click on "My Path" above.

Path for Robert Casper:

Find occupations that fit me

Your Steps:

Learn about self and occupations

- ✓ [Interest Inventory](#)
- [Abilities Inventory](#)
- [Values Inventory](#)

Use Results to

DISCOVER Home>>Introduction

Robert Casper

[▶ GET STARTED](#)



Welcome to DISCOVER!

- ◆ Use the "Get Started" button for help finding your way through DISCOVER.
- ◆ Use the tabs on the menu above if you know which section(s) you want to use.
- ◆ Use the "DISCOVER Tour" button below for a guided tour.

Instructions are on the left of every page.

[DISCOVER Tour](#)

[WWM Tour](#)

[Site Map](#)

[Site Search](#)

The Application Process

- Request Information
- Apply Early
- Complete Application Package



Application Form	Financial Aid
Personal Essay	Recommendations
Application Fees	Test Scores
Transcript & Grades	Personal Interview

Admissions Testing



Graduate Record Examinations (GRE)

Graduate Management Admission Test (GMAT)

Medical College Admission Test (MCAT)

Law School Admission Test (LSAT)

Other tests:

Miller Analogies Test

Dental Admission Test

Optometry Admission Test

Pharmacy College Admission Test

Veterinary Aptitude Test

Test of English as a Foreign Language

Test Preparation



- Review study questions in the test registration bulletin.
- Purchase a test preparation book from the test registration bulletin or your local bookstore i.e., Barron's Guides.
- Purchase interactive study software through the testing company or at your local software store.

Test Preparation



- Use the GRE or GMAT test prep software available in Career Services.
- Enroll in the Kaplan TestDrive. Program offered through Career Services

Test Drive Graduate Tests

Free - No Charge - No Kidding!

Practice taking Graduate School Entrance Exams - GRE-GMAT-LSAT-MCAT

Attend TESTDRIVE by Kaplan Educational

Monday, October 26, 2009

6 - 9 pm Lanigan 102A

(limited seating! Advance sign-up for this program is required)

"Testdrive," will provide you with an opportunity to take a practice GRE-GMAT-LSAT-MCAT under simulated conditions, and have it scored at the program....before you take the real thing!

To reserve a seat, call the COMPASS at: 312-3142 by 4 pm Thursday, October 22nd.

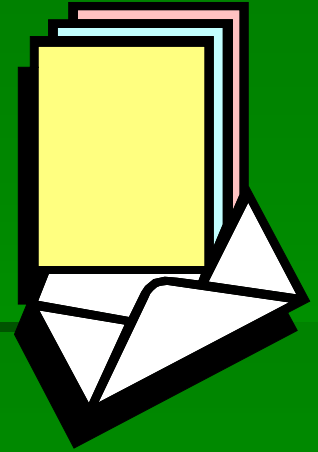
Recommendations

Guidelines to give you an edge



- Choose professors who know you well.
- Choose employers who can highlight work related skills.
- Determine who will be your best advocates.
- Discuss the content & expectations of the letter.
- Provide writer with a copy of your resume.

Recommendations



- Don't use references from friends, relatives, or people who do not know you well.
- Give your references all of the necessary forms, addresses and stamped envelopes.
- Give your references at least a month in which to write the reference and ask them to meet a deadline.

Application Essay



Points to keep in mind when writing your admission essay:

Make your aim clear, succinct & enthusiastic

- **Demonstrate focus & depth in your thinking**
- **Answer the question**
- **Write an interesting essay**

Application Essay

- Making an outline vs. writing spontaneously
- Have someone to critique your essay
- Keep your essay positive
- Type your essay
- Neatness, spelling and grammar are important



Application Essay

What the Admissions Committees are trying to evaluate:

- Writing ability
- Educational background
- Major areas of interest or study
- Reasons for graduate education
- Immediate and long-term goals
- Level of maturity
- Your unique contribution to the institution



FINANCIAL AID



- **FELLOWSHIPS:** granted by individual universities based on merit not need, usually cover tuition & expenses.
- **ASSISTANTSHIPS:** stipend and tuition waivers in exchange for services, teaching or research.
- **GRANTS:** sum of money awarded to a university or individual in exchange for work, research & scholarly publications.
- **LOANS:** Direct Stafford Subsidized Loans, Direct Stafford Unsubsidized Loans, Perkins Loans and State Loans

FINANCIAL AID



- **When to Apply:** after January 1 of the year in which you are applying for aid; the deadline is May 1st.
- **Free Application for Federal Student Assistance (FAFSA) :** standard form for federal loan.
- www.finaid.com - links to financial aid sites
- www.ed.gov/prog_info/SFA/StudentGuide - dept. of education
- www.fdncenter.org - clearinghouse on grants & foundations
- www.fastweb.com - searchable index of private scholarships, grants and loans
- **Federal Student Aid Information Center-** 800 433-3243